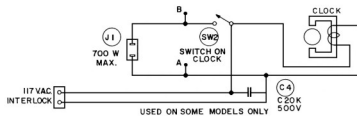


VIKING RM-515, RMK-516



STEP	ALIGNMENT		AND		SENSITIVITY		
	APPLY SIGNAL KC TO	THRU SERIES DUMMY	SET GANG	ADJUST FOR MAX	SIGNAL GEN MODULATED 30% 400 CYCLES	SENSITIVITY FOR 50mw.	SENSITIVITY FOR 100mv DIODE LOAD
1	455	12BA6 #1	.05	MIN. CAP	2nd I.F.	1200 μ V	1850 μ V
2	455	12BE6 #7	.05	MIN CAP	1st I.F.	48 μ V	72 μ V
3	1400	ANT.	RADIATED	1400	OSC. TRIM	—	—
4	1400	ANT.	RADIATED	1400	ANT TRIM	225 μ V/M	390 μ V/M
5	535	ANT.	RADIATED	MAX CAP	CHECK	—	—
6	600	ANT.	RADIATED	600	CHECK	350 μ V/M	570 μ V/M
7	1650	ANT.	RADIATED	1650	CHECK	—	—