

# SERVICE MANUAL

## VOX VT50



### TABLE OF CONTENTS

ASSEMBLY SKETCH : 2-3

SCHEMATIC DIAGRAM: 4-5

PARTS LIST: 6-7



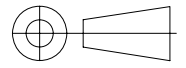
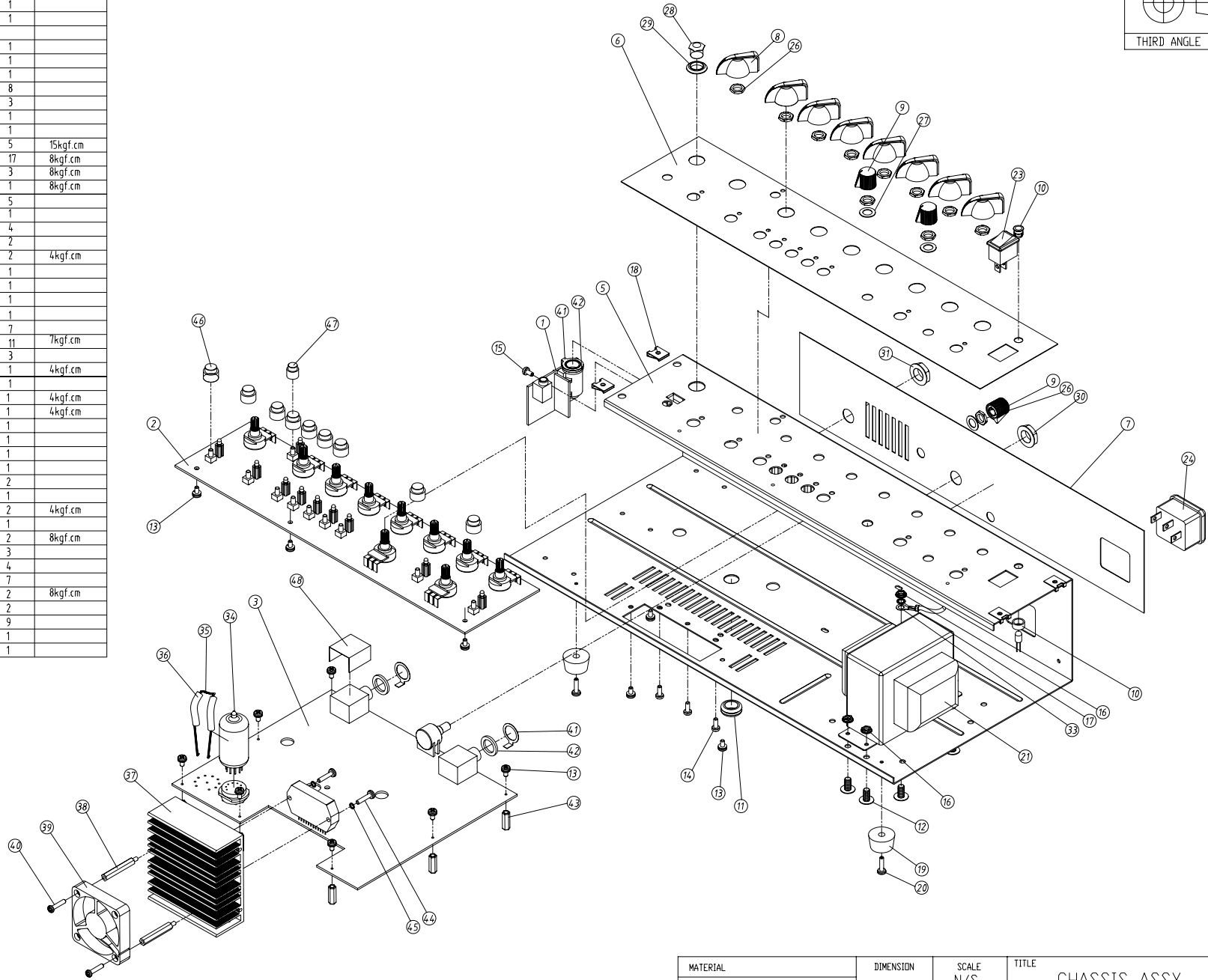
Issued: Mar.19, 2009

Ver.1.0

©2009 VOX AMPLIFICATION LTD.

DWG. NO. ASSY0261-01

NO	DESCRIPTION	SPECIFICATION	Q'TY	
1	JACK PCB ASSY	VT15/30/50	1	
2	MAIN PCB ASSY	VT50/100	1	
3	POWER PCB ASSY	VT50	1	
4				
5	MAIN CHASSIS	EG1 1f	1	
6	FRONT PANEL	PVC 0.3t HAIR LINE BK	1	
7	REAR PANEL	PS 0.3t	1	
8	VOLUME KNOB	ABS (CHIKEN HEAD) CLEAM	8	
9	ROUND KNOB	ABS BK	3	
10	LED BUSHING	φ5	1	
11	RUBBER BUSHING	φ12	1	
12	SCREW	MWS 4x10 NI	5	15kgf.cm
13	SCREW	MBSSW 3x6 NI	17	8kgf.cm
14	SCREW	TBQSSW 3x8 BK	3	8kgf.cm
15	SCREW	TPQS 3x6 Ni	1	8kgf.cm
16	FLANGE NUT	M4 NI	5	
17	TOOTH WASHER	φ4	1	
18	CHASSIS FIX	Ni	4	
19	RUBBER FOOT	SMALL - 11mm	2	
20	SCREW	TBQS 3x8 BK	2	4kgf.cm
21	TRANS		1	
22	FUSE		1	
23	POWER SWITCH	APS-1101HV0	1	
24	INLET/FUSE HOLDER	SC-8F-21 or HF-301RT2	1	
25	CABLE TIE		7	
26	VOLUME NUT	M7 Zn	11	7kgf.cm
27	VOLUME WASHER	φ7	3	
28	JACK NUT	M10 NI PLATING	1	4kgf.cm
29	JACK WASHER	PLASTIC BK	1	
30	JACK NUT	M11 PLASTIC BK	1	4kgf.cm
31	JACK NUT	M11 PLASTIC RED	1	4kgf.cm
32	20S/SLEEVE WIRE ASSY	φ3 NI	1	
33	20S/RING TERMINAL WIRE	M3 NI	1	
34	TUBE	12AX7EH	1	
35	TUBE RETAINER	SPRING SUS φ1	1	
36	PVC TUBE	φ5(OD)xφ3(IN)x25(L)	2	
37	HEAT SINK	AL EXTRUDING(80x30x80)	1	
38	PCB SUPPORT	BRASS 30mm NI F.M	2	4kgf.cm
39	DC FAN	KF0510SSL-01	1	
40	SCREW	MPS 3x14 BK	2	8kgf.cm
41	EARTH RING	Sn 12x17x0.3t	3	
42	JACK WASHER	φ12 FIBER	4	
43	PCB SUPPORT	BRASS 15mm	7	
44	SCREW	TPQS 3x14 BK	2	8kgf.cm
45	WASHER	φ3 BK	2	
46	TACT KNOB "A"	RUBBER φ9	9	
47	TACT KNOB "B"	RUBBER φ7	1	
48	AL FOIL	27x35x0.05t	1	



THIRD ANGLE PROJECTION

MATERIAL	DIMENSION	SCALE	TITLE	SHEET
THICKNESS	mm	N/S	CHASSIS ASSY	10F1
FINISH	MODEL	VT50	DWG. NO.	VER.
			ASSY0261-01	A
TOLERANCE UNLESS NOTE	DRAWN	DATE	 Kimanson Instruments CO., Ltd.	
DIMENSIONAL	H.J.KIM	2009.01.04		
HOLE CENTERS	CHECKED	DATE		
DIAMETERS	APPROVED	DATE		
ANGULAR				
REV. NO.	REV. DATE	DESCRIPTIONS OF REVISION		



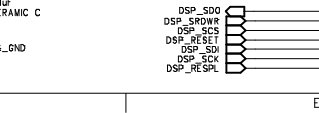
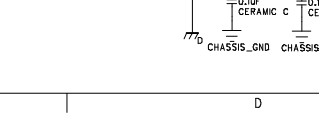
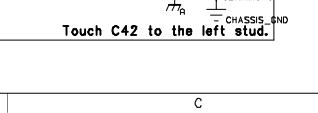
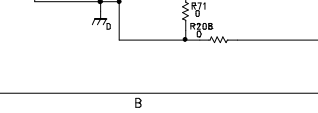
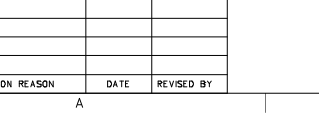
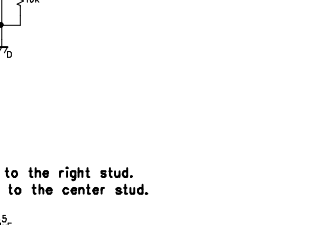
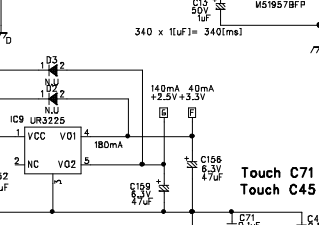
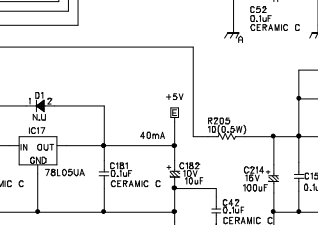
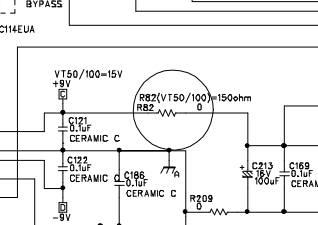
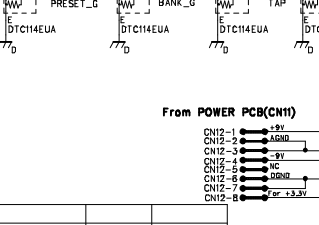
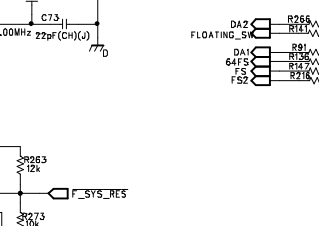
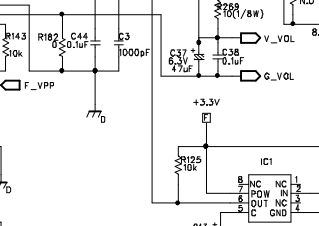
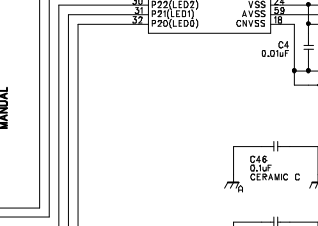
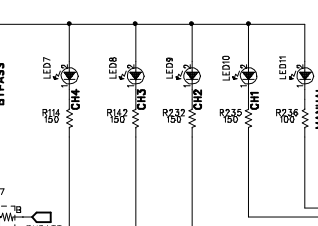
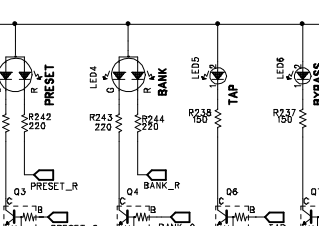
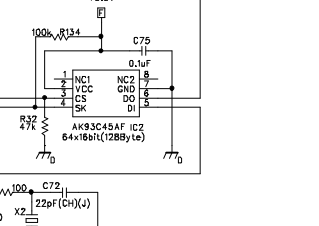
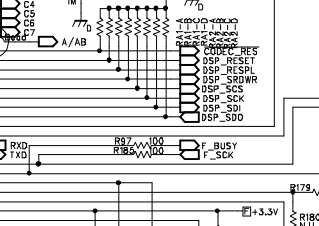
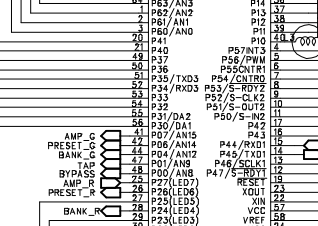
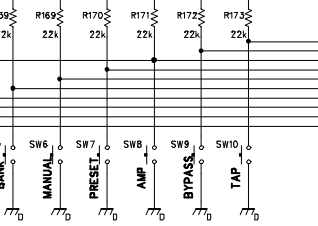
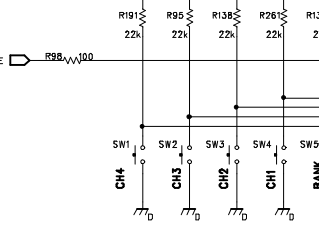
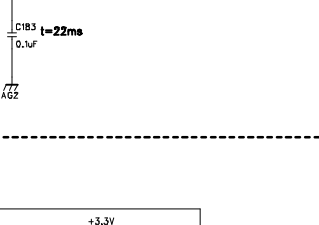
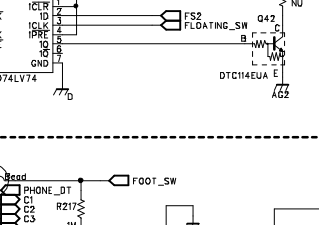
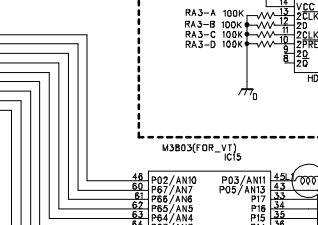
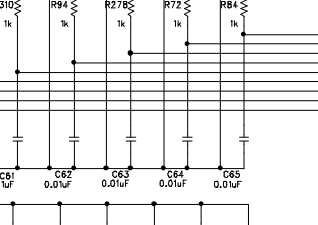
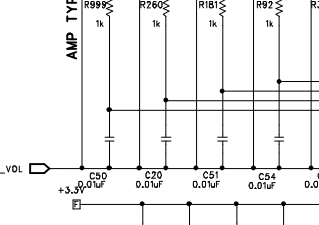
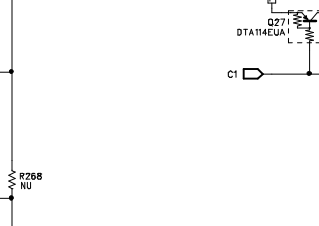
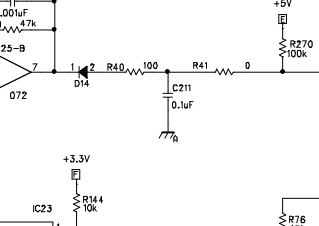
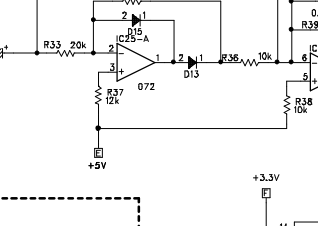
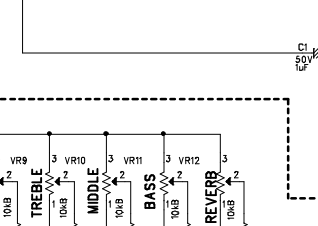
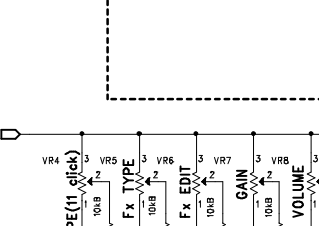
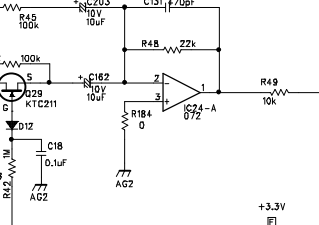
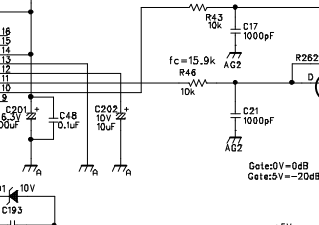
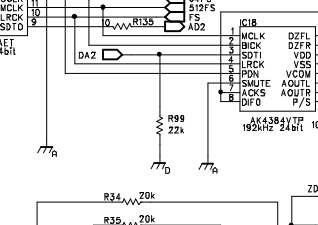
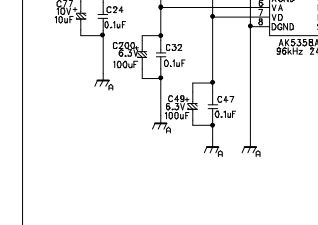
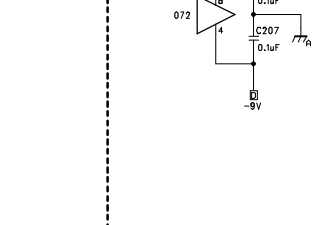
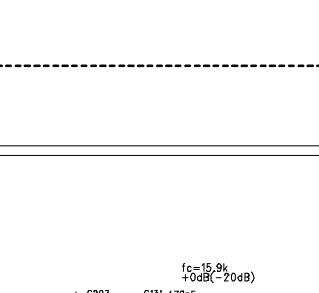
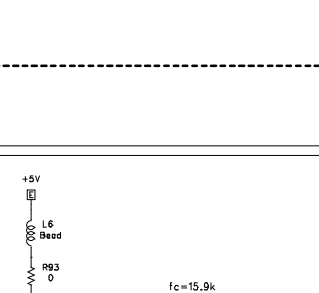
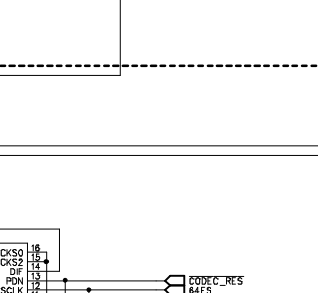
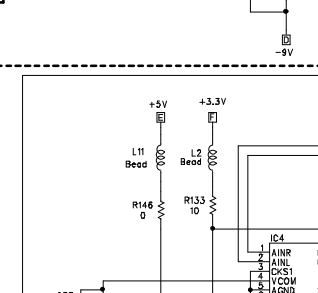
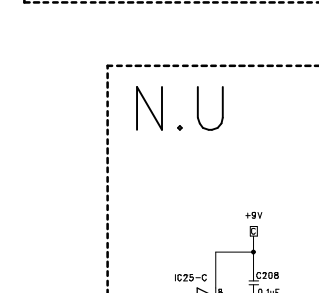
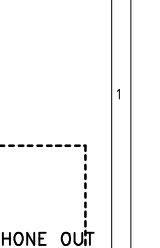
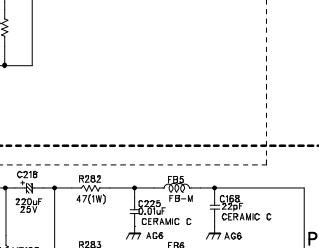
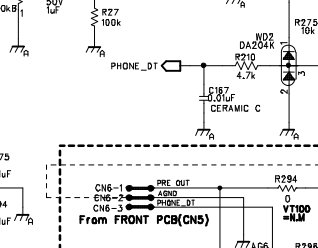
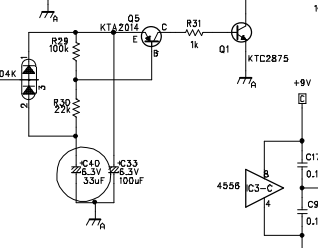
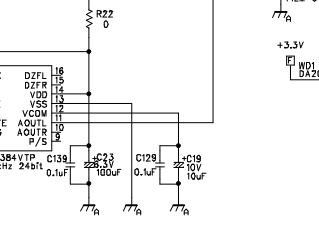
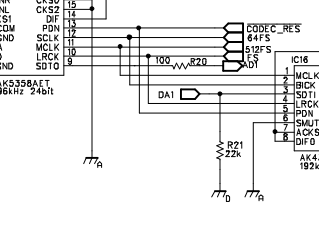
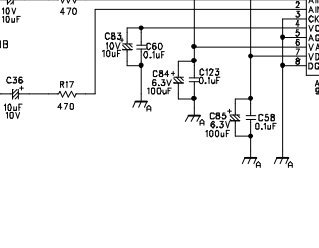
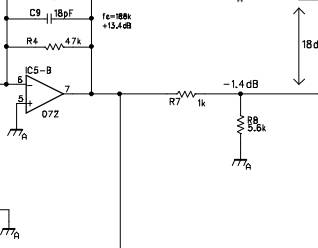
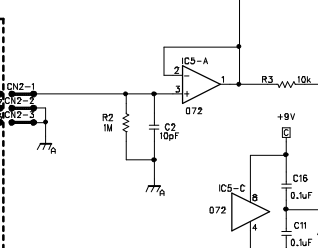
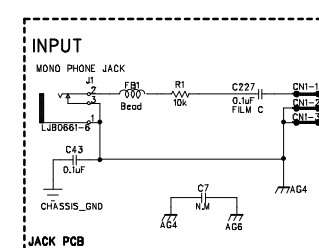


Table with 4 columns: MARK, REVISION REASON, DATE, REVISED BY.



## VOX VT50 Parts List

△ = SAFETY CRITICAL COMPONENT.

Component must be replaced only by the component specified in this list.

Part Number	Category	Part Name	Location	Reference	QTY
530000001086	CHIP INDUCTOR	HH-1M2012-121	JACK PCB	FB1,FB5,FB6	3
530000001256	HARNESS	SHIELD WIRE UL2547 3P 115MM	JACK PCB		2
530000001147	HARNESS	3P WIRE BOARD IN 100MM	JACK PCB		1
530000001100	PHONE JACK	BPJ-BNB-6.5(NUT/BLACK)	JACK PCB		1
530000001104	PHONE JACK	PJ3039 (3.5PIE)	JACK PCB		1
530000001094	OPAMP	NJM072 (SMT)	MAIN PCB	IC5	1
530000000813	OPAMP	NJM4556M	MAIN PCB	IC3	1
500324018020	DA CONVERTER	AK4384ET-E2	MAIN PCB	IC16	1
500320011255	CPU	M38039G8H-603HP U0	MAIN PCB	IC15	1
500320012334	DSP	MB87R1420PMC-G-BND	MAIN PCB	IC14	1
530000000183	SRAM	CS18LV02563AC-70	MAIN PCB	IC22	1
530000000189	RESET IC	KIA7125FV	MAIN PCB	IC1	1
500324018021	AD CONVERTER	AK5358AET-E2	MAIN PCB	IC11	1
530000000180	EEPROM	AK93C45AF	MAIN PCB	IC2	1
530000001095	3-INVERTOR	TC7WU04F	MAIN PCB	IC12	1
530000001096	DIGITAL TR	DTC114EUA	MAIN PCB	DT1,DT2,DT3,DT4,DT17	5
530000001097	REGULATOR	78L05UA	MAIN PCB	IC17	1
530000001098	REGULATOR	UTC UR3325	MAIN PCB	IC9	1
530000000271	CHIP TRANSISTOR	KTA2014	MAIN PCB	Q5	1
530000000275	CHIP TRANSISTOR	KTC2875	MAIN PCB	Q1	1
530000000159	DOUBLE DIODE	DA204K	MAIN PCB	WD1,WD2,WD3	3
530000000144	CHIP INDUCTOR	HH-1M2012-600	MAIN PCB	L21,L17,L20	3
530000001087	CRYSTAL	8.00MHZ	MAIN PCB	X2	1
530000001088	CRYSTAL	22.5792MHZ	MAIN PCB	X1	1
530000000288	VOLUME	VR RV160-40-15S-B10K-C0	MAIN PCB	VR3, VR6~VR12	8
530000000289	VOLUME	VR RV160-40-15S-B10K-C11 (11CLICK)	MAIN PCB	VR4, VR5	2
530000000265	TACT SWITCH	ATS-1230B (K=9.5MM)	MAIN PCB	SW1~SW10	10
530000000208	LED	LED RED 3M/M DLL-B5131Q	MAIN PCB	LED5~LED11	7
530000001102	LED	3RG9HW-2-A	MAIN PCB	LED2,LED3,LED4	3
530000000762	CONNECTOR	WAFER(GIL-S-3P-S2T2)	MAIN PCB	CN2,CN5	2
530000001148	HARNESS	△ 8P LEAD WIRE BOARD IN 230MM	MAIN PCB		1
530000001149	HARNESS	△ 5P LEAD WIRE BOARD IN 320MM	MAIN PCB		1
530000001225		LED SUPPORT SW 4010 - 10MM	MAIN PCB		7
530000001226		LED SUPPORT SW 4009 - 9MM	MAIN PCB		3
530000001124		TACT KNOB "A" NBR 9PIE	MAIN PCB		9
530000001125		TACT KNOB "B" NBR 7PIE	MAIN PCB		1
530000001211	POWER IC	STK404-100SC-E	POWER PCB	IC1	1
530000001091	OP-AMP	NJM072D (DIP)	POWER PCB	IC6,IC20	2
530000001212	REGULATOR	MC7915	POWER PCB	IC8	1
530000001213	REGULATOR	MC7815	POWER PCB	IC19	1
530000001103	LED	3O4HD-7	POWER PCB	LED2	1
530000000290	VOLUME	RV162-20-15SP-B100K	POWER PCB	VR13	1
530000000137		BEAD CORE SAT2550L	POWER PCB	L3,L2,FB1,FB2	4
530000000804		BRIDGE DIODE KBU4K	POWER PCB	D6	1
530000000142	BRIDGE DIODE	W04M	POWER PCB	D7	1
530000000150	DIODE	1N4002	POWER PCB	D10,D11,D25,D26,D2,D8,D9	7
530000000151	DIODE	1N4148	POWER PCB	D5,D1	2
530000001203	ZENER DIODE	1N5243B,T	POWER PCB	D14	1
530000001205	ZENER DIODE	1N4733B,T	POWER PCB	D4	1
530000000277	TRANSISTOR	KTC3198-GR	POWER PCB	Q7,Q8,Q9,Q11,Q16,Q21,Q22,Q17	8
530000000268	TRANSISTOR	KTA1266GR	POWER PCB	Q10,Q14,Q23	3
530000000273	TRANSISTOR	KTC2874	POWER PCB	Q13	1
530000001228	TRANSISTOR	KTC3200GR,T	POWER PCB	Q24	1
530000000838	CONNECTOR	MOLEX 5051 2P WAFER	POWER PCB	CN2	1
530000001116	CONNECTOR	WAFER LWL0640 3P	POWER PCB	CN8	1
530000001115	CONNECTOR	WAFER LWL0640 5P	POWER PCB	CN10	1
530000000764	CONNECTOR	WAFER LWL0640 8P	POWER PCB	CN11	1
530000000797	STEREO JACK	EPJ-BBB-P 8mm	POWER PCB	J4	1
530000000796	PHONE JACK	EPJ-BNB-P(8) MONO	POWER PCB	J1	1
530000001101	TUBE SOCKET	GZC9-A	POWER PCB	V2	1
530000001237		△ HEAT SINK 80X30X80 VT50	POWER PCB	HSK1064	1
530000001117		TUBE RETAINER SPRING SUS 1.0 PIE	POWER PCB		1
530000000782		EARTH RING TERMINAL	POWER PCB		2
530000000781		PCB SUPPORT 15MM	POWER PCB		7
530000000882		SUPPORT 30MM	POWER PCB		2
530000001207	DC FAN	△ KF0510S5L-01	POWER PCB		1
530000001143	PCB ASS'Y	JACK PCB ASSY VT15/30			(1)

Part Number	Category	Part Name	Location	Reference	QTY
530000001254		MAIN PCB ASSY VT50/100			(1)
530000001252		POWER PCB ASSY VT50			(1)
530000001233		△ MAIN CHASSIS VT50/100	CHASSIS		1
530000001238		FRONT PANEL	CHASSIS		1
530000001240		△ REAR PANEL VT50(100V)	CHASSIS		(1)
530000001241		△ REAR PANEL VT50(120V)	CHASSIS		(1)
530000001242		△ REAR PANEL VT50(230V)	CHASSIS		(1)
530000001243		△ REAR PANEL VT50(240V)	CHASSIS		(1)
530000001126		VOLUME KNOB ABS (CHIKEN HEAD) CLEAM	CHASSIS		8
530000001127		ROUND KNOB ABS - VT200	CHASSIS		3
530000000206		LED BUSHING	CHASSIS		1
530000000839		RUBBER BUSHING PAI12	CHASSIS		1
530000001215	POWERTRANS	△ TRANS 100V = 076-VT50J	CHASSIS		(1)
530000001216	POWERTRANS	△ TRANS 120V = 076-VT50U	CHASSIS		(1)
530000001217	POWERTRANS	△ TRANS 220-230V = 076-VT50E	CHASSIS		(1)
530000001218	POWERTRANS	△ TRANS 240V = 076-VT50EF	CHASSIS		(1)
530000000170	FUSE	△ T1.6AL 250V	CHASSIS	100V,120V	(1)
530000000169	FUSE	△ T800mA L 250V	CHASSIS	230V,240V	(1)
530000000832	POWER SWITCH	△ APS-1101HV0(RL3-111)	CHASSIS		1
530000000199	INLET/FUSE HOLDER	△ SC-8F-21	CHASSIS		1
530000000282	TUBE	12AX7EH	CHASSIS		1
530000001259		CHASSIS ASS'Y(100V)			(1)
530000001260		CHASSIS ASS'Y(120V)			(1)
530000001261		CHASSIS ASS'Y(230V)			(1)
530000001262		CHASSIS ASS'Y(240V)			(1)
530000001224	SPEAKER	TSL300G0505			1
530000001267		△ CABINET ASS'Y VT50			1
530000000313		△ HANDLE ASS'Y			1
530000000138		VOX (LARGE) SILVER		BRAND MARK	1
530000000160		VALVETRONICS SILVER		EMBLEM	1
530000001234		SPEAKER GRILL VT50			1
530000000283		Vent Grill ABS			3
530000000252		RUBBER FOOT SBR SMALL			4
530000000146		CORNER NYLON 6/6 COR0012-A			8
530000000254		SCREW CAP ABS			10
530000000875		RUBBER SPONGE 150X5X2T			2
530000000878		RUBBER SPONGE 70X10X2T			3
500600006508	AC CORD	△ 100V = LY100JPVCTFLY35LY37			(1)
530000000123	AC CORD	△ 120V = KKP30-16A			(1)
530000000124	AC CORD	△ 230V = KKP4819R-16A		GE	(1)
530000000125	AC CORD	△ 230V = KKP650-16A		UK	(1)
530000000126	AC CORD	△ 240V = KKP550-16A			(1)
500540028903	ADAPTER PLUG	△ YL-212		100JP	(1)