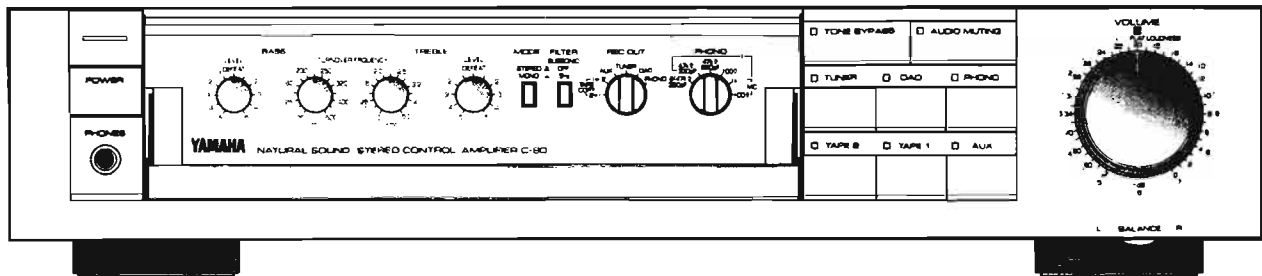


STEREO CONTROL AMPLIFIER C-60

SERVICE MANUAL

FRONT PANEL



CAUTION:

The bus bar used in the PC board for this unit serves not only as a ground, but also for +B and -B power sources. Please take care when taking readings.

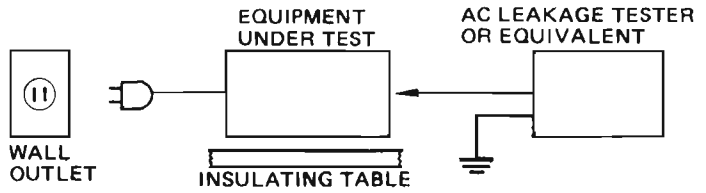
CONTENTS

TO SERVICE PERSONNEL	1
REAR PANEL	1
BLOCK DIAGRAM	2
SPECIFICATIONS	2
INTERNAL VIEW	3
DISASSEMBLY PROCEDURES	3
ADJUSTMENTS	4
SCHEMATIC DIAGRAM	5~9
PRINTED CIRCUIT BOARD	10
WIRING	11
PARTS LIST	12



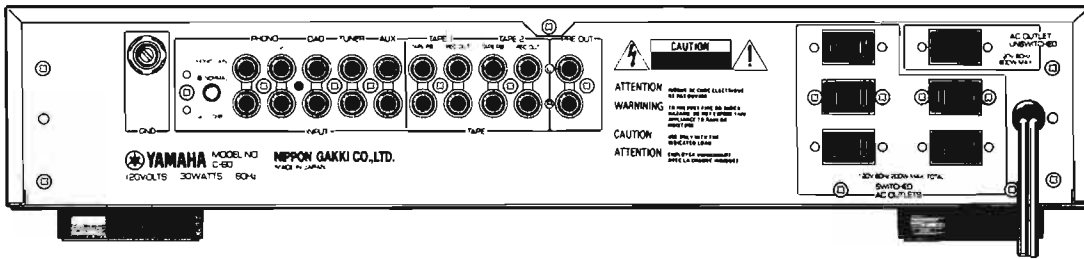
■ TO SERVICE PERSONNEL

- Critical Components Information.**
Components having special characteristics are marked Δ and must be replaced with parts having specifications equal to those originally installed.
- Leakage Current Measurement (For 120V Model Only).**
When service has been completed, it is imperative that you verify that all exposed conductive surfaces are properly insulated from supply circuits.
 - Meter impedance should be equivalent to 1500 ohm shunted by 0.15 μ F.
 - Leakage current must not exceed 0.5mA.
 - Be sure to test for leakage with the AC plug in both polarities.

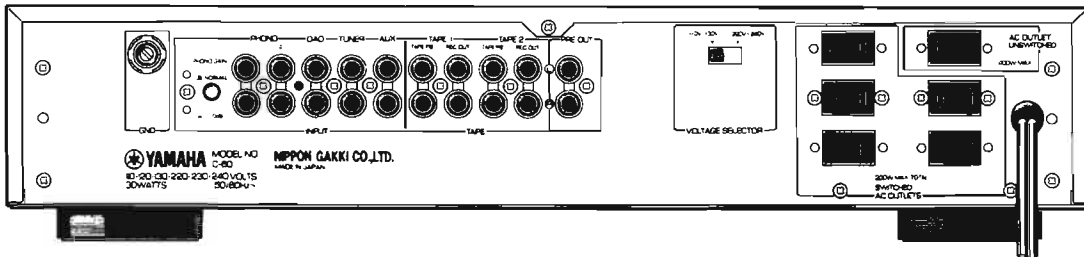


■ REAR PANEL

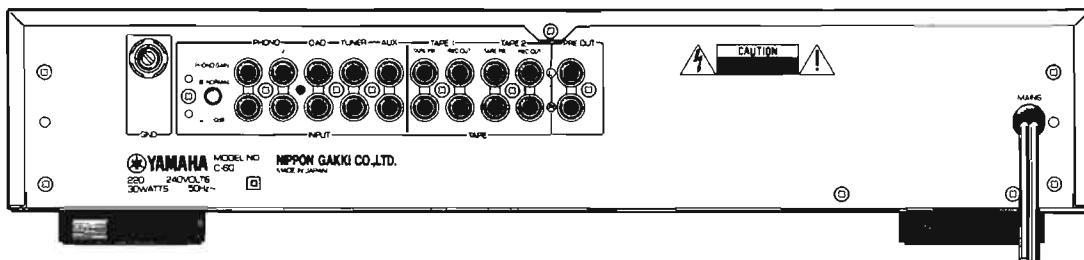
▼ U.S.A. & Canadian model



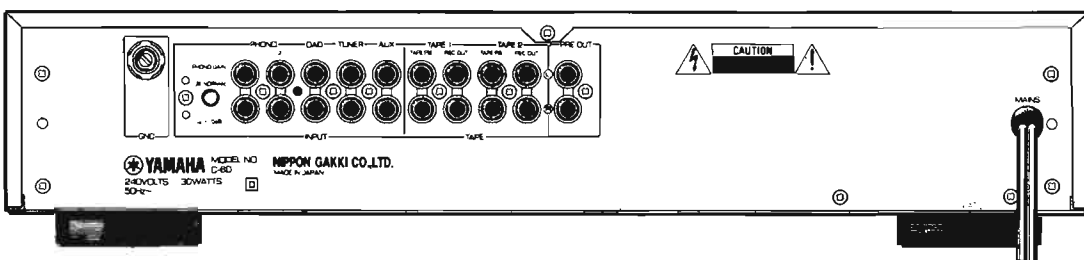
▼ General model



▼ European model

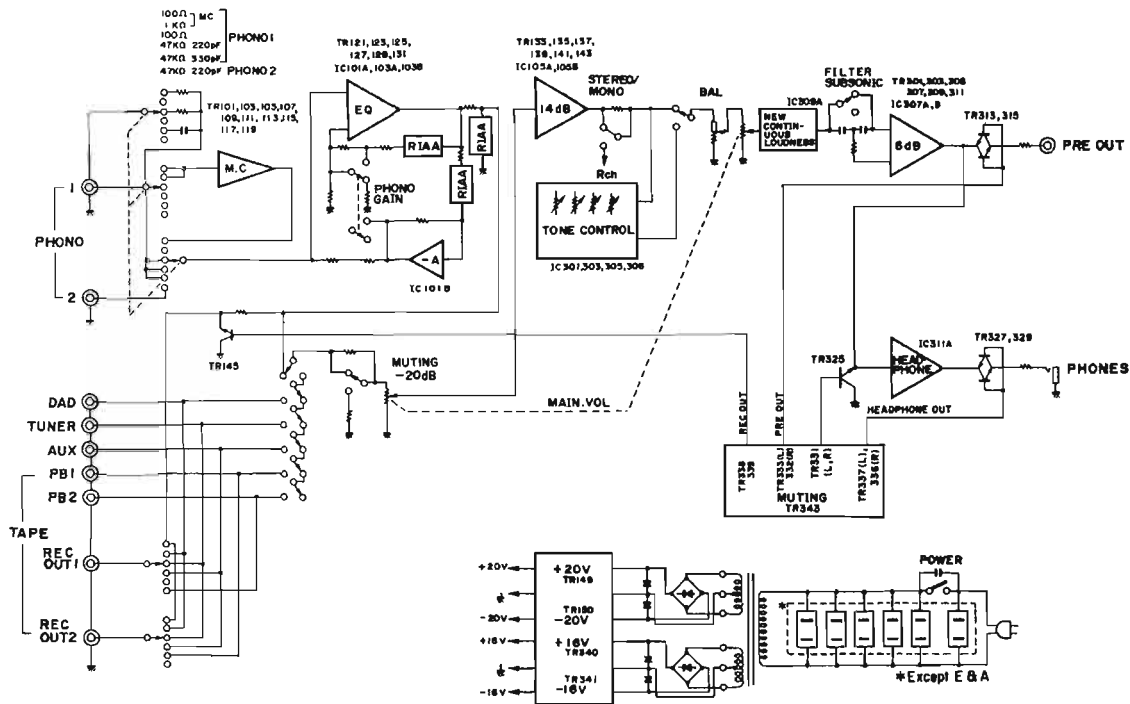


▼ Australian model



C-60

BLOCK DIAGRAM



SPECIFICATIONS

Input Sensitivity/Impedance

Phono 1 MC	100 μ V/100 Ω , 1k Ω
MM	2.5mV/100 Ω , 47k Ω
Phono 2 MM	2.5mV/47k Ω (220P)
DAD, Aux, Tape, Tuner	150mV/47k Ω

Input Sensitivity (New IHF)

Phono MC	33 μ V
MM	0.83mV
DAD, Aux, Tape, Tuner	50mV

Maximum-Input Signal (1kHz, 0.01% THD)

Phono MC	20mV
MM	500mV

Output Level/Impedance

Rec Out	150mV/600 Ω
Pre Out	1.5V/47 Ω

Maximum Voltage Output

20Hz ~ 20kHz 1% THD	20mV
Pre Out	8.5V

Headphone Jack Rated Output/Impedance

0.01% THD 1kHz	6V/100 Ω
----------------	-----------------

Frequency Response (Tone Bypass ON)

DAD Aux, Tape, Tuner 20Hz ~ 20kHz	+0 dB
	-0.2

RIAA Equalization Deviation

Phono MC/MM 20Hz ~ 20kHz	\pm 0.2dB
Phono MC/MM 10Hz ~ 100kHz	\pm 0.5dB

Total Harmonic Distortion

Phono MC to Rec Out 3V	0.002%
Phono MM to Rec Out 3V	0.001%
DAD, Aux, Tape, Tuner to Pre Out 3V	0.001%

Intermodulation Distortion (Tone Bypass ON)

DAD, Aux, Tape, Tuner 5V output	0.002%
---------------------------------	--------

Signal to Noise Ratio (IHF-A-Network)

Phono MC (500 μ V Input Shorted)	90dB
Phono MM (5mV Input Shorted)	95dB
DAD, Aux, Tape, Tuner (Tone Bypass ON, 150mV Input Shorted)	106dB

Signal to Noise Ratio (New IHF)

Phono MC	80dB
MM	83dB
DAD, Aux, Tape, Tuner	103dB

Residual Noise (IHF-A-Network)

1.5 μ V

Channel Separation

Phono MM (Input Short)	40Hz	85dB
	1kHz	80dB
	10kHz	70dB
Aux, Tape (5.1k Ω)	40Hz	85dB
	1kHz	70dB
	10kHz	60dB

Tone Control Characteristics

BASS boost/cut	\pm 10dB
turnover frequency	100Hz ~ 500Hz
TREBLE boost/cut	\pm 10dB
turnover frequency	1kHz ~ 5kHz

Filter Characteristics

Subsonic	15Hz, -12dB/oct
----------	-----------------

Continuous Loudness Control (Level-related equalization)

Attenuation	40dB (1kHz)
-------------	-------------

Audio Muting

Gain Tracking Error (0 ~ -60dB)	-20dB
---------------------------------	-------

Power Supply

U.S.A. & Canadian models	120V AC, 60Hz
General model	110 ~ 130V AC/220 ~ 240V AC

50/60Hz

European model 220 ~ 240V AC, 50Hz

Australian model 240V AC, 50Hz

Power Consumption

30W

AC Outlet (U.S.A., Canadian and General models)

Switched x 5	200W max.
Unswitched x 1	800W max. (U, C)
	400W max. (R)

Dimensions (W x H x D)

435 x 95 x 380 mm

(17-1/8" x 3-3/4" x 14-15/16")

Weight

6.8kg (14 lbs. 15oz.)

Specifications subject to change without notice.

(U) U.S.A. model

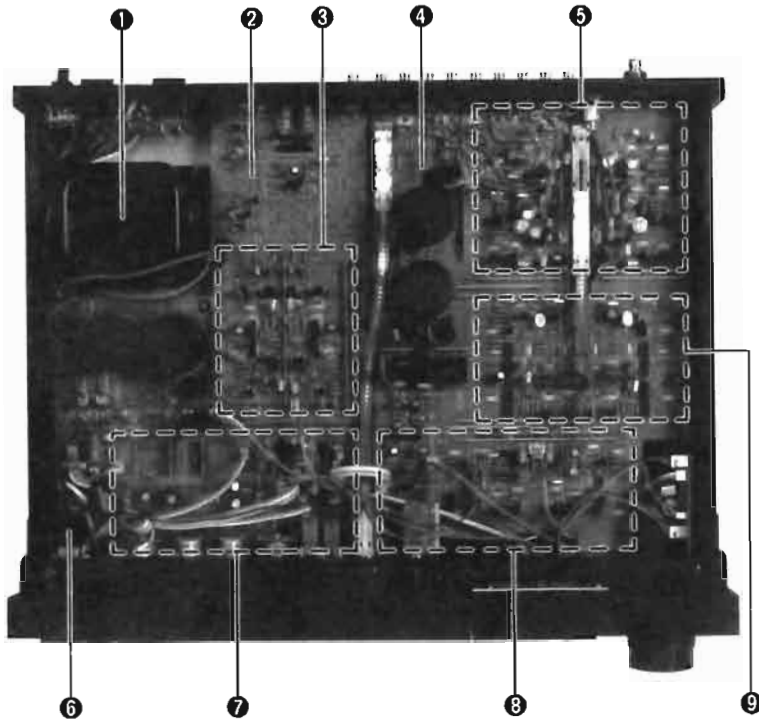
(C) Canadian model

(A) Australian model

(E) European model

(R) General model

INTERNAL VIEW



- ① POWER TRANSFORMER
General Model: GA67540
U.S.A. & Canadian models: GA67550
Australian & European models: GA67880
- ② TONE CONTROL CIRCUIT BOARD
- ③ 6dB FLAT AMP SECTION
- ④ EQUALIZER CIRCUIT BOARD
- ⑤ MC AMP SECTION
- ⑥ POWER SWITCH
- ⑦ TONE CONTROL SECTION
- ⑧ 14dB FLAT AMP SECTION
- ⑨ EQ AMP SECTION

DISASSEMBLY PROCEDURES

(Remove parts in order to disassemble as numbered)

1. Removal of Top Cover

- a. Remove 5 screws (①) in Fig. 1.

2. Removal of Bottom Cover

- a. Remove 8 screws (②) in Fig. 1.

3. Removal of Panel Unit

- a. Remove the knobs.

NOTE: Remove the VOL. and LOUD. knobs by hexagon wrench 2mm or 5/64".

- b. Remove 8 screws (③) in Fig. 1.

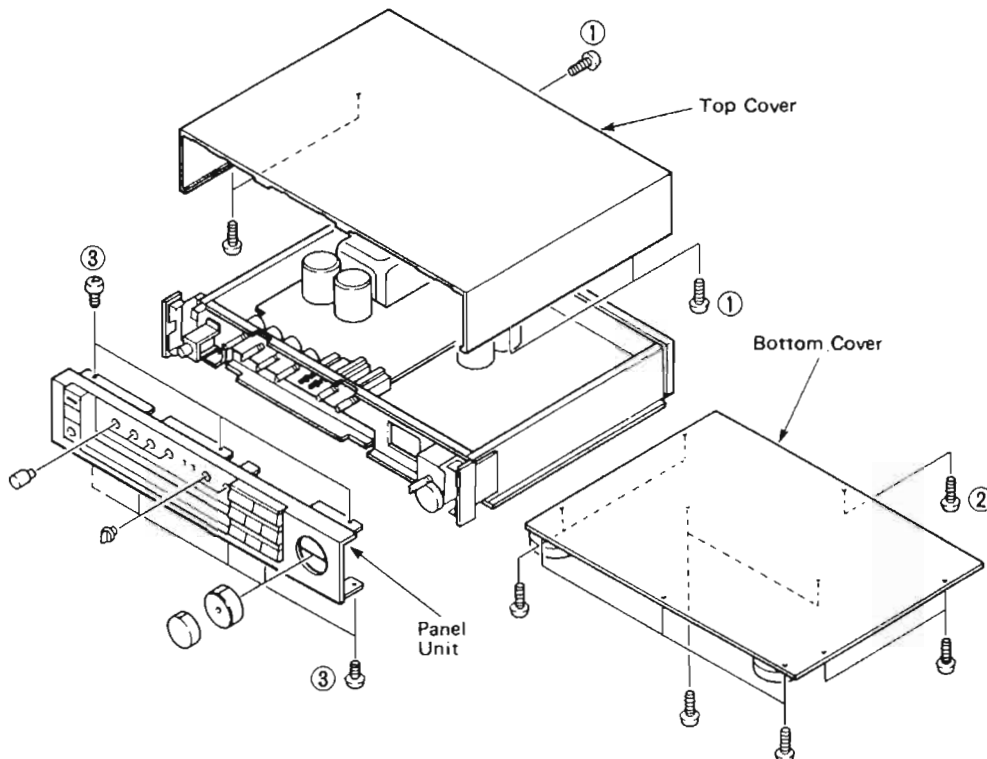


Fig. 1

ADJUSTMENTS

BEFORE COMMENCING

1. Make sure that primary supply voltage comes within *120V AC \pm 10% (U, C models).
2. Proceed with the adjustments about 5 minutes after the power has been turned on to stabilize the operation of the amplifier.

* E model 220V AC.
A model 240V AC.

- Set the controls to the following positions.

PHONO \rightarrow MC
REC OUT \rightarrow PHONO

Adjustment item	Test point	Instrument required	Adjustment points	Rating
MC AMP DC offset	REC OUT	DCVM	VR101 (Lch) VR102 (Rch) [EQUALIZER]	0V \pm 100mV

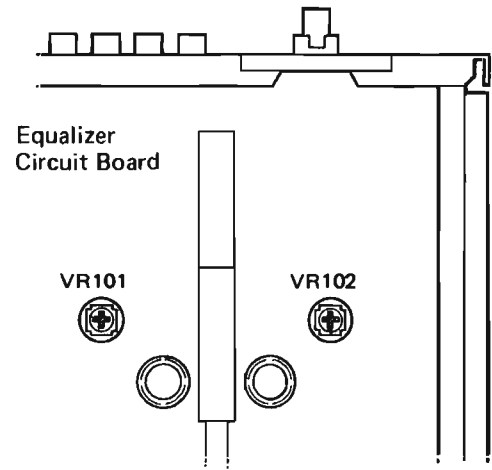
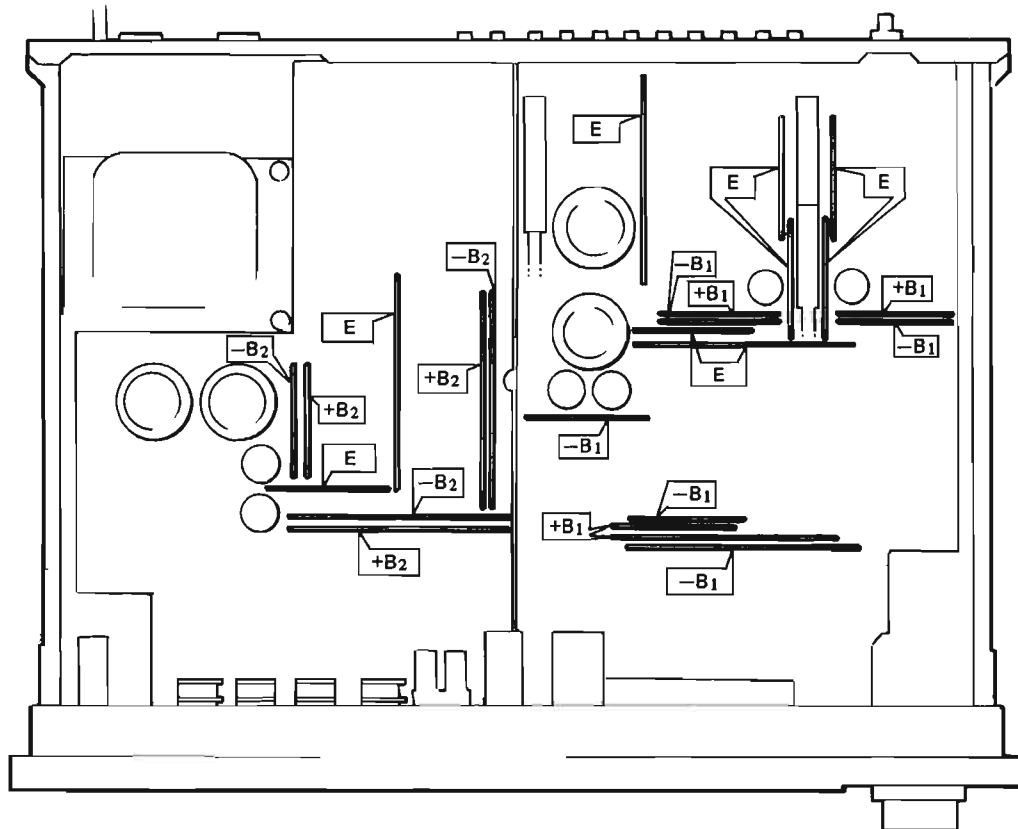


Fig. 2

CAUTION:

The bus bar used in the PC board for this unit serves not only as a ground, but also for +B and -B power sources. Please take care when taking readings.

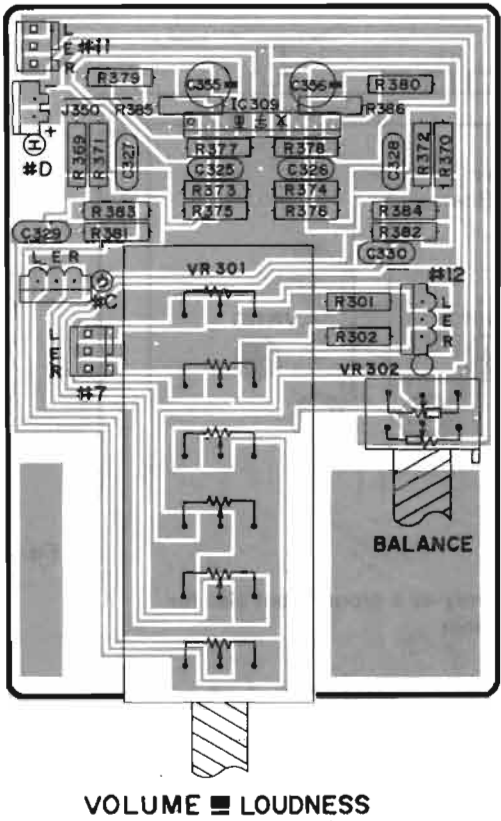


+B ₁	+20V \pm 1V
-B ₁	-20V \pm 1V
+B ₂	+16V \pm 1V
-B ₂	-16V \pm 1V
E	GND

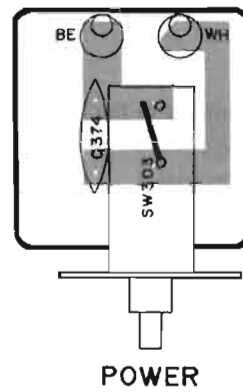
Fig. 3

PRINTED CIRCUIT BOARD (Pattern side)

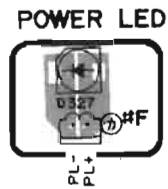
- Tone Control Circuit Board (2)



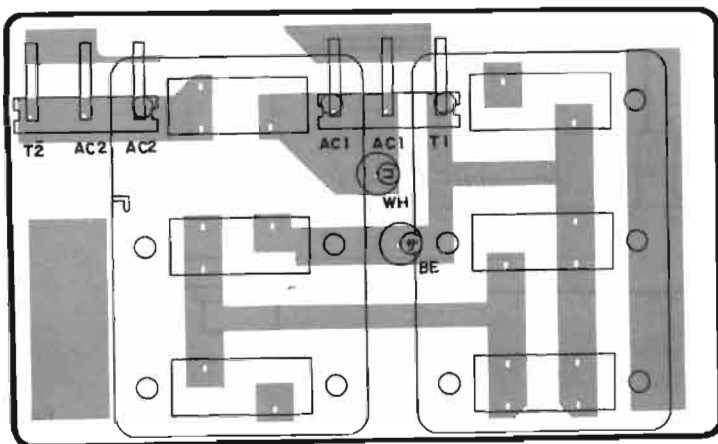
- Tone Control Circuit Board (5)



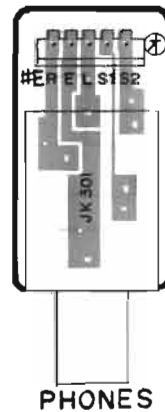
- Tone Control Circuit Board (4)



- Tone Control Circuit Board (6) R, U, C models only



- Tone Control Circuit Board (3)

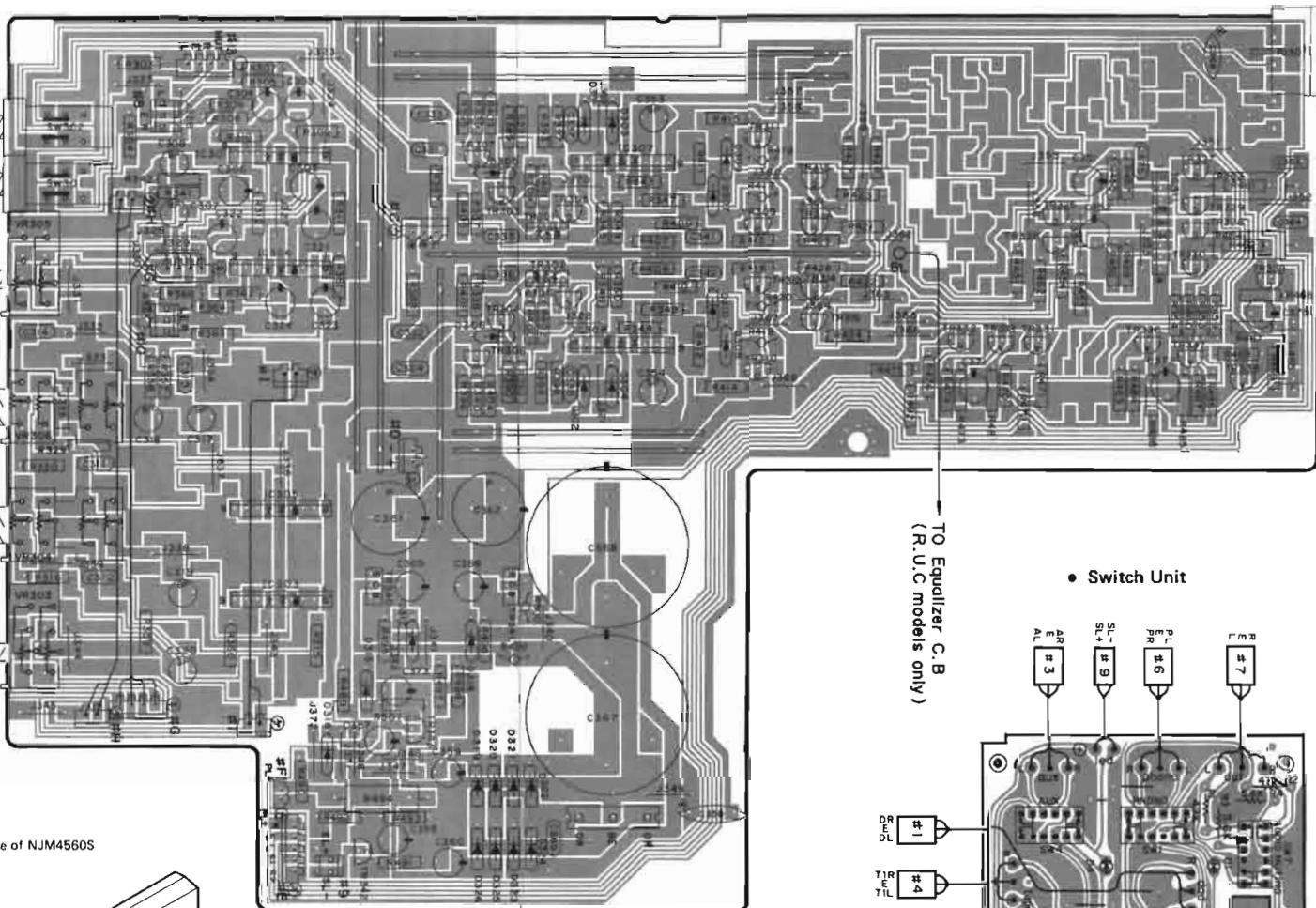


● Tone Control Circuit Board (1)

Note 1 : ● marked

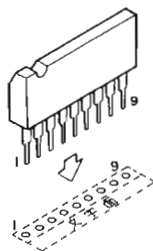
	R, U, C	A, E
C349		0.01
C350		0.01/500

OFF STEREO
 FILTER 15Hz
 SUBSONIC
 MONO MODE
 LEVEL
 TREBLE
 TURNOVERFREQUENCY
 BASS
 LEVEL

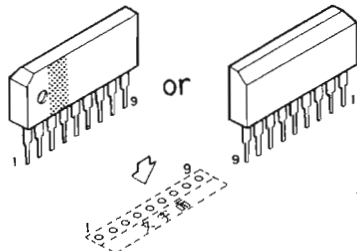


Note 2 : Mounting IC301, 303, 305, 306

In case of BA4561S



In case of NJM4560S



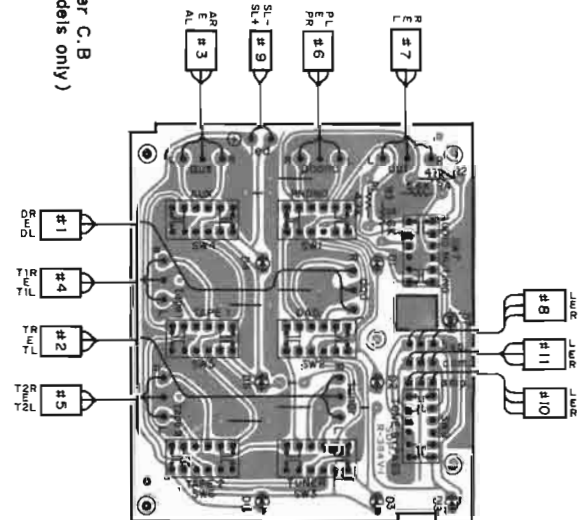
文字面 : Letter side

Note 3 : Code and Connector marks

- ⊙ ▶ #A
- ⊙ ▶ #B
- ⊙ ▶ #C
- ⊙ ▶ #D
- ⊙ ▶ #E
- ⊙ ▶ #F
- ⊙ ▶ #G
- ⊙ ▶ #H
- ⊙ ▶ #I

TO Equalizer C.B
(R, U, C models only)

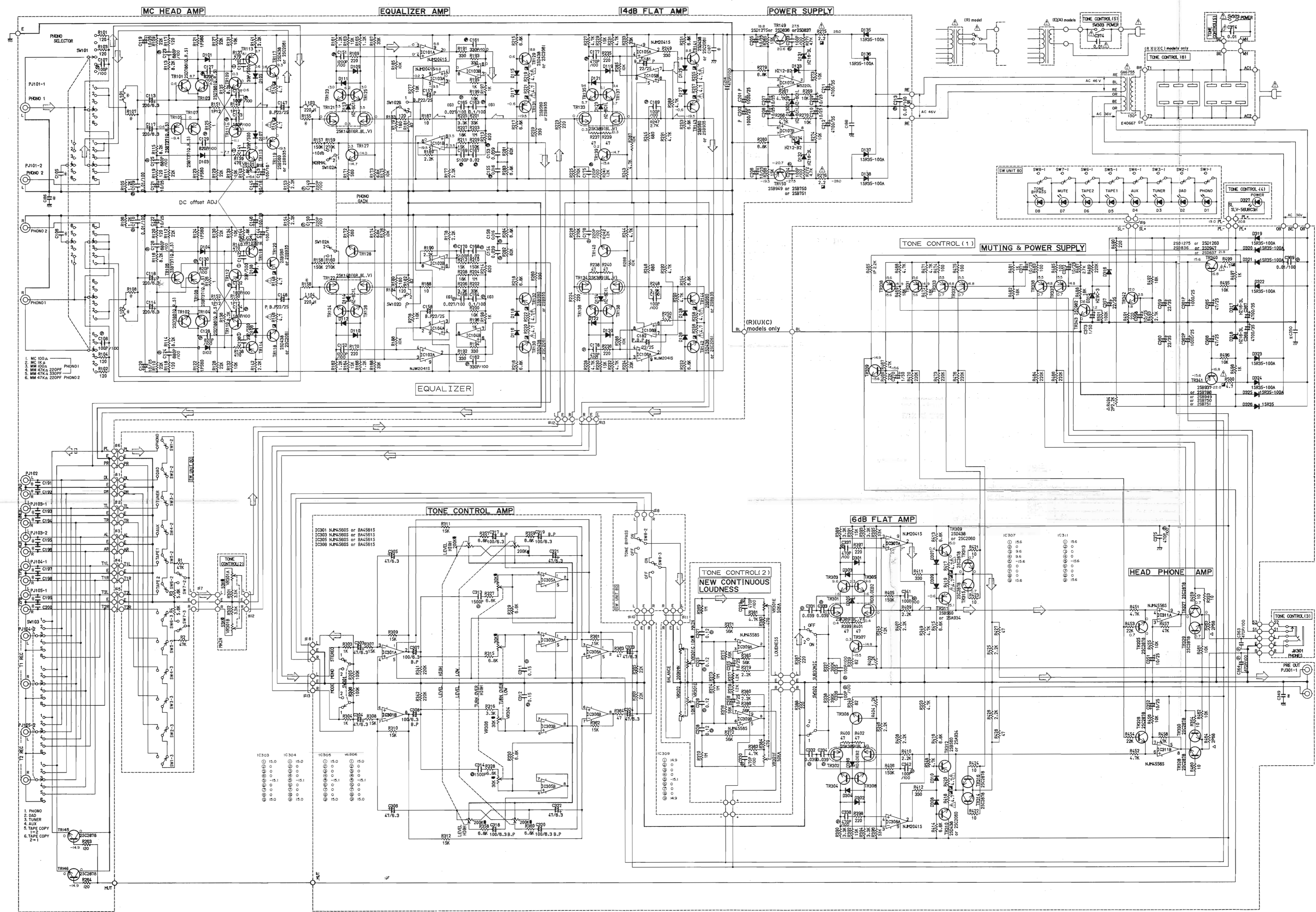
● Switch Unit



PRE OUT

1
2
3
4
5
6

SCHEMATIC DIAGRAM



This schematic diagram is for U.S. and Canadian models. As the following parts and values differ from each model, so refer to the corresponding column.

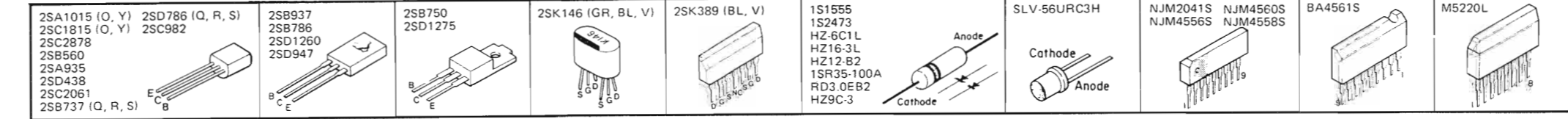
Part	R, U, C	A, E
C105, 106	Open	0.01
C191 ~200	Open	220p
C186, 187	Open	0.01
C188	Open	0.01/500
C349	Open	0.01
C350	Open	0.01/500
L101, 102	Open	15uH
R107, 108	Short	220
R155, 156	220	1.5k
TONE CONTROL (6)	Set	Non Set

- All voltages are measured with a 10MΩ/V DC electric volt meter.
- Components having special characteristics are marked Δ, and must be replaced with parts having specifications equal to those originally installed.
- Schematic diagram is subject to change without notice.

Power Supply Voltage Table

POINT	VOLTAGE
TR149 EMITTER	+20V ± 1V
TR150 EMITTER	-20V ± 1V
TR340 EMITTER	+16V ± 1V
TR341 EMITTER	-16V ± 1V

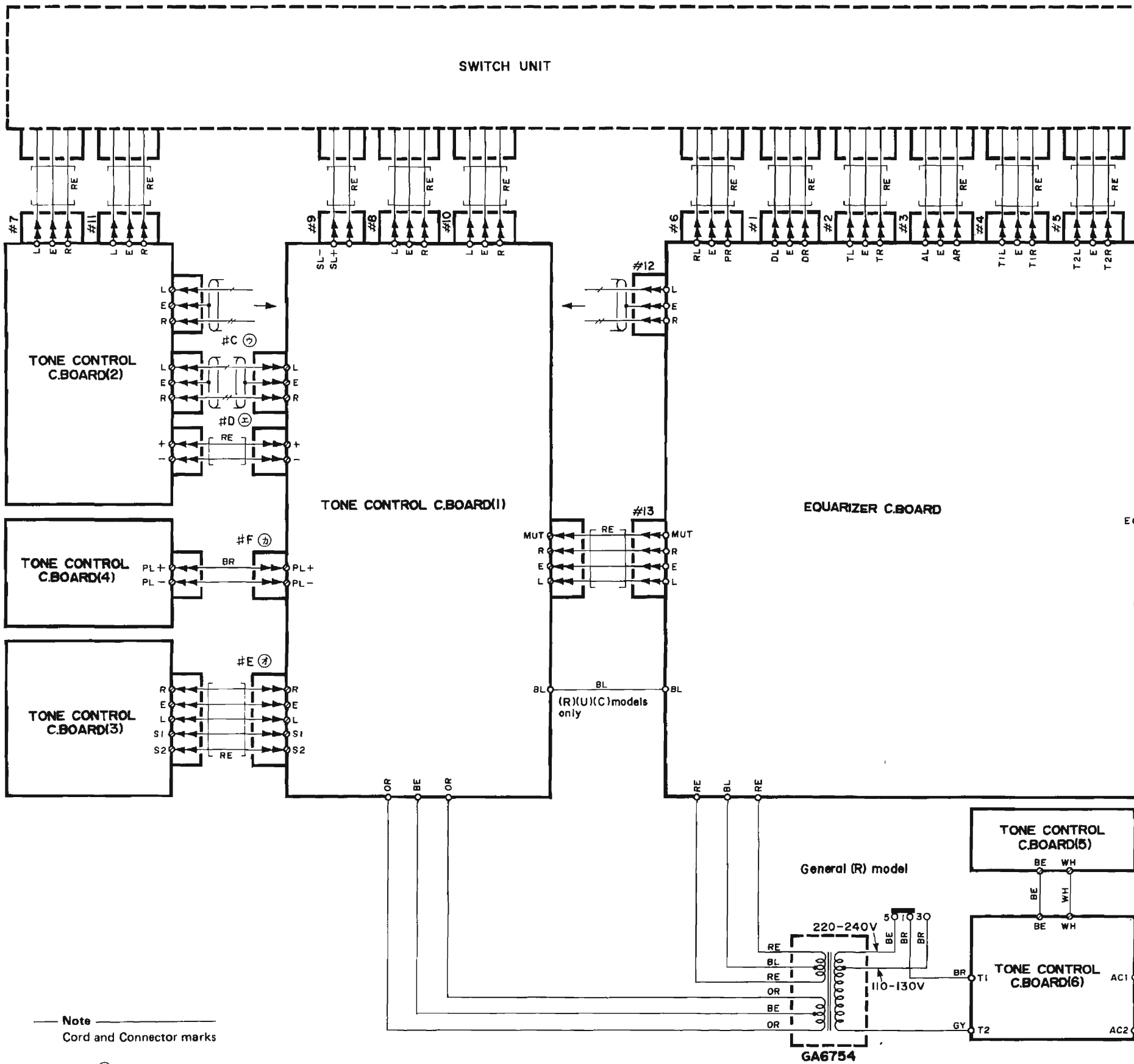
PIN CONNECTION DIAGRAM OF TRANSISTORS, DIODES AND ICs.



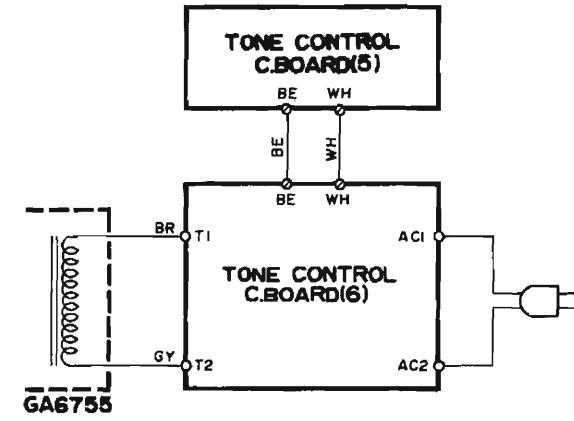
REMARKS	PARTS NAME
NO MARK	CARBON FILM RESISTOR
Δ	METAL OXIDE FILM RESISTOR
▲	METAL FILM RESISTOR
■	METAL PLATE RESISTOR
◆	FLAME PROOF CARBON FILM RESISTOR
⊙	SEMI VARIABLE RESISTOR

REMARKS	PARTS NAME
NO MARK	ELECTROLYTIC CAPACITOR
□	CERAMIC CAPACITOR
⊖	POLYESTER FILM CAPACITOR
⊕	POLYPROPYLENE FILM CAPACITOR

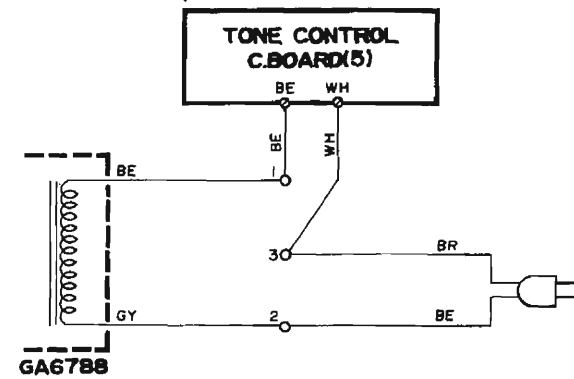
WIRING



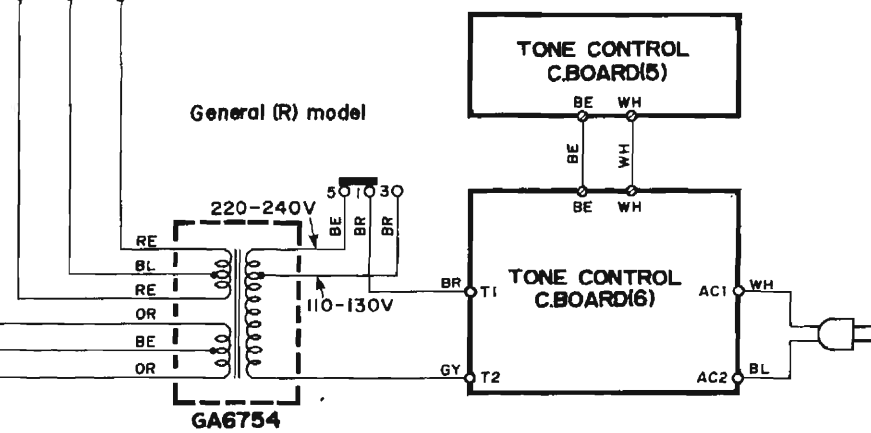
U.S.A. (U) and Canadian (C) models



Australian (A) and European (E) models



General (R) model



WIRE COLOR ABBREVIATIONS

- BL ▶ Black
- BR ▶ Brown
- RE ▶ Red
- OR ▶ Orange
- YE ▶ Yellow
- GR ▶ Green
- BE ▶ Blue
- VI ▶ Violet
- GY ▶ Gray
- WH ▶ White

Note
Cord and Connector marks

- ⊕ ▶ #A
- ⊖ ▶ #B
- ⊕ ▶ #C
- ⊖ ▶ #D
- ⊕ ▶ #E
- ⊖ ▶ #F
- ⊕ ▶ #G
- ⊖ ▶ #H
- ⊕ ▶ #I
- ⊖ ▶ #J

PARTS LIST

- Components having special characteristics are marked Δ and must be replaced with parts having specifications equal to those originally installed.
- Carbon resistors of C-60 are 1/4W. There are no description about them in this parts list. Use the "Parts No." HJ350000 (1/4W) or equivalent.

C-60

ELECTRICAL PARTS

Ref. No.	Part No.	Description	部 品 名	Remarks	Common Model	Markets	ランク
*	NA 08 48 00	Equalizer Circuit Board	イコライザーシート			R,U,C	
*	NA 08 48 10	"	"			A,E	
	FG 41 22 20	Ceramic Cap	セラコン	C191~200		A,E	
	FG 44 41 00	"	"	C105,106,186,187		A,E	
	UT 45 21 00	Polypropylene Film Cap	ポリプロコン	C107,108,189,190,203,204			
*	UT 45 21 80	"	"	C131~134			
	UT 45 22 20	"	"	C149,150,175,176			
	UT 45 23 30	"	"	C161,162			
	UT 45 24 70	"	"	C177,178,214			
	UT 45 26 80	"	"	C123~126			
*	UT 45 28 20	"	"	C127~130			
*	UT 45 31 20	"	"	C151,152			
*	FU 35 13 90	Mica Cap	マイカコン	C135,136,141,142			
	FV 44 91 00	Electrolytic Cap	プラスチックケミコン	C201,202			
	UK 14 72 20	"	B P コン	C147,148,157,158,181,182			
*	FZ 00 61 60	"	ブロックケミコン	C211,212			
	FH 23 41 00	Ceramic Cap	セラコン	C188		A,E	
	FA 15 35 10	Mylar Cap	マイラーコン	C169,170			
	UA 25 41 60	"	"	C155,156			
	UA 25 42 00	"	"	C167,168			
	UA 25 43 90	"	"	C153,154			
	UW 91 82 20	Electrolytic Cap	ケミコン	C113,114,117,118			
	UW 93 81 00	"	"	C143~146			
	UW 94 71 00	"	"	C119~122,205~210			
	UT 45 41 00	Polypropylene Film Cap	ポリプロコン	C109,110,213			
*	UT 46 42 70	"	"	C165,166			
*	UT 46 51 00	"	"	C163,164			
	GE 90 03 30	Choke Coil	チョークコイル	L103,104			
	GE 90 08 40	Coil	コイル	L101,102		A,E	
	HT 41 00 20	Semi Variable Resistor	半固定抵抗	VR101,102			
	HV 45 34 70	Flam Proof Resistor	不燃化カーボン抵抗	R145~148,219~222,255~258			Δ
	HV 45 32 20	"	"	R275,276			Δ
*	HZ 00 44 50	Carbon Resistor	カーボン抵抗	R149~152			
*	HZ 00 44 60	"	"	R121~124			
	iA 10 15 70	Transistor	トランジスタ	TR111~114			
*	iB 07 50 00	"	"	TR150			
	iC 18 15 00	"	"	TR109,110,115,116,123~128,135~140			
	iC 28 78 00	"	"	TR145,146			
*	iD 12 75 10	"	"	TR149			
	iE 10 22 40	FET	F E T	TR121,122			
	iE 10 45 10	Dual FET	デュアル F E T	TR133,134			
	iB 05 60 00	Transistor	トランジスタ	TR119,120,131,132,143,144	} Inter-changeable		
	iX 60 32 80	"	"	"			
	iD 04 38 00	"	"	TR117,118,129,130,141,142	} Inter-changeable		
	iX 60 32 90	"	"	"			
	iB 07 37 00	"	"	TR105~108			
	iD 07 86 00	"	"	TR101~104			

* New Parts (新規部品)

C-60

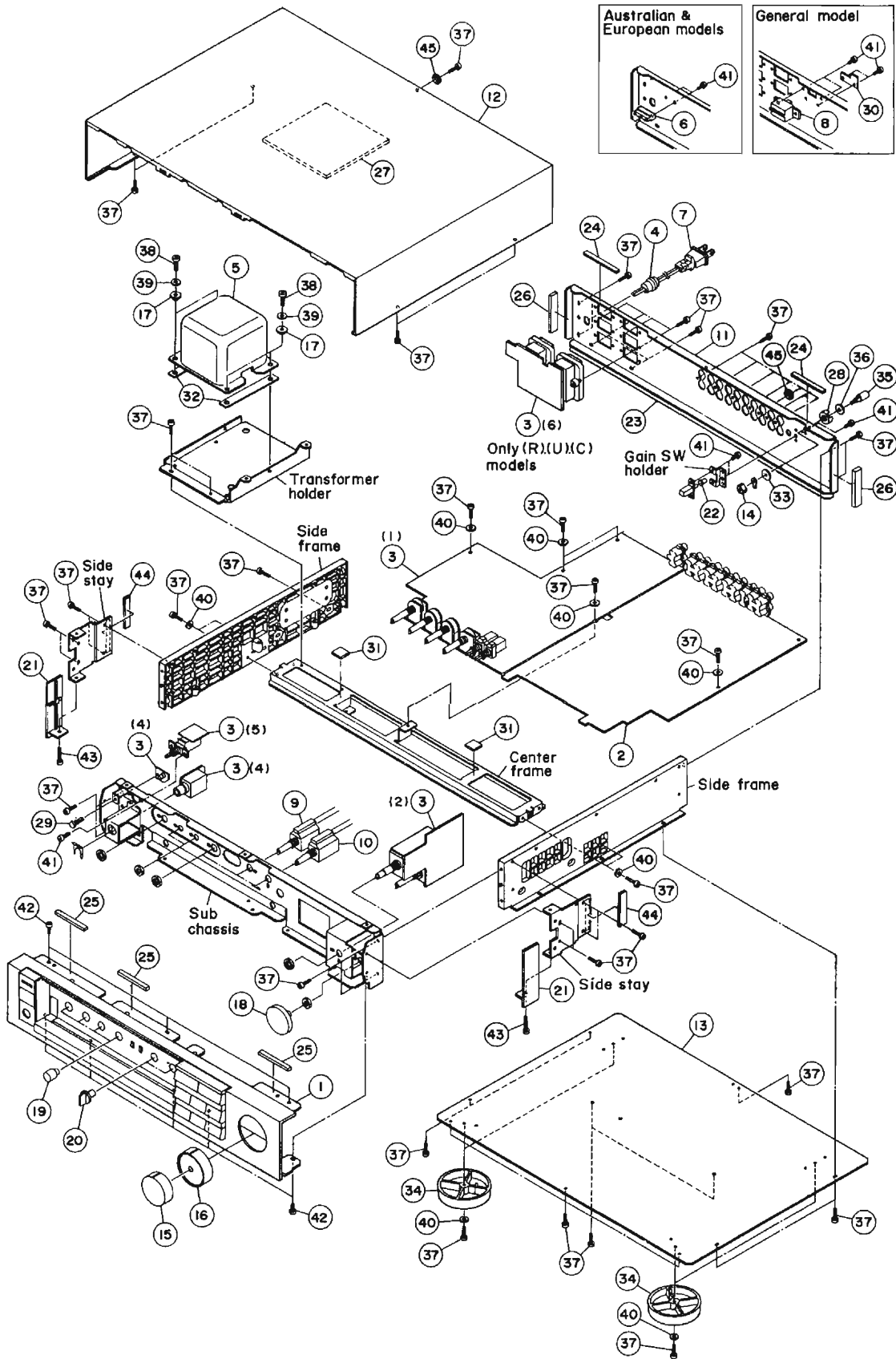
Ref. No.	Part No.	Description	部 品 名	Remarks	Common Model	Markets	ランク
※	iF 00:00:40	Diode	1S1555	ダイオード	D101~112,115~122,125~128 } Inter-changeable		
	iF 00:06:70	"	1S2473	"			
	iF 00:15:10	Zener Diode	HZ-6CIL	ツェナーダイオード	D113,114,123,124,129,130		
	iF 00:20:80	"	HZ16-3L	"	D131,132		
	iF 00:23:50	"	HZ12-B2	"	D133,134		
	iH 00:14:30	Diode	1SR35-100A	ダイオード	D135~138		
	iG 07:69:00	IC	NJM2041S	i C	IC101~106		
	iG 09:20:00	"	M5220L	"	IC107		
※	KA 90:68:60	Push Switch		リモートプッシュスイッチ	SW102	C-80	
※	KA 90:69:10	"		リモートロータリースwitch	SW103	C-80	
※	KA 90:69:20	"		"	SW101	C-80	
	LB 20:25:60	Pin Jack	2P	ピンジャック	PJ102		
	LB 40:10:30	"	4P	"	PJ104,105		
※	LB 40:13:00	"	4P	"	PJ101		
	LB 40:10:50	"	4P	"	PJ103		
	LA 00:21:20	Wrapping Terminal	3P P=5 i-Type	i型ラッピング端子板			
	LA 00:21:10	"	2P P=5 i-Type	"		R,U,C	
	LB 91:80:30	Base Pin	3P i-Type	i型ベースピン			
	LB 91:80:40	"	4P i-Type	"			
	LB 92:10:30	Connector Plug	3P i-Type	i型コネクタプラグ			
※	AA 62:18:30	Holder, Switch		ゲインSWホルダー			
	BA 08:09:10	Heat Sink		放 熱 板		C-80	
	BB 07:04:10	Bus Bar	ℓ=55	バ ス バ ー		C-80,40	
	BB 07:04:20	"	ℓ=100	"		C-80,40	
	ED 33:00:66	Binding Head Screw	3×6 FCM3-BI	バ イ ン ド 小 ネ ジ	PACK		
※	NA 08:48:20	Tone Control Circuit Board		トーンコントロールシート			R,U,C
※	NA 08:48:30	"		"			A,E
	Fi 41:41:00	Ceramic Cap	0.01μF	セ ラ コ ン	C374		
	FG 44:41:00	"	0.01μF 50V	"	C349		A,E
	FH 23:41:00	"	0.01μF 500V	"	C350		A,E
	UT 45:21:00	Polypropylene Film Cap	100pF 100V	ポ リ プ ロ コ ン	C335,336,341,342		
	UT 45:24:70	"	470pF 100V	"	C329,330,337,338,375,363,364		
	FV 44:91:00	Electrolytic Cap	1000μF 25V	ブ ラ ス チ ッ ク コ ン	C361,362		
※	FZ 00:61:60	"	4700μF 35V	ブ ロ ッ ク ケ ミ コ ン	C367,368		
	UA 25:31:50	Mylar Cap	1500pF 50V	マ イ ラ ー コ ン	C313,314		
	UA 25:43:90	"	0.039μF 50V	"	C331~334		
	FA 15:51:20	"	0.12μF 50V	"	C325~328		
	UA 25:51:50	"	0.15μF 50V	"	C311,312		
※	UK 14:72:20	Electrolytic Cap	22μF 25V	B P コ ン	C353,354		
	UK 11:81:00	"	100μF 63V	"	C307,308,317~320		
	UT 45:41:00	Polypropylene Film Cap	0.01μF 100V	ポ リ プ ロ コ ン	C369		
	UW 91:74:70	Electrolytic Cap	47μF 6.3V	ケ ミ コ ン	C303~306,321~324		
	UW 94:71:00	"	10μF 25V	"	C351,352,355,356,358,371~372		
	UW 94:74:70	"	47μF 25V	"	C365,366		
	UJ 45:72:20	"	22μF 35V	"	C357,359,360		
	UW 96:61:00	"	1μF 50V	"	C370,373		
	HL 71:62:20	Metal Oxide Film Resistor	2.2kΩ 1P	酸 金 抵 抗	R465		

※New Parts (新規部品)

Ref. No.	Part No.	Description	部 品 名	Remarks	Common Model	Markets	ランク
	HL 32 46 80	Metal Oxide Film Resistor	68kΩ 2P	酸 金 抵 抗	R463,464		
*	HL 32 62 20	"	2.2kΩ 2P	"	R494		
	HV 45 34 70	Flame Proof Resistor	4.7Ω	不燃化カーボン抵抗	R417~420,499,500		△
*	HS 41 22 60	Variable Resistor	200kΩ×2	可 変 抵 抗 器	VR303,305		
*	HS 41 22 10	"	30kΩ×2	"	VR304,306		
*	HS 41 22 50	"	MN20kΩ	"	VR302,		
*	HY 00 18 90	"	(A50kΩ+10kΩ+53kΩ)×2	"	VR301		
	iA 10 15 70	Transistor	2SA1015(O,Y)	ト ラ ン ジ ス タ	TR331~333,336~338		
*	iB 09 37 00	"	2SB937	"	TR341		
*	iB 07 86 00	"	2SB786	"	" } Inter-changeable		
	iC 09 82 00	"	2SC982	"	TR343		
	iC 18 15 70	"	2SC1815(O,Y)	"	TR303~308,339,342		
	iC 28 78 00	"	2SC2878	"	TR313~316,325~330		
*	iD 12 60 00	"	2SD1260	"	TR340		
*	iD 09 47 00	"	2SD947	"	" } Inter-changeable		
	iE 10 45 10	Dual FET	2SK389(BL,V)	デ ィ ア ル F E T	TR301,302		
	iB 05 60 00	Transistor	2SB560	ト ラ ン ジ ス タ	TR311,312		
*	iX 60 32 80	"	2SA935	"	" } Inter-changeable		
	iD 04 38 00	"	2SD438	"	TR309,310		
*	iX 60 32 90	"	2SC2061	"	" } Inter-changeable		
	iF 00 00 40	Diode	1S1555	ダ イ オ ード	D301~304,307~310,316 } Inter-changeable		
	iF 00 06 70	"	1S2473	"	"		
	iF 00 18 40	Zener Diode	RD3.0EB2	ツェナーダイオード	D305,306		
	iF 00 20 80	"	HZ16-3L	"	D317,318		
	iF 00 33 20	"	HZ9C-3	"	D315		
	iF 00 44 40	LED (Red)	SLV-56URC3H	L E D (アカ)	D327		
	iH 00 14 30	Diode	1SR35-100A	ダ イ オ ード	D319~326		
	iG 07 68 00	IC	NJM4558S	I " C	IC309		
	iG 07 69 00	"	NJM2041S	"	IC307,308		
	iG 07 74 00	"	NJM4556S	"	IC311		
	iG 12 18 00	"	NJM4560S	"	IC301,303,305,306		
	iG 13 30 00	"	BA4561S	"	" } Inter-changeable		
*	KA 80 44 80	Push Switch		プッシュスイッチ	SW301,302	C-80	
	KA 80 32 90	Power Switch	SDLCP002	電 源 ス イ ッ チ	SW303	C-80	R,U,C
*	KA 80 45 00	"	TV-3	"		C-80	A,G
	LB 20 26 10	Pin Jack	2P	ピ ン ジャ ッ ク	PJ301		R,U,C
	LB 20 25 60	"	2P	"	"		A,E
	LB 30 15 20	Phone Jack		ホ ー ン ジャ ッ ク	JK301	C-80	
	LA 00 24 00	Wrapping Terminal	P=7.5 3P L-Type	L型ラッピング端子板			R,U,C
	LA 00 23 20	"	P=7.5 3P i-Type	i型ラッピング端子板			
*	LB 60 71 90	AC Outlet		A C ア ウ ト レ ッ ト			R,U,C
	LB 92 10 20	Connector Plug	2P i-Type	i 型 コ ネ ク タ ー プ ラ グ			
	LB 92 10 30	"	3P i-Type	"			
	BB 07 04 10	Bus Bar	ℓ=55	バ ス バ ー		C-80,40	
	BB 07 04 20	"	ℓ=100	"		C-80,40	

*New Parts (新規部品)

EXPLODED VIEW



MECHANISM PARTS

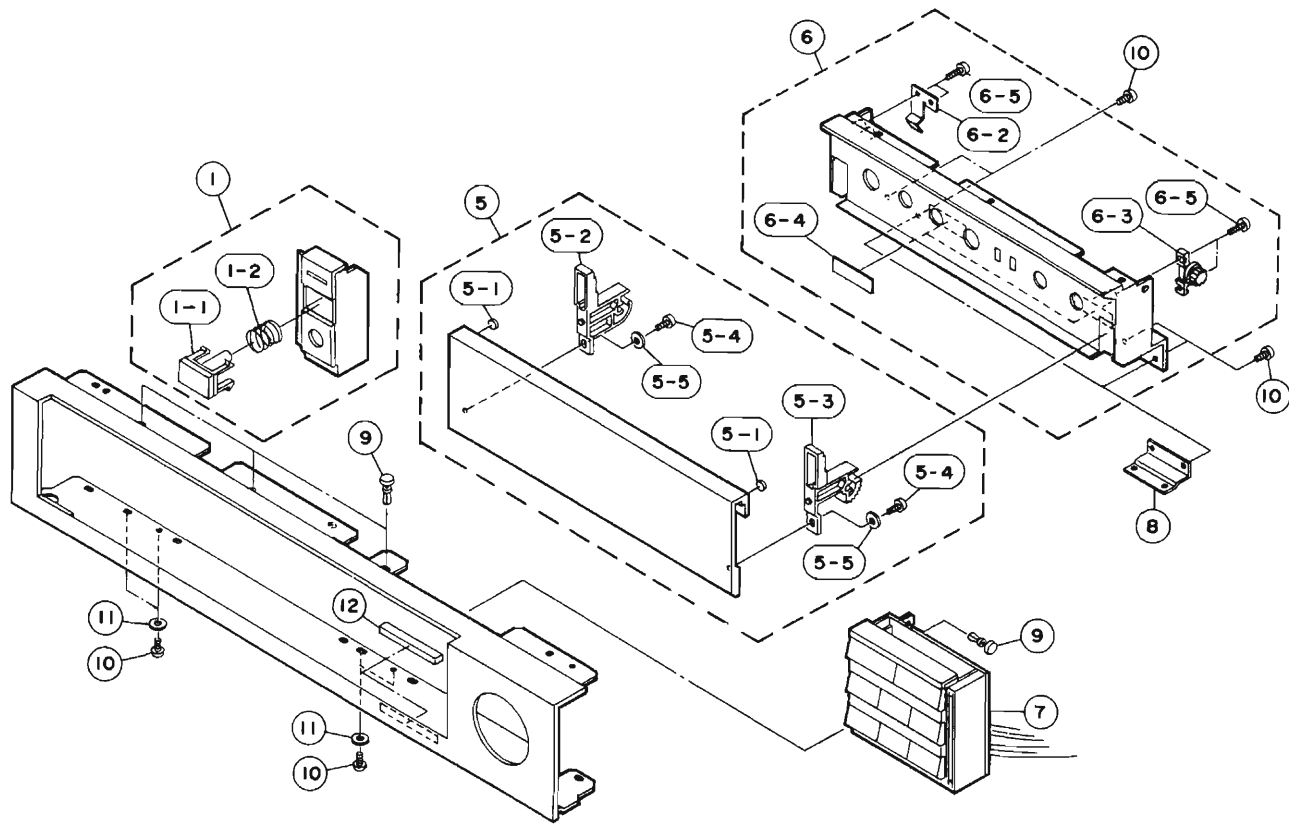
Ref. No.	Part No.	Description	部 品 名	Remarks	Common Model	Markets	ランク	
※ 1	NB 62 04 10	Panel Unite	パネルユニット					
※ 2	NA 08 48 00	Equalizer Circuit Board	イコライザーシート			R,U,C		
※ "	NA 08 48 10	"	"			A,E		
※ 3	NA 08 48 20	Tone Control Circuit Board	トーンコントロールシート			R,U,C		
※ "	NA 08 48 30	"	"			A,E		
4	CB 62 02 00	Cord Stopper	CM-22C	コードストッパー	C-40	U,C		
"	CB 62 01 90	"	CM-22B	"	C-80	R,A,E		
※ 5	GA 67 54 00	Power Transformer		電源トランス	C-80	R	△	
※ "	GA 67 55 00	"		"	C-80	U,C	△	
※ "	GA 67 88 00	"		"	C-80	A,E	△	
6	LA 00 10 00	Terminal Lug	CV-3P 94V-O	ラグ端子板	C-80	A,E	△	
7	MG 00 14 50	Power Cord	10A 125V 1.98m	電源コード } Inter-changeable		U,C	△	
"	MG 00 14 60	"	10A 125V 2m		"		U,C	△
"	MG 00 09 20	"	75A 250V 2.5m	" } Inter-changeable	C-80	A	△	
"	MG 00 14 90	"	7.5A 250V 2.5m		"	C-80	A	△
"	MG 00 16 20	"	2.5A 250V 2m	"	C-80	E	△	
"	MG 00 16 30	"	6A 250V 2m	"	C-80	R	△	
8	KA 40 12 60	Slide Switch	SS-12 5A/40A	スライドスイッチ	Voltage Selector	C-80,40	R	△
※ 9	KA 90 68 70	Remote Rotary Switch		リモートロータリースイッチ	REC OUT	C-80		
※ 10	KA 90 68 80	"		"	PHONO	C-80		
※ 11	AA 62 18 40	Rear Panel		リアパネル		R		
※ "	AA 62 18 50	"		"		U,C		
※ "	AA 62 18 60	"		"		A		
※ "	AA 62 18 70	"		"		E		
※ 12	AA 62 18 00	Top Cover		トップカバー	C-80,40			
※ 13	AA 62 18 10	Bottom Cover		ボトムカバー	C-80,40			
14	AA 09 57 20	Bonding Nut		ボンディングナット	C-80			
※ 15	BA 08 98 40	Knob		ツマミ	VOLUME	C-80,40		
※ 16	BA 08 98 50	"		"	LOUDNESS	C-80,40		
※ 17	CB 62 30 40	Isolation Bush		絶縁ブッシュ		C-80		
※ 18	CB 62 99 30	Knob		ツマミ	BALANCE	C-80		
19	CB 62 08 20	"		"	BASS, TREBLE	C-80		
20	CB 62 08 40	"		"	REC OUT, PHONO	C-80		
21	CB 60 76 90	Side Plate		サイドプレート		C-70,80		
22	CB 62 72 40	Push Button		ブッシュボタン	PHONO GAIN	C-2X,80		
23	CB 62 33 60	Isolation Spacer		絶縁スペーサー		C-80,40		
24	CB 62 38 70	Rubber Antivibration		防振ゴム		C-80,40		
25	CB 60 50 60	Damper		ダンパー				
26	CB 60 95 40	"		"				
27	CB 61 84 40	"		"				
28	CB 07 81 70	Saucer		受皿				
29	CB 06 88 80	Plastic Rivet		プラスチックリベット				
30	CB 60 14 40	Stopper, VS		V S ストッパー		R		
※ 31	CB 63 29 60	Damper		ダンパー		C-80		
※ 32	CA 07 59 40	Spacer		トランススペーサー		C-80		
※ 33	CA 07 59 20	Fiber, GND		GNDファイバー		C-80		
※ 34	NB 62 01 40	Leg Ass'y		脚 Ass'y		C-80,40		
35	NB 08 14 80	Terminal Unit		ターミナルユニット				
36	EV 90 13 60	Sems Plain Washer	φ3.6 φ10 t=0.8 FNM3-3g	セムス平座金				
37	Ei 33 00 86	Binding Head Tapping Screw	3×8 FCM3-BI	バインドタッピングネジ	PACK			
38	Ei 34 01 00	"	4×10 FCM3-BI	"	PACK			
39	EV 20 30 46	Plain Washer	φ4 FCM3-BI	平座金	PACK			
40	EV 20 30 36	"	φ3 FCM3-BI	"	PACK			

※New Parts (新規部品)

Ref. No.	Part No.	Description	部品名	Remarks	Common Model	Markets	ランク
41	ED 33:00:66	Binding Head Screw	3×6 FCM3-BI	バインド小ネジ			
42	Ei 33:00:66	Binding Head Tapping Screw	3×6 FCM3-BI	バインドタッピングネジ			
43	Ei 33:01:46	"	3×14 FCM3-BI	"			
* 44	CA 07:62:80	Spacer		スペーサー			
45	EV 41:30:36	Toothed Locked Washer	φ3 FCRM3-BI	歯付座金			
	CB 06:92:50	Binding Tie	Bk-1	インシュロックタイ			
		Accessories		付属品			
	Mi 06:62:10	Pin Cord	1.2m	出力コード			

*New Parts (新規部品)

EXPLODED VIEW (Panel Unit)



C-60

YAMAHA

Use Restrictions Agreement

- ⊗ This file is intended for personal use only.
- ⊗ Do not share, redistribute or re-sell this file.
- ⊗ DO NOT trade this manual on any manuals trading website.
- ⊗ DO NOT post this file or upload into any public forum, bulletin boards, newsgroups, or websites.



More Manuals available at:

www.Analogalley.com

(we have the largest archives of vintage manuals available on the web).

An Analog Alley Scan.