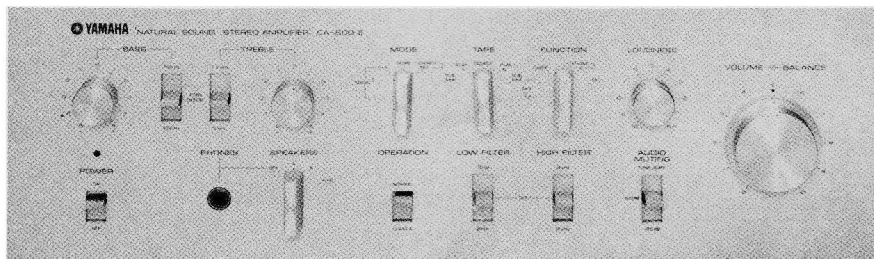


# SERVICE MANUAL

## CA-800II

PRE-MAIN AMPLIFIER



SINCE 1887



# YAMAHA

NIPPON GAKKI CO., LTD. HAMAMATSU, JAPAN

ASM-39

① 08 ☉



Printed in Japan 4 · 76

## CONTENTS

CIRCUIT DESCRIPTIONS .....	1
PARTIAL DISASSEMBLY .....	1
EXTERNAL VIEW .....	2
INTERNAL VIEW .....	4
SPECIFICATIONS .....	5
ADJUSTMENT OF MAIN AMP CIRCUIT BOARD .....	6
PRINTED CIRCUIT BOARD	
FUNCTION CIRCUIT BOARD NA06623 .....	7
TONE CONTROL CIRCUIT BOARD NA06773 .....	8
FILTER CIRCUIT BOARD NA06535 .....	9
MAIN AMP CIRCUIT BOARD NA06540 .....	9
VOLUME CIRCUIT BOARD NA06531 .....	10
POWER CIRCUIT BOARD NA06679 .....	10
ELECTROLYTIC CIRCUIT BOARD NA06547 .....	10
POWER CIRCUIT BOARD NA06679 .....	10
OPERATION SWITCH CIRCUIT BOARD NA06354 .....	11
REAR PANEL CIRCUIT BOARD NA06778 .....	11
BLOCK DIAGRAM .....	12
OVERALL SCHEMATIC DIAGRAM .....	13
PARTIAL CHANGES MADE ACCORDING TO DESTINATION .....	15
PARTS CATALOG .....	17

## CIRCUIT DESCRIPTIONS

Refer to CA-1000's SERVICE MANUAL

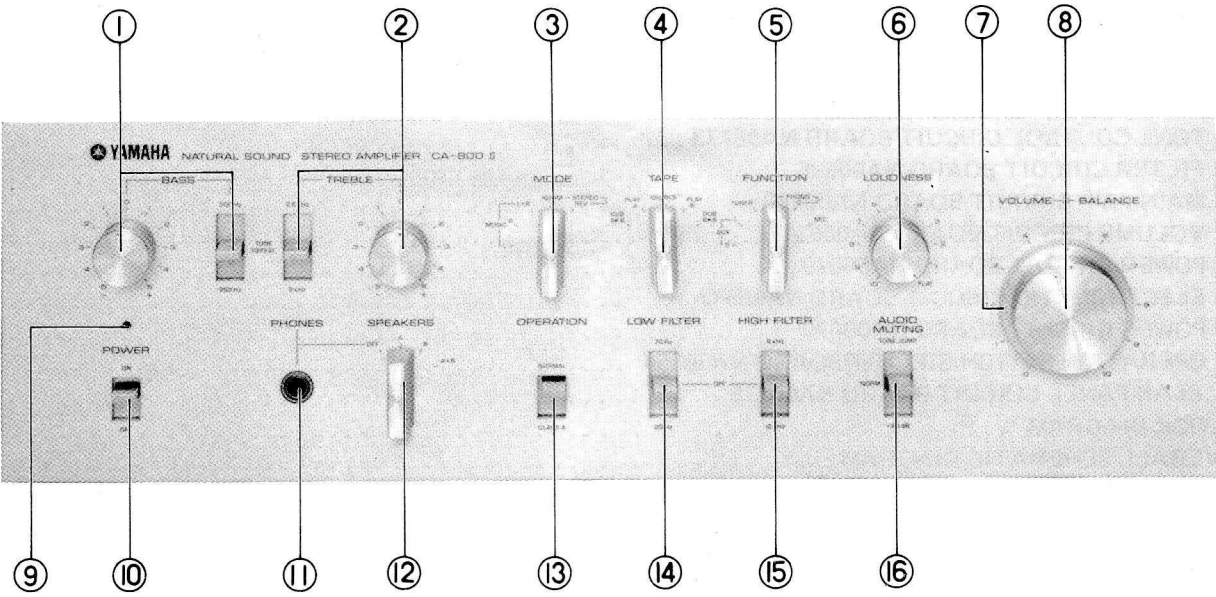
1. CONTINUOUS LOUDNESS CIRCUIT
2. SPECIAL YAMAHA TONE CONTROL SYSTEM
3. A CLASS AND B CLASS OPERATION
4. PROTECTION CIRCUITS

## PARTIAL DISASSEMBLY

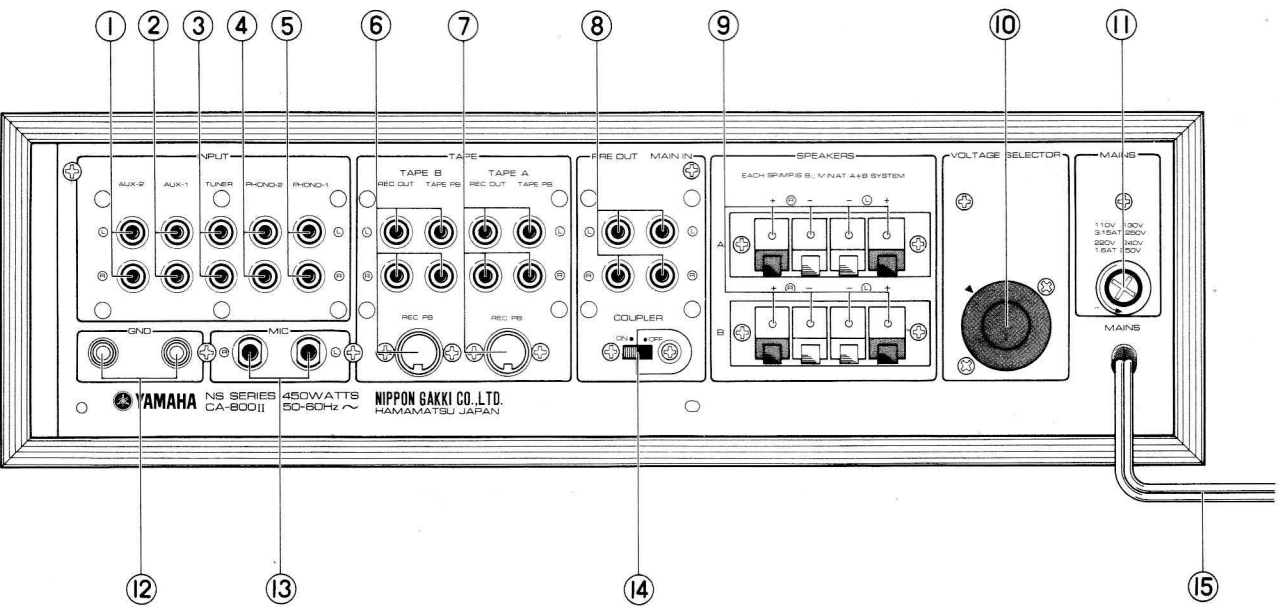
Refer to CA-1000's SERVICE MANUAL.

# EXTERNAL VIEW

## FRONT PANEL



## REAR PANEL



**FRONT PANEL**

- ① BASS TONE CONTROL & TURN OVER SWITCH
- ② TREBLE TONE CONTROL & TURN OVER SWITCH
- ③ MODE SELECTOR
- ④ TAPE SELECTOR
- ⑤ FUNCTION SELECTOR
- ⑥ LOUDNESS CONTROL
- ⑦ BALANCE CONTROL
- ⑧ VOLUME CONTROL
- ⑨ POWER INDICATOR LAMP
- ⑩ POWER SWITCH
- ⑪ HEADPHONE JACK
- ⑫ SPEAKERS SELECTOR
- ⑬ A CLASS/B CLASS OPERATION SWITCH
- ⑭ LOW FILTER SWITCH
- ⑮ HIGH FILTER SWITCH
- ⑯ AUDIO MUTING SWITCH

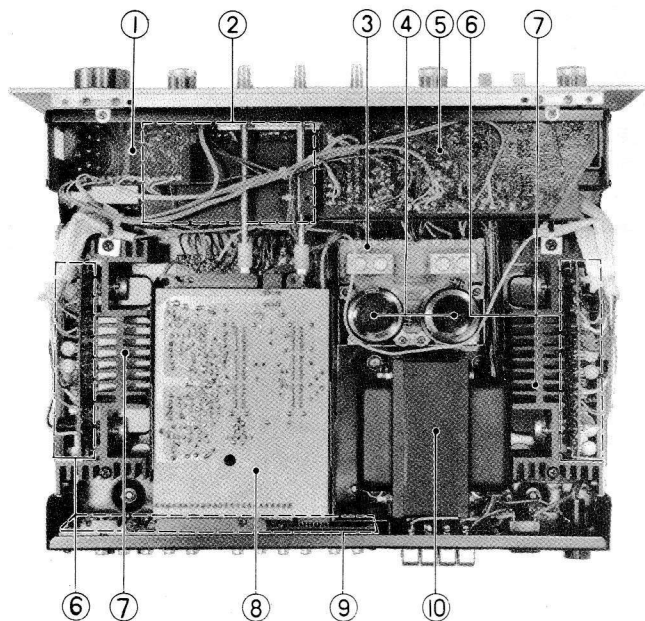
**REAR PANEL**

- ① AUX 2 INPUT JACKS
- ② AUX 1 INPUT JACKS
- ③ TUNER INPUT JACKS
- ④ PHONO 2 INPUT JACKS
- ⑤ PHONO 1 INPUT JACKS
- ⑥ TAPE B CONNECTOR/JACKS
- ⑦ TAPE A CONNECTOR/JACKS
- ⑧ PRE OUT/MAIN IN JACKS
- ⑨ SPEAKER TERMINALS
- ⑩ VOLTAGE SELECTOR
- ⑪ PRIMARY FUSE
- ⑫ GROUND TERMINALS
- ⑬ MICROPHONE JACKS
- ⑭ COUPLER SWITCH
- ⑮ AC CORD



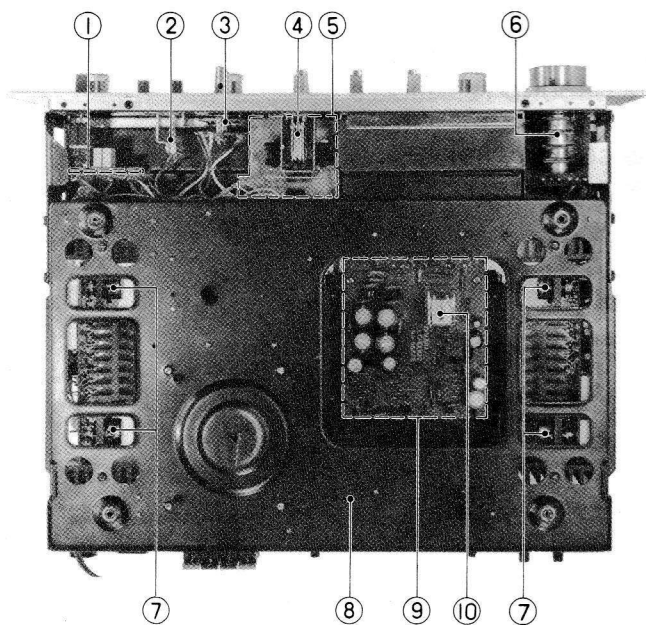
## INTERNAL VIEW

### TOP VIEW



- ① VOLUME CIRCUIT BOARD (NA06531)
- ② FILTER CIRCUIT BOARD (NA06535)
- ③ ELECTROLYTIC CAPACITOR CIRCUIT BOARD (NA06547)
- ④ ELECTROLYTIC CAPACITOR (10,000 $\mu$ F/50WV)
- ⑤ TONE CONTROL CIRCUIT BOARD (NA06773)
- ⑥ MAIN AMP CIRCUIT BOARD (NA06540)
- ⑦ HEAT SINK
- ⑧ FUNCTION CIRCUIT BOARD (NA06623)
- ⑨ REAR PANEL CIRCUIT BOARD (NA06778)
- ⑩ POWER TRANSFORMER (GA60882)

### BOTTOM VIEW



- ① POWER SWITCH CIRCUIT BOARD (NA06687)
- ② HEADPHONE JACK
- ③ SPEAKER SELECTOR
- ④ OPERATION SWITCH
- ⑤ OPERATION SWITCH CIRCUIT BOARD (NA06354)
- ⑥ VARIABLE RESISTOR (Volume/Balance Control: HB250K $\Omega$ x2  
A100K $\Omega$  x 2)
- ⑦ POWER TRANSISTOR
- ⑧ CHASSIS
- ⑨ POWER CIRCUIT BOARD (NA06679)
- ⑩ SPEAKER PROTECTION CIRCUIT RELAY (HC-2P)

## SPECIFICATIONS

## ■ POWER AMP SECTION

## CIRCUIT SYSTEM

Switched A/B type all stage  
direct coupled pure comple-  
mentary SEPP OCL circuit

## DYNAMIC POWER (IHF, 8Ω) 160W

## OUTPUT

20Hz ~ 20kHz Both Channels Driven	B Class, 8Ω	50W x 2
	A Class, 8Ω	10W x 2
1kHz (Both Channels Driven)	B Class, 8Ω	55W x 2
	A Class, 8Ω	10W x 2
1kHz (One Channel Driven)	B Class, 8Ω	60W
	B Class, 4Ω	90W
	A Class, 8Ω	10W

## TOTAL HARMONIC DISTORTION

B Class at Rated Output	0.1%
B Class at 1W Output	0.04%
A Class at Rated Output	0.1%
A Class at 1W	0.02%

## INTERMODULATION DISTORTION

(70Hz : 7kHz = 4:1)

B Class at Rated Power	0.1%
B Class at 1W	less than 0.05%
A Class at Rated Power	0.1%
A Class at 1W	less than 0.05%

## POWER BANDWIDTH

(IHF, Both Channels Driven 0.5%)

B Class	10Hz ~ 70kHz
A Class	10Hz ~ 100kHz

## FREQUENCY RESPONSE

B Class	20Hz ~ 100kHz $0 \pm 0$ dB
A Class	20Hz ~ 100kHz $0 \pm 0$ dB

## INPUT SENSITIVITY

B Class	775mV
A Class	345mV

## INPUT IMPEDANCE

100kΩ

## OUTPUT TERMINALS

Speaker Terminals	A, B, A+B,
Headphone Jack	4Ω ~ 16Ω

## DAMPING FACTOR

(1kHz, 8Ω) 70

## S/N RATIO

(IHF, A Network)	100dB
Residual Noise (8Ω Pre-Amp + Power Amp)	0.8mV

## PRE-AMP SECTION

## CIRCUIT SYSTEM

Equalizer Amp

Tone Control Amp

## INPUT SENSITIVITY AND IMPEDANCE

Phono 1	3mV/ 30kΩ	50kΩ	100kΩ
Phono 2	3mV/50kΩ		
Phono Maximum Input			
Capacity (at 1kHz)	310mVrms (870mVp-p)		
Tuner	120mV/50kΩ		
Aux, 1, 2	120mV/50kΩ		
Tape PB A, B	120mV/50kΩ		

## OUTPUT LEVEL AND IMPEDANCE

Tape Rec Out A, B	120mV/2kΩ
Pre Out	775mV/2kΩ

## FREQUENCY RESPONSE

Phono (RIAA equalization)	
	30Hz ~ 15kHz $\pm 0.2$ dB
Tuner, Aux, Tape PB	20Hz ~ 20kHz $\pm 0.2$ dB

## TONE CONTROLS

Bass (Turn over = 250Hz)	50Hz $\pm 15$ dB
	250Hz, 500Hz
Treble (Turn over = 2.5kHz)	10kHz $\pm 10$ dB
	2.5kHz, $\pm 3$ dB

## AUDIO MUTING

-20dB

## FILTERS

Low	20Hz, 70Hz (-12 dB/oct.)
High	6kHz, 12kHz (-6 dB/oct.)

## LOUDNESS CONTROL

Continuous loudness control to  
be treated as loudness curve

## S/N RATIO (IHF, A Network)

Phono 1	80dB
Phono 2	80dB
Tuner, Aux, Tape	90dB

## ■ AUXILIARY CIRCUITS

Transistorized Protector Circuit (ASO detection limiter system)  
Speaker Protection Circuit (Voltage direction relay drive system)  
Operation Switch A Class/B Class switchover  
Tape Dubbing Switch Tone Jump Switch  
Continuous Loudness

## ■ GENERAL

Power Source	AC110, 117, 130, 220, 240V
	50 ~ 60Hz
Power Consumption Rated	
European model	450W

## ■ DIMENSIONS

436(W)x144(H)x323m/m(D)

## ■ WEIGHT

14.0 kg

Specifications subject to change without notice.

## ADJUSTMENT OF MAIN AMP CIRCUIT BOARD

### BEFORE MEASUREMENT

- Turn the Pre/Main amp. coupler switch Off.
- After the power switch is turned on, wait 3~4 minutes before measuring, to be sure of the most

stable operation.

- Do not connect speakers or dummy load resistance to the speaker terminals.

a. Mid-Point Potential Adjustment

Set the voltage between SP Out terminal and E to  $0V \pm 0.01V$  with VR601.

b. B Class Idling Current Adjustment

Set the Operation switch to Normal.

Set the voltage between TP3 and TP4 to  $0.047V \pm 0.01V$  with VR602.

TP3 : (+)

TP4 : (-)

c. A Class Idling Current Adjustment

Set the Operation switch to Class A.

Set the voltage between TP3 and TP4 to  $0.85V \pm 0.05V$  with VR603.

TP3 : (+)

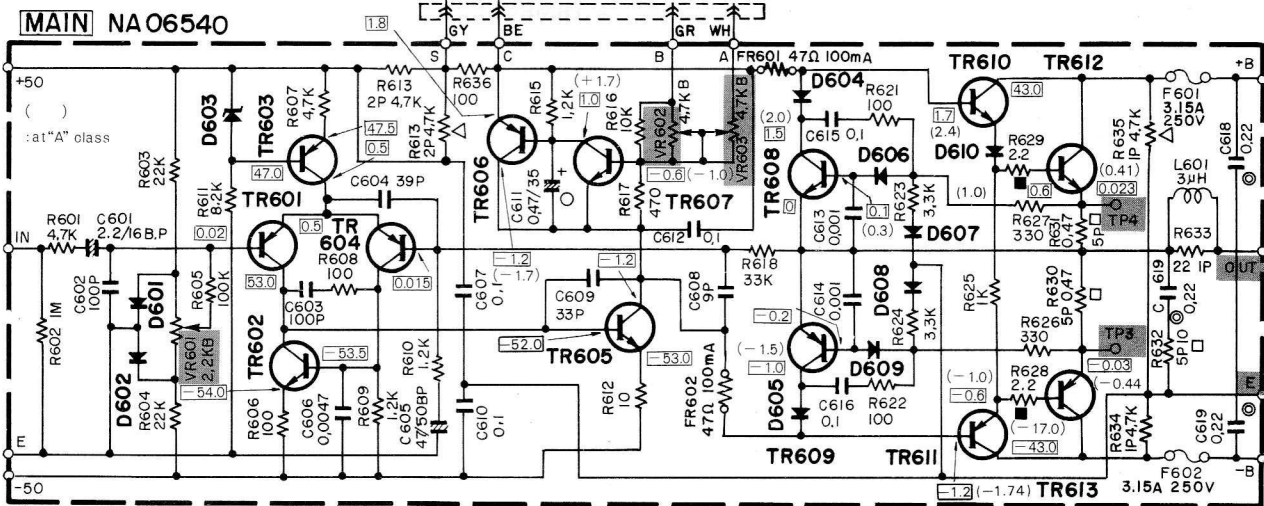
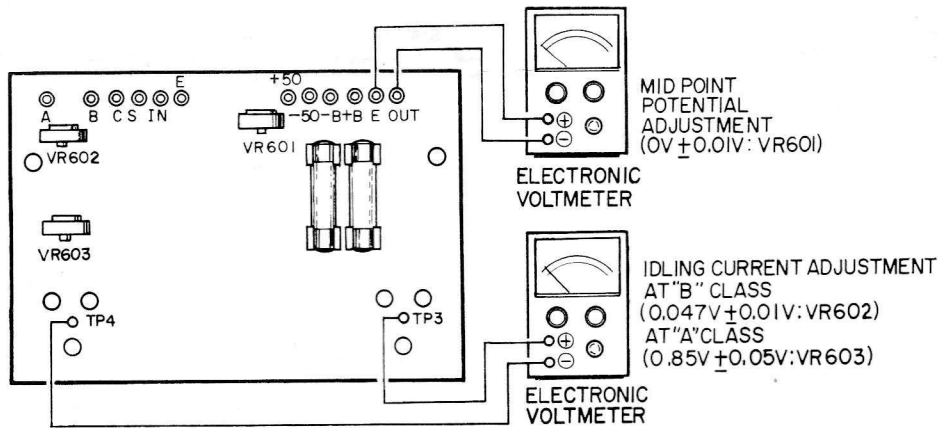
TP4 : (-)

- d. Repeat procedures a-c above several times until each is within the allowable limits.

Note

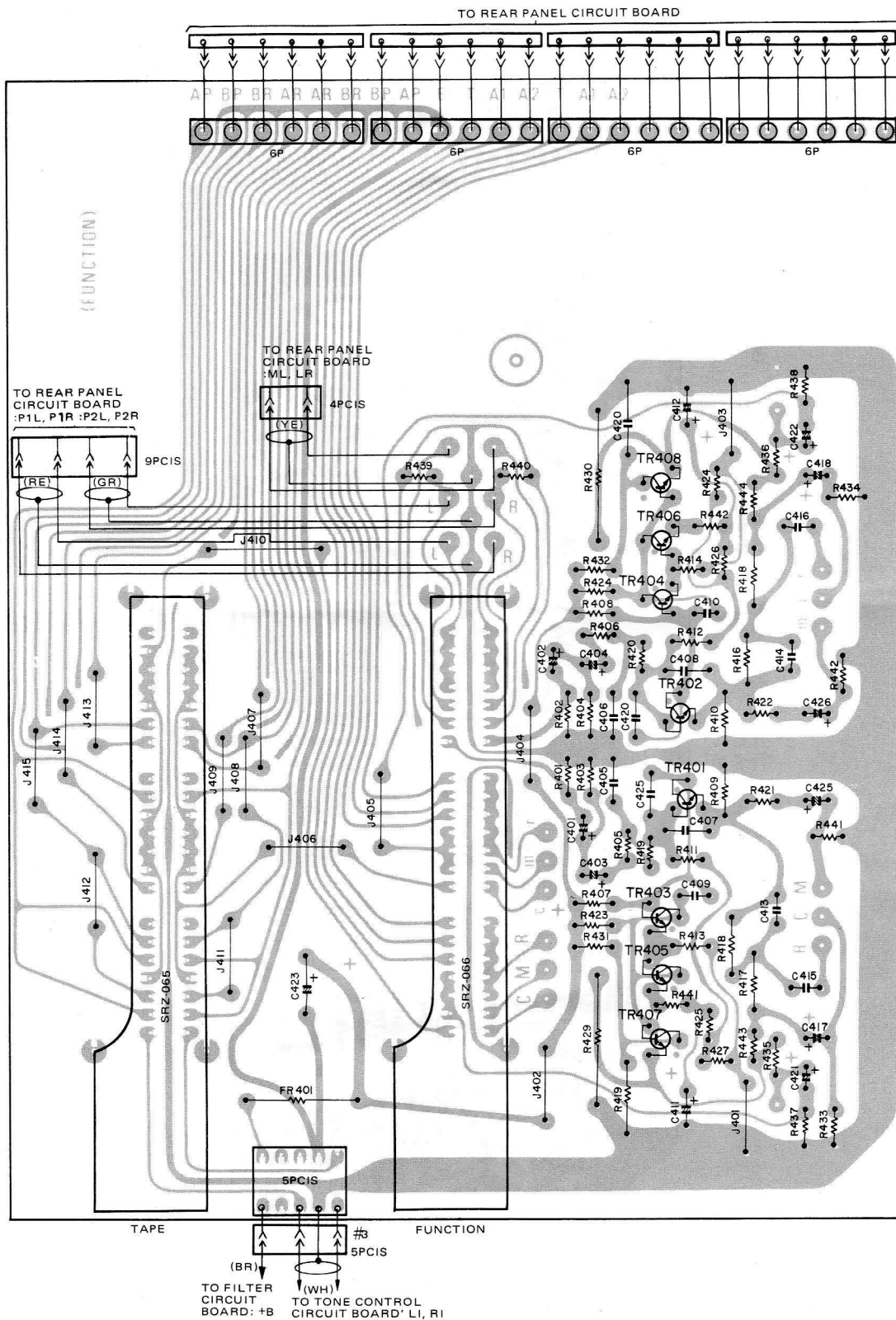
Turn the volume gently during adjustment.

Pay close attention to the polarity of each test point.

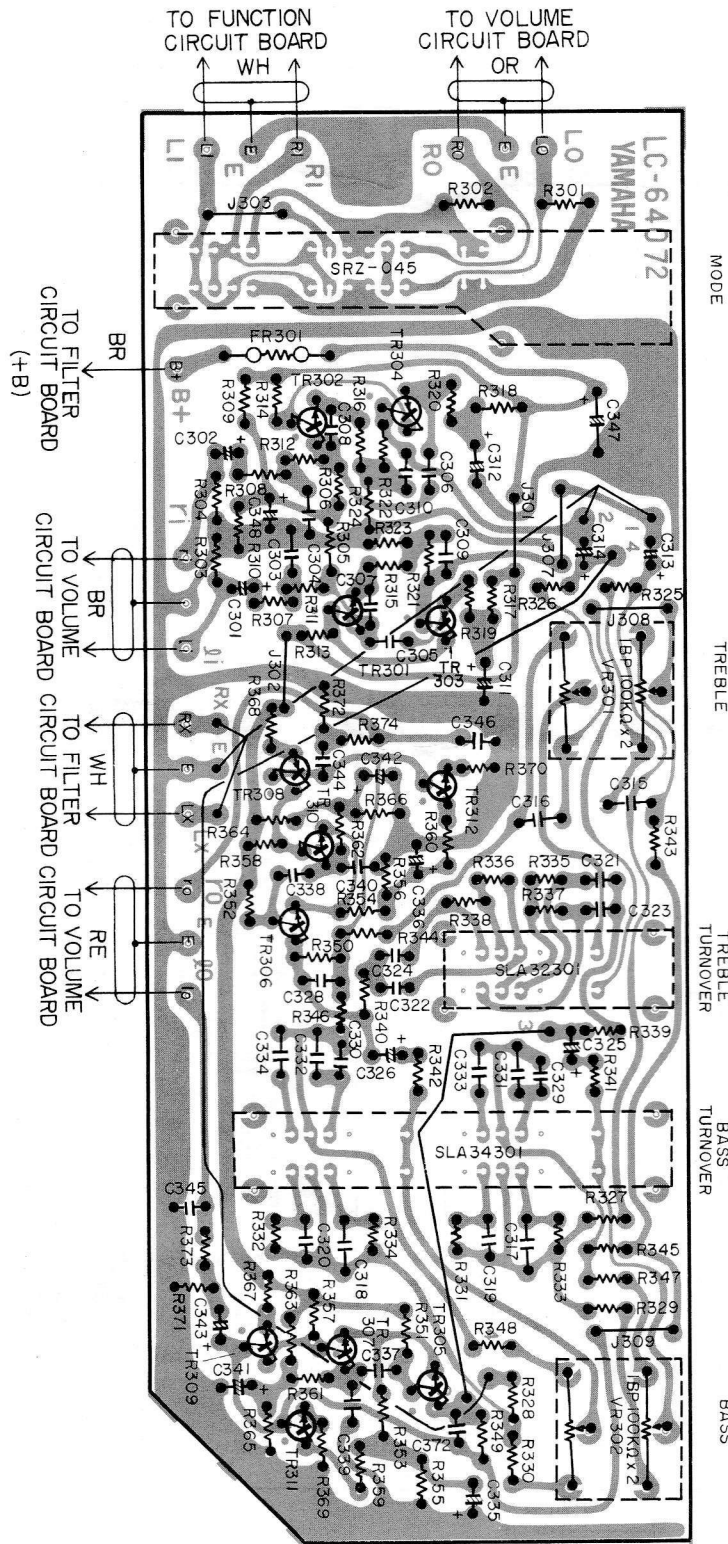


# PRINTED CIRCUIT BOARD

## FUNCTION CIRCUIT BOARD NAO6623

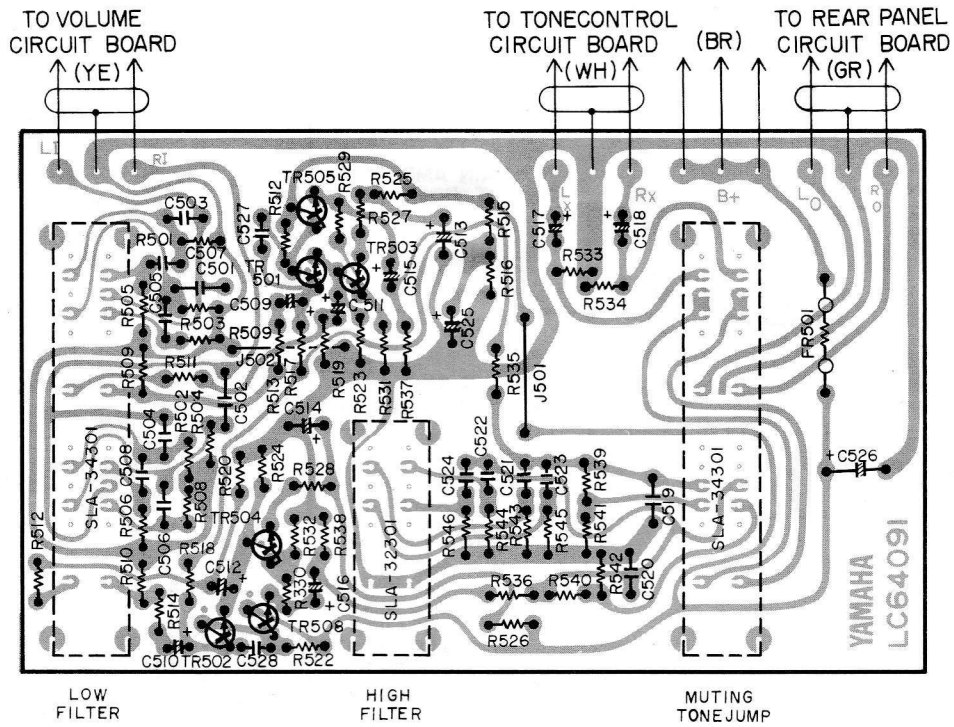


# TONE CONTROL CIRCUIT BOARD NAO6773

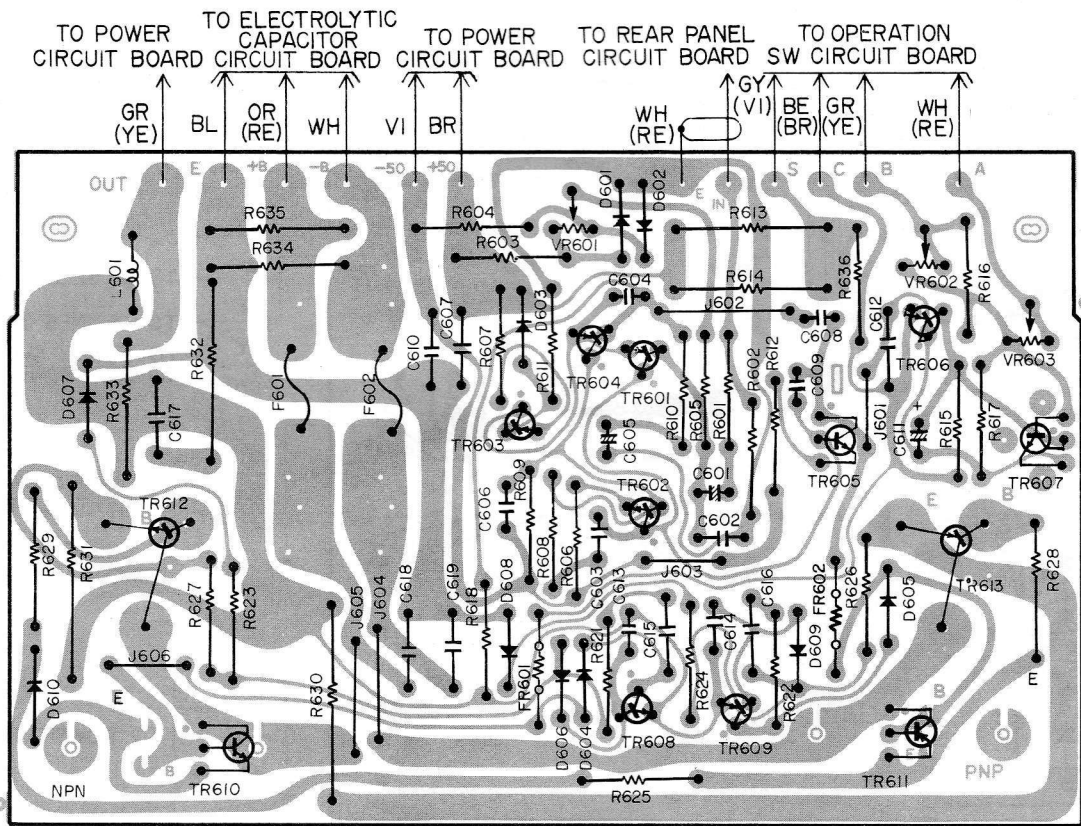




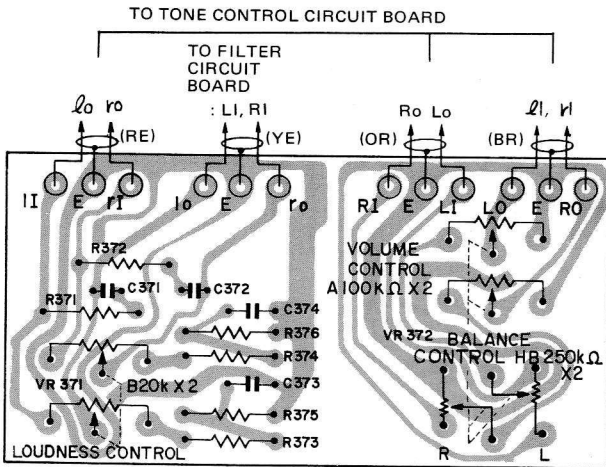
**FILTER CIRCUIT BOARD NAO6553**



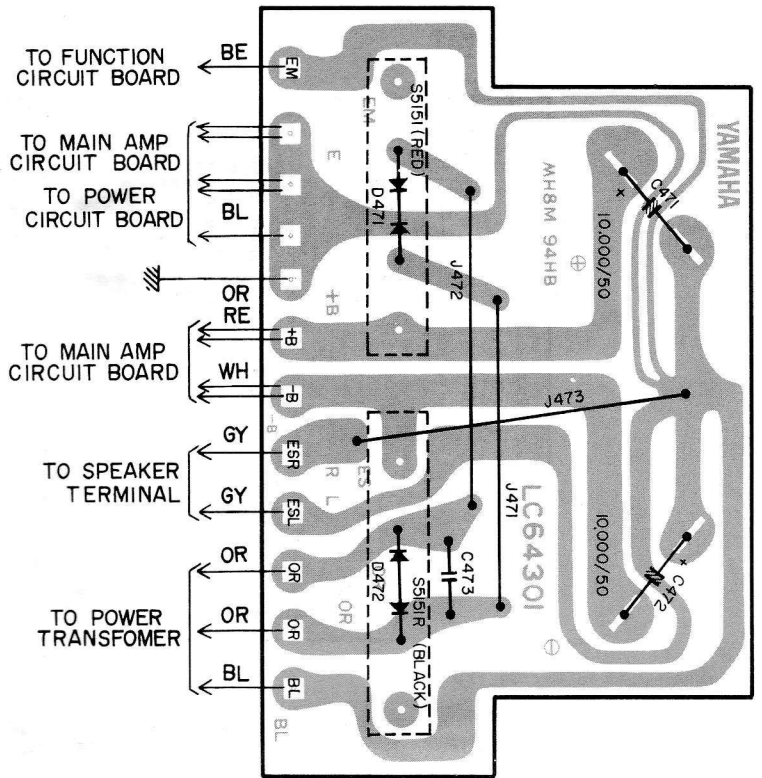
**MAIN AMP CIRCUIT BOARD NAO6540**



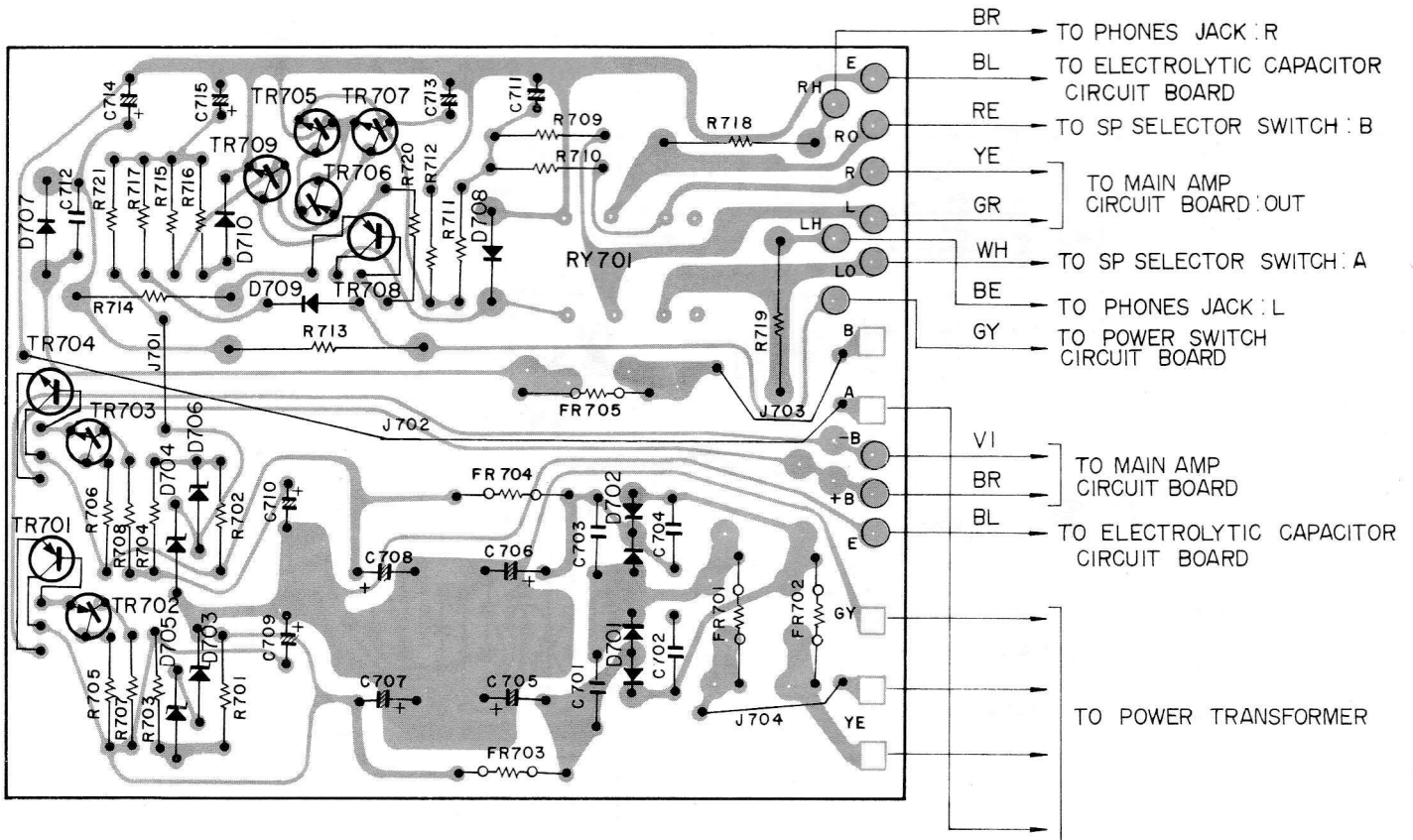
**VOLUME CONTROL BOARD NAO6531**



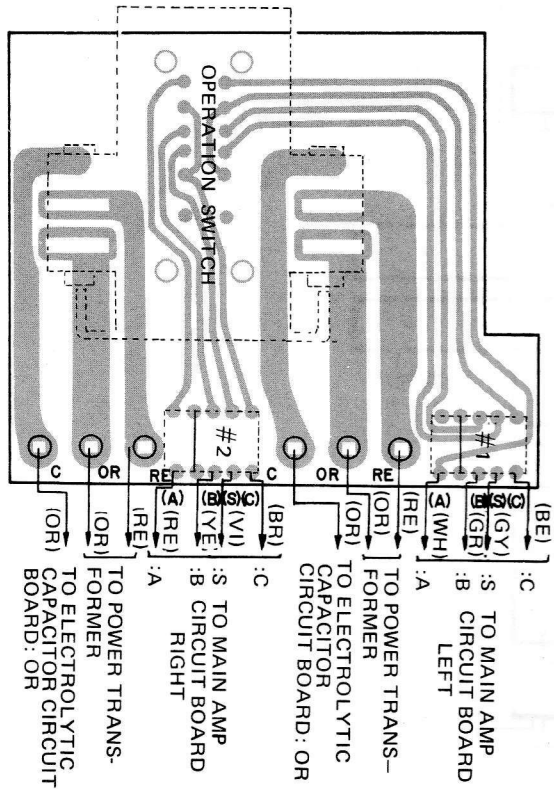
**ELECTROLYTIC CAPACITOR CIRCUIT BOARD NAO6547**



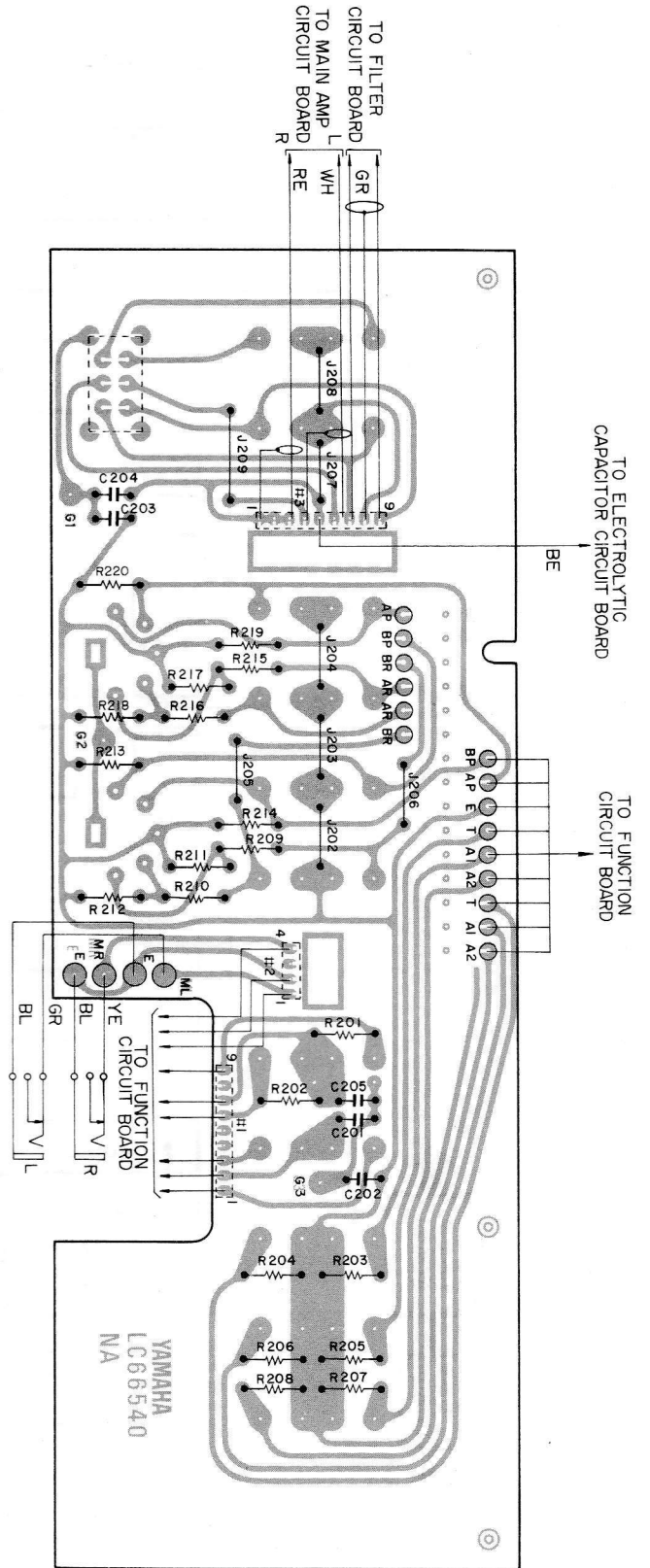
**POWER CIRCUIT BOARD NAO6679**



**OPERATION SWITCH CIRCUIT BOARD  
NAO6354**



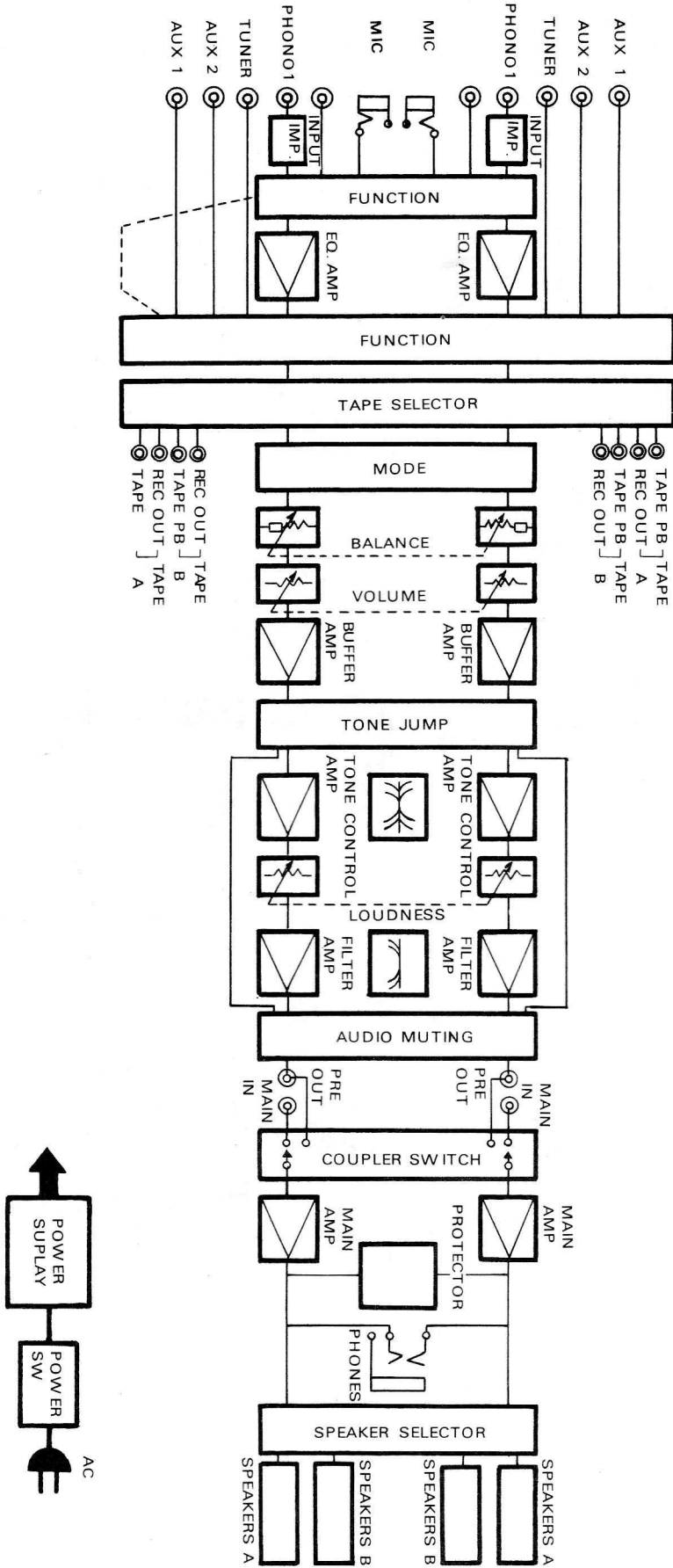
**REAR PANEL CIRCUIT BOARD NAO6778**



YAMAHA  
LC66540  
NA

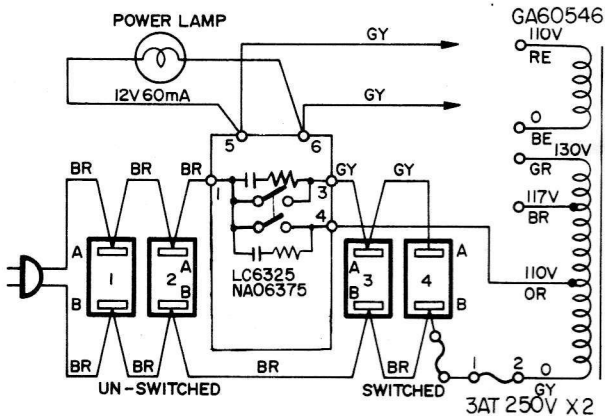


**BLOCK DIAGRAM**

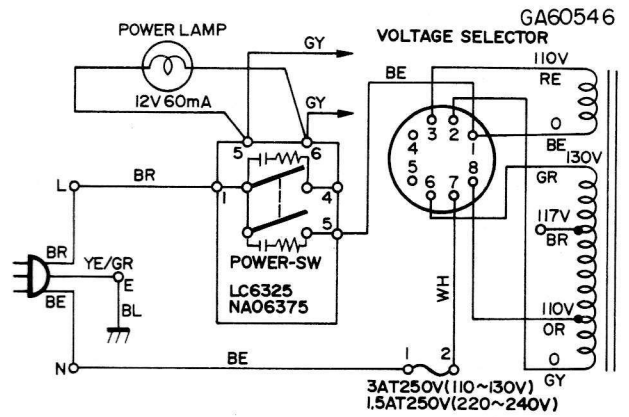


# PARTIAL CHANGES MADE ACCORDING TO DESTINATION

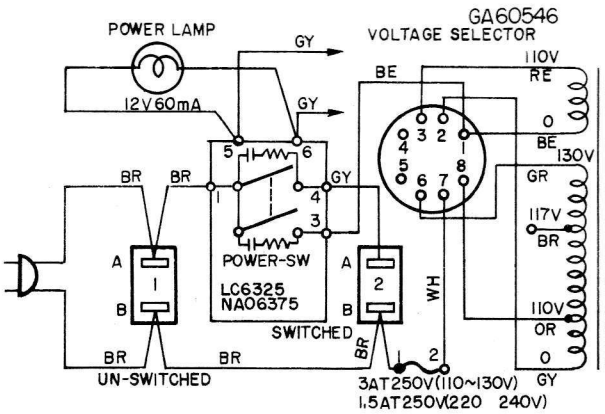
## ▼ U.S. & CANADIAN MODELS



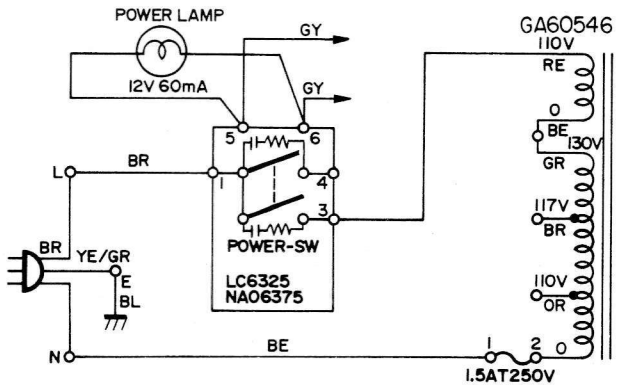
## ▼ SOUTH AFRICAN MODEL



## ▼ GENERAL MODEL

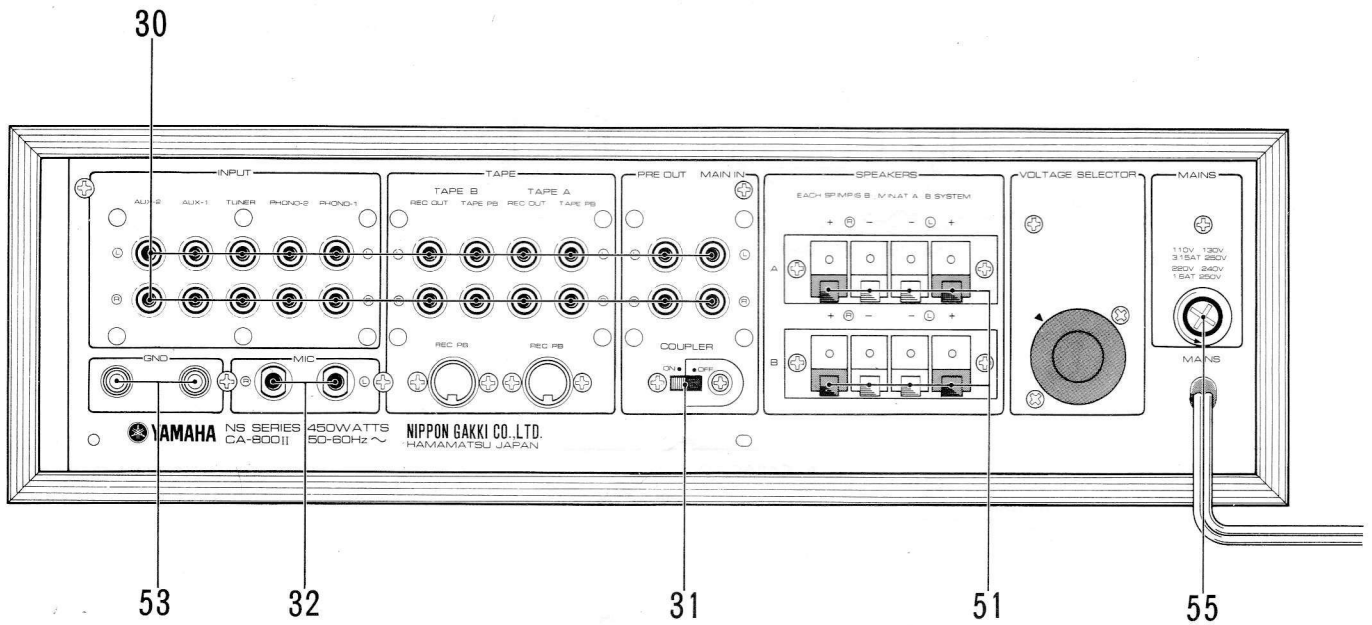
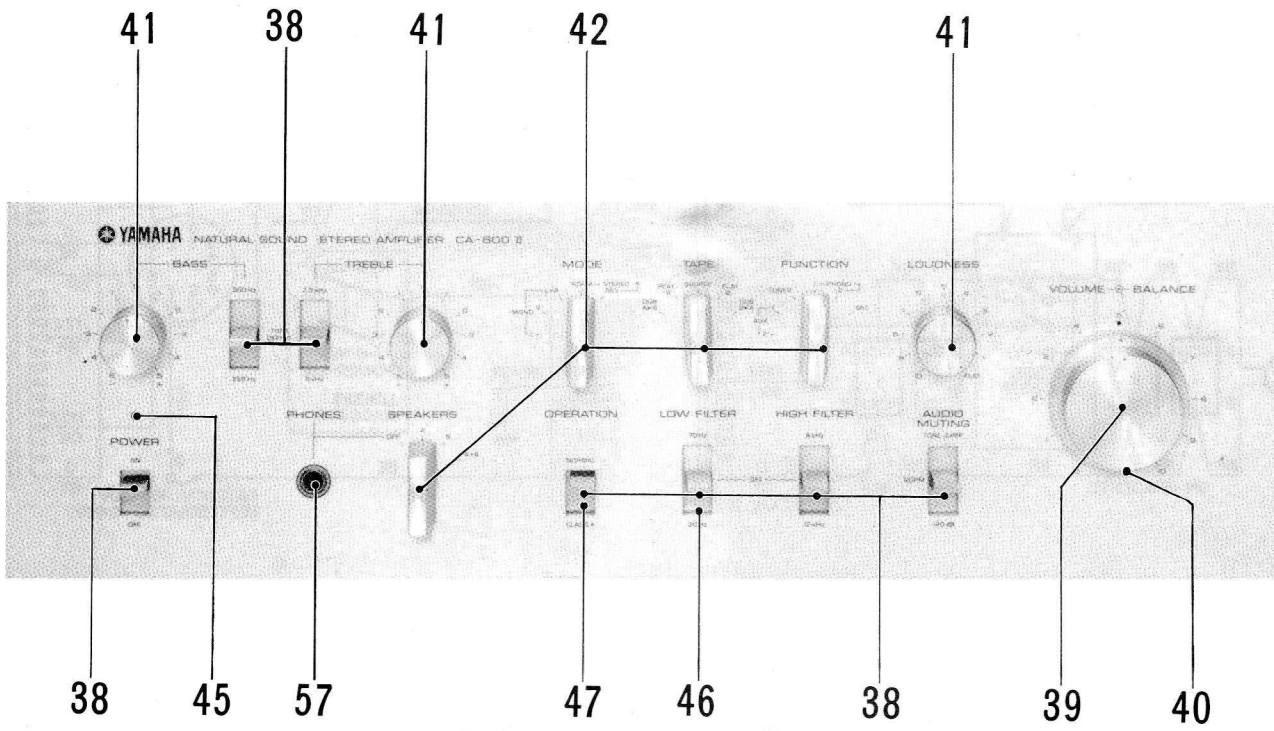


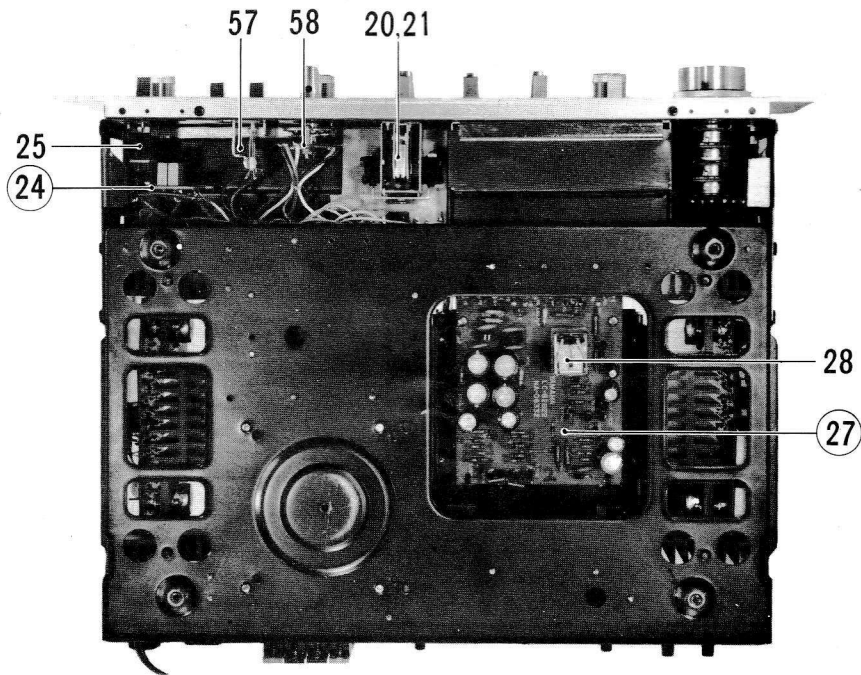
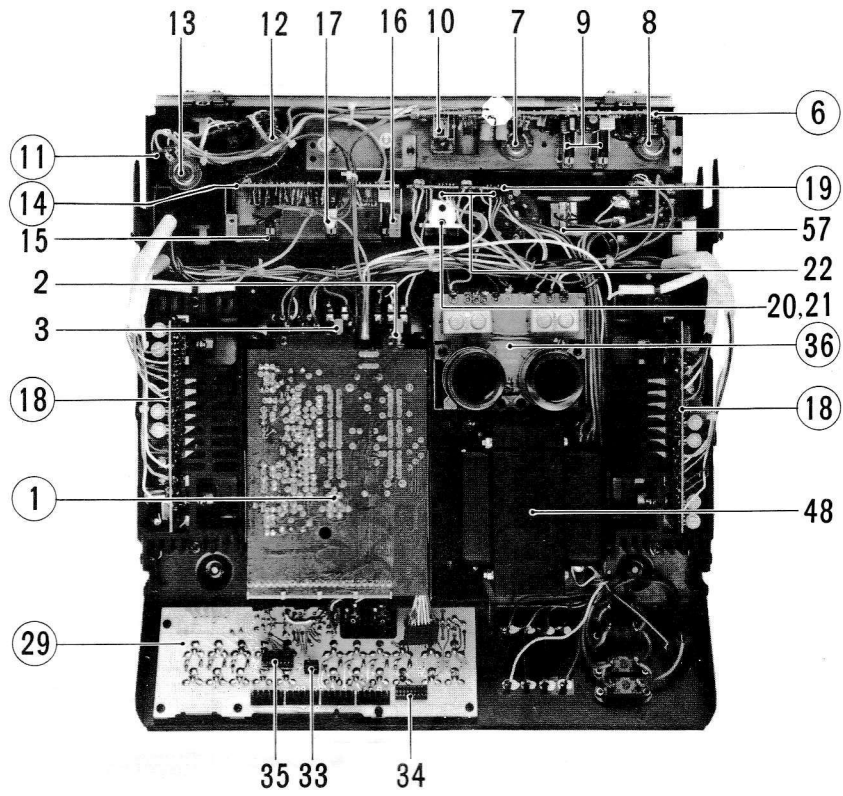
## ▼ AUSTRALIAN MODEL



● RESISTOR		● CAPACITOR			● WIRE COLOR ABBREVIATIONS	
SYMBOL	PART NAME	SYMBOL	PART NAME	REMARKS		
○—W—○	FUSE RESISTOR	⊙	MYLAR CAPACITOR	—  —	BL ▶ Black	VI ▶ Violet
△	METALIZED OXIDATION RESISTOR	NO MARK	CERAMIC CAPACITOR		BR ▶ Brown	GY ▶ Gray
□	CEMENT RESISTOR	○	POLYSTYRENE CAPACITOR	— — —	RE ▶ Red	WH ▶ White
NO MARK	CARBON RESISTOR	NO MARK	(BI-POLAR) ELECTROLYTIC CAPACITOR		OR ▶ Orange	GG ▶ Light Green
⊗	CEMENT MOLDED RESISTOR	●	LOW-NOISE ELECTROLYTIC CAPACITOR	— — —	YE ▶ Yellow	SB ▶ Light Blue
▲	METALIZED FILM RESISTOR	⊗	TANTALUM CAPACITOR		GR ▶ Green	PK ▶ Pink
					BE ▶ Blue	

# PARTS LIST





Ref. No.	Part No.	Description		Remarks	Common Models
1	32:00:00 NA:06:62:90	Function Circuit Board #65241	ファンクションボード	U.S. model (NA06341 #62914)	
	32:00:00 NA:06:62:80	-do.- #62916	"	Except U.S. model	
	42:00:00 HE:15:82:20	Low Noise Resistor (Hori. type) 220K $\Omega$ 1/4W	ローノイズ抵抗型		
	42:00:00 HE:15:84:70	-do.- 470K $\Omega$ 1/4W	"		
	42:00:00 HL:31:62:20	Metal Oxide Resistor 2.2K $\Omega$ 1W	酸化金属抵抗		
	42:00:00 HU:47:54:70	Metalized Film Resistor ( $\pm 1\%$ ) 470 $\Omega$	金属被膜抵抗		
	42:00:00 HU:47:71:50	-do.- 15K $\Omega$	"		
	42:00:00 HU:47:81:80	-do.- 18K $\Omega$	"		
	42:00:00 HW:40:44:70	Fuse Resistor 47 $\Omega$ 1/2W	ヒューズ抵抗	U.S. model (HZ00015)	
	42:00:00 HW:10:44:70	-do.- 47 $\Omega$ 100mA	"	Except U.S. model (HZ00015)	
	42:00:00 FD:19:35:00	Polystyrene Capacitor (Vert. type) $\pm 2\%$ 5000 PF	スチロロールサ		
	42:00:00 FD:18:41:80	-do.- $\pm 1\%$ 18000 PF	"		
	42:00:00 FP:12:71:00	Tantalum Capacitor 10 $\mu$ F 10WV	タンタル固体コンデンサ		
	FP:13:64:7	-do.- 4.7 $\mu$ F 16WV	"	Servicing 420000FP156470	
	42:00:00 FP:15:61:00	-do.- 1 $\mu$ F 35WV	"		
	42:00:00 FP:16:64:70	-do.- 4.7 $\mu$ F 50WV	"		
	FJ:23:74:7	Electrolytic Capacitor (Vert. type) 47 $\mu$ F 16WV	電解コンデンサ	Servicing 420000FJ137470	
	FJ:26:82:2	-do.- 220 $\mu$ F 50WV	"	-do.- 420000FJ168220	
	IC:11:66:3	Transistor 2SC 1166 (Y or GR)	トランジスタ	Servicing 420000IC116610	
	IC:13:45:3	-do.- 2SC 1345 (D or E)	"	-do.- 420000IC134540	
2	42:00:00 KA:50:02:80	Rotary Switch SRZ-065	ロータリースイッチ	TAPE	
3	42:00:00 KA:50:02:70	-do.- SRZ-066	"	FUNCTION	
4	42:00:00 LB:60:02:80	6P Connector 02145-6A	6Pコネクタ		
5	42:00:00 LB:50:00:50	5P -do.- CIS-5P	5Pコネクタ		
	32:00:00 MZ:06:35:20	Function Connector Ass'y	ファンクションコネクタアッセンブリ		
	42:00:00 LB:10:01:60	Keying Pin	禁止ピン		
6	32:00:00 NA:06:53:40	Tone Control Circuit Board # LC64071	トーンコントロールボード	Except European model	
	32:00:00 NA:06:77:30	-do.- # 65120	"	European model (NA06378 #62873)	
	42:00:00 HE:15:82:70	Low Noise Resistor 270K $\Omega$ 1/4W	ローノイズ抵抗		
	42:00:00 HE:15:83:90	-do.- 390K $\Omega$ 1/4W	"		
	42:00:00 HW:20:52:20	Fuse Resistor 220 $\Omega$ 45mA 1/2W	ヒューズ抵抗	U.S. model (HZ00014)	
	42:00:00 HW:10:52:20	-do.- 220 $\Omega$ 45mA	"	Except U.S. model (HZ00014)	
	42:00:00 FP:11:71:0	Tantalum Capacitor 10 $\mu$ F 6.3WV (20%)	タンタルサ		
	42:00:00 FP:14:61:0	-do.- 1 $\mu$ F 25WV	"		

Ref. No.	Part No.	Description	Remarks	Common Models
	42:00:00:FP:16:62:2	Tantalum Capacitor 2.2 $\mu$ F 50WV	タンタルコンデンサ	
	42:00:00:FP:16:64:7	-do.- 4.7 $\mu$ F 50WV	"	
	42:00:00:FJ:13:81:00	Electrolytic Capacitor (Vert. type) 100 $\mu$ F 16WV	電解コンデンサ	
	42:00:00:FJ:14:71:00	-do.- 10 $\mu$ F 25WV	"	
	42:00:00:FJ:16:82:20	-do.- 220 $\mu$ F 50WV	"	
	42:00:00:FJ:16:73:30	-do.- 33 $\mu$ F 50WV	"	
7.	42:00:00:HS:12:04:60	Variable Resistor 100K x 2 W/11 clicks	可変抵抗器付	TREBLE
8	42:00:00:HS:12:04:40	-do.- 100K x 2 W/11 clicks	"	BASS
	42:00:00:IC:13:45:40	Transistor 2SC1345 (D or E)	トランジスタ	
	42:00:00:IA:07:63:00	-do.- 2SA 763	"	
9	42:00:00:KA:20:01:40	Lever Switch SLA 34301	レバースイッチ	TURN OVER
10	42:00:00:KA:50:02:90	-do.- SRZ 045	"	MODE
	42:00:00:KA:20:01:60	-do.- SLA 32301	"	
11	32:00:00:NA:06:53:10	Volume Circuit Board #62862	ポリウムシート	Except U.S. model CA-1000II
	32:00:00:NA:06:62:10	-do.- #65180	"	U.S. model
12	42:00:00:HS:12:03:40	Variable Resistor B20K $\Omega$ x 2 W/11 click	ラウドネス用可変抵抗	
13	42:00:00:HS:12:04:20	-do.- IZ250K $\Omega$ x 2, 10A100K $\Omega$ x 2	ボリューム、バランス用可変抵抗	
14	32:00:00:NA:06:58:10	Filter Circuit Board # 650910	フィルターシート	U.S. model (NA06338 #62883) CA-1000
	32:00:00:NA:06:53:50	-do.- # 64090	"	Except U.S. model CA-1000II
	42:00:00:HE:15:91:0	Low Noise Resistor 1M $\Omega$	ローノイズ抵抗	
	42:00:00:HW:20:52:20	Fuse Resistor 220 $\Omega$ 45mA	ヒューズ抵抗	U.S. model (HZ00014)
	42:00:00:HW:10:52:20	-do.- 220 $\Omega$ 45mA	"	Except U.S. model (HZ00014)
	42:00:00:FP:16:62:20	Tantalum Capacitor 2.2 $\mu$ F 50WV	タンタル固体コンデンサ	
	42:00:00:FP:14:61:00	-do.- 1 $\mu$ F 25WV	"	
	42:00:00:FP:14:53:30	-do.- 0.33 $\mu$ F 25WV	"	
	42:00:00:FJ:14:61:00	Electrolytic Capacitor (Vert. type) 1 $\mu$ F 10WV	電解コンデンサ	
	42:00:00:FJ:16:82:20	-do.- 220 $\mu$ F 50WV	"	
	42:00:00:FJ:16:73:30	-do.- 33 $\mu$ F 50WV	"	
	42:00:00:IC:07:63:00	Transistor 2SC 763	トランジスタ	
	42:00:00:IC:13:45:40	-do.- 2SC 1345 (D or E)	"	
15	42:00:00:KA:20:01:20	Lever Switch SLA34302	ミュートスイッチ	
16	42:00:00:KA:20:01:40	-do.- SLA 34301	ローフィルタースイッチ	
17	42:00:00:KA:20:01:60	-do.- SLA 32301	ハイフィルタースイッチ	
18	32:00:00:NA:06:54:10	Main Circuit Board	メインシート	U.S. Canadian models
	32:00:00:NA:06:53:90	-do.- # 64282	"	General & Australian models
	32:00:00:NA:06:54:00	-do.- # 64282	"	European model
	42:00:00:HZ:00:06:30	Fireproofing Resistor 2.2 $\Omega$ 1W	不燃性抵抗	



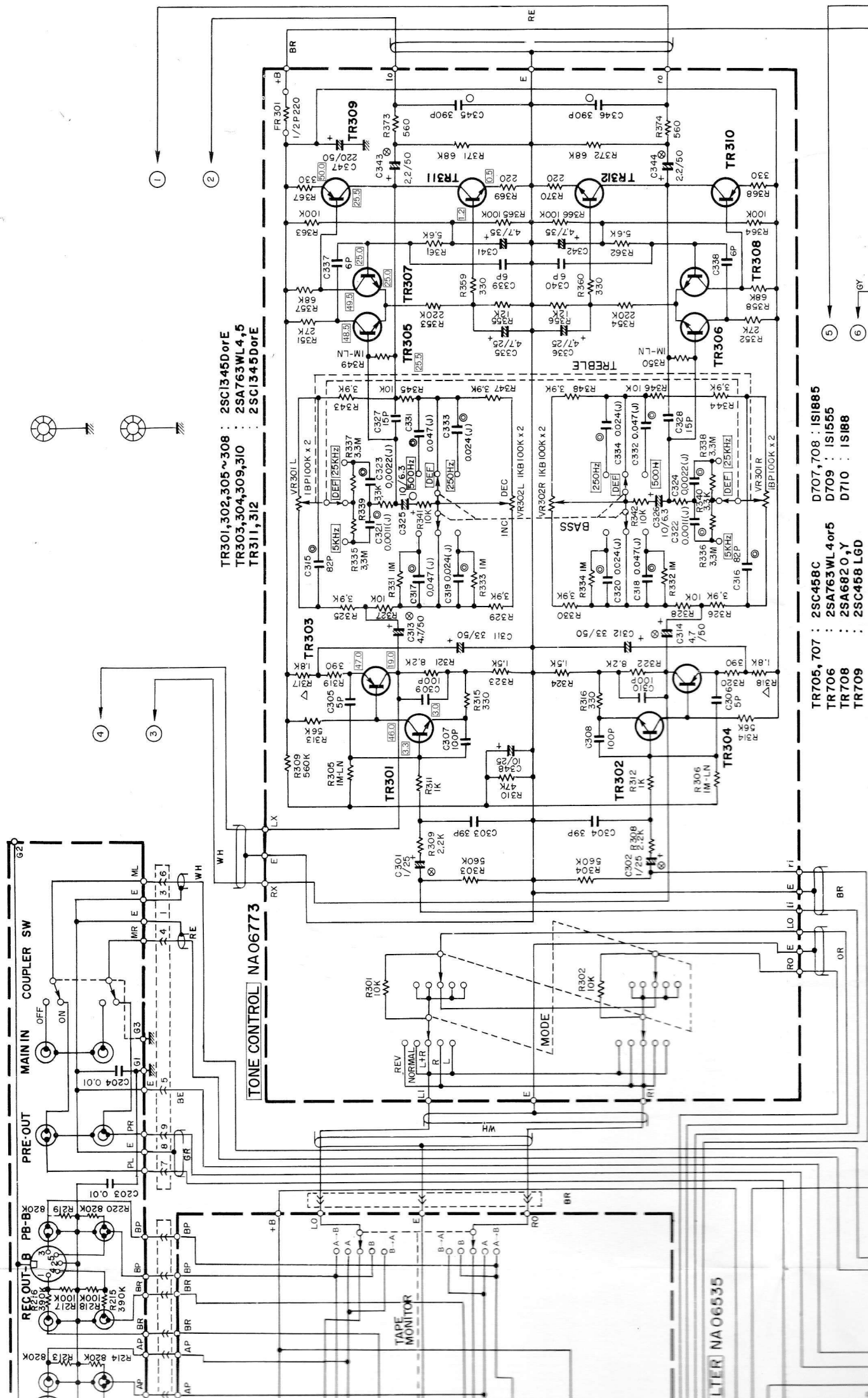
Ref. No.	Part No.	Description	Remarks	Common Models
	42:00:00 HL 41:42:20	Metal Oxide Resistor 22Ω 1W	酸化金属抵抗	
	42:00:00 HL 41:64:70	-do.- 4.7KΩ 1W	"	
	42:00:00 HL 42:64:70	-do.- 4.7KΩ 2W	"	
	42:00:00 HM 55:24:70	Cement Molded Resistor 0.47Ω 5W	セメント抵抗	
	42:00:00 HM 55:41:00	-do.- 10Ω 5W	"	
	42:00:00 FM 09:62:20	Bipolar Electrolytic Capacitor 2.2μF 16WV	バイポーラ電解コンデンサ	
	42:00:00 FM 11:74:70	-do.- 4.7μF 50WV	"	
	42:00:00 HT 41:01:50	Variable Resistor (SR-29R) B4.7KΩ	ソリッドVR	
	42:00:00 HT 41:01:60	-do.- B2.2KΩ	"	
	42:00:00 GD 90:00:50	Air-core Coild 3.0μH	空心コイル	
	42:00:00 IA 05:61:20	Transistor 2SA561 (Y)	トランジスタ	
	42:00:00 IA 07:63:00	-do.- 2SA763 (W-4.5)	"	
	42:00:00 IA 07:06:30	-do.- 2SA706 (3-2)	"	
	42:00:00 IC 04:58:90	-do.- 2SC458 (C)	"	
	42:00:00 IC 07:34:20	-do.- 2SC734 (Y)	"	
	42:00:00 IC 11:24:20	-do.- 2SC1124	"	
	42:00:00 IF 00:03:20	Diode WZ-061	ツェナーダイオード	
	42:00:00 IF 00:00:40	-do.- 1S1555	ダイオード	
	42:00:00 IH 00:02:40	-do.- 1S1885	"	
19	32:00:00 NA 06:35:40	Operation Switch Circuit Board # 63092	オペレーションスイッチシート	Except U.S. model CA-1000
	32:00:00 NA 06:59:00	-do.- # 65150	"	U.S. model (NA06354 # 63091)
20	42:00:00 KA 20:01:20	Lever Switch SLA34202	レバースイッチ	
21	42:00:00 KA 60:00:90	Micro Switch V-10-1A	マイクロスイッチ	
22	42:00:00 LB 50:00:50	5P Socket	CIS 5Pソケット	
23	42:00:00 LB 10:01:60	Keying Pin	CISキーイングピン	
24	32:00:00 NA 06:37:50	Power Switch Circuit Board # 63252	パワースイッチ	General, Canadian & Australian models CA1000 CA600
	32:00:00 NA 06:68:70	-do.- # 63252	"	European model
	32:00:00 NA 06:61:90	-do.- # 65160	"	U.S. model CA600,800 CA1000
25	42:00:00 KA 20:01:00	Power Switch JL-04	パワースイッチ	Except European model
26	42:00:00 FZ 00:01:10	Spark Killer 0.003μF x 120Ω	スパークキラー	Except European model
	42:00:00 KA 20:01:10	Power Switch JL-08	パワースイッチ	European model
27	32:00:00 NA 06:52:90	Power Supply Circuit Board # 64261	電源シート	Canadian model (# 62823) CA1000
	32:00:00 NA 06:67:90	-do.- # 65131	"	European model (# 62823) CA1000□
	32:00:00 NA 06:53:20	-do.- # 64550	"	General & Australian models CA1000□
	42:00:00 HW 11:33:90	Fuse Resistor 3.9Ω 500mA	ヒューズ抵抗	Except U.L. European models
	42:00:00 HW 20:42:20	-do.- 22Ω 150mA	"	U.L. model (HZ00015)
	42:00:00 HW 10:42:20	-do.- 22Ω 150mA	"	Except U.S. & European models
	42:00:00 HW 21:33:90	-do.- 3.9Ω 500mA	"	U.L. model
	42:00:00 HL 42:43:30	Metal Oxide Resistor 33Ω 2W	酸化金属抵抗	

Ref. No.	Part No.	Description	Remarks	Common Models
	42:00:00:HL:31:46:80	Metal Oxide Resistor 68Ω 1W	酸化金属抵抗	
	42:00:00:HL:31:52:70	-do.- 270Ω 1W	"	
	42:00:00:FM:10:81:00	Bipolar Electrolytic Capacitor 100μF 6.3WV	バイポーラケミコン	
	42:00:00:FM:11:61:00	-do.- 1μF 50WV	"	
28	42:00:00:KC:00:00:80	Relay HC-2P DC-12V	リレー	
	42:00:00:IA:07:63:00	Transistor 2SA763 (W-4, 5)	トランジスタ	
	IA:06:71:9	-do.- 2SA671S (B or C)	"	Servicing 420000IA048910
	IA:06:73:9	-do.- 2SA673S (B or C)	"	-do.- 420000IA066110
	42:00:00:IA:06:82:00	-do.- 2SA682 (Y)	"	
	IC:04:58:3	-do.- 2SC458	"	Servicing 420000IC045890
	IC:10:61:8	-do.- 2SC1061S (C or D)	"	-do.- 420000IC078910
	IC:12:13:9	-do.- 2SC1213S (B or C)	"	-do.- 420000IC116610
	42:00:00:IH:00:02:40	Diode 1S1885	ダイオード	
	IH:00:00:5	-do.- 10DC-2	"	-do.- 420000IH000140
	IH:00:01:3	-do.- 10DC-2R	"	-do.- 420000IH000150
	42:00:00:IF:00:00:40	-do.- 1S1555	"	
	42:00:00:IF:00:03:30	-do.- 1S188 FM1	"	
	42:00:00:IF:00:02:80	Zener Diode WZ-210	ツェナーダイオード	
	42:00:00:IF:00:02:20	-do.- WZ-310	"	
	42:00:00:KB:00:06:60	Miniature Fuse 400mA 250V	Sヒューズ タイムラグ	European model
29	32:00:00:NA:06:54:90	Rear Panel Circuit Board # 64560	リヤパネルシート	Except European models
	32:00:00:NA:06:77:80	-do.- # 6654	"	European model
30	42:00:00:LB:10:01:40	Pin Jack SMK S-Q3061	ピンジャック	Except European models
31	42:00:00:KA:40:02:10	Slide Switch SL222B4	スライドスイッチ	COUPLER Except European models
32	42:00:00:KA:40:02:00	-do.- SL243B3BM	"	PHONO IMP.
33	42:00:00:LB:40:00:80	Connector Socket 4P	C I S 4 P コネクタースイッチ	Except European models
34	42:00:00:LB:60:02:50	-do.- 9P	C I S 9 P コネクタースイッチ	-do.-
35	42:00:00:LB:60:02:70	6P Connecting Plug NO2183-6A	6 P コネクタ プラグ	-do.-
	42:00:00:LB:10:01:60	Keying Plug	C I S キーイング プラグ	-do.-
36	32:00:00:NA:06:54:70	Electrolytic Capacitor Circuit Board # 64300	ケミコンシート	Except U.S. model
	32:00:00:NA:06:62:50	-do.- # 65210	"	U.S. model
	42:00:00:FL:26:99:90	Electrolytic Capacitor (Lug type) 10000μF 50WV	電解コンデンサ ラゲ	
	42:00:00:IH:00:02:20	Diode S5151R (Black)	ダイオード	
	42:00:00:IH:00:02:10	-do.- S5151 (Red)	"	
37	32:00:37:22:05:00:00	Outside Case	外箱	CA600 CA800
	42:00:00:CB:06:86:30	Cord Stopper HEYCO SR-3P-4	コードストッパー	General, U.S. & Canadian models CA1000





# GENERAL SCHEMATIC DIAGRAM



TR301, 302, 305 ~ 308 : 2SC1345DoE  
 TR303, 304, 309, 310 : 2SA763WL4,r5  
 TR311, 312 : 2SC1345DoE

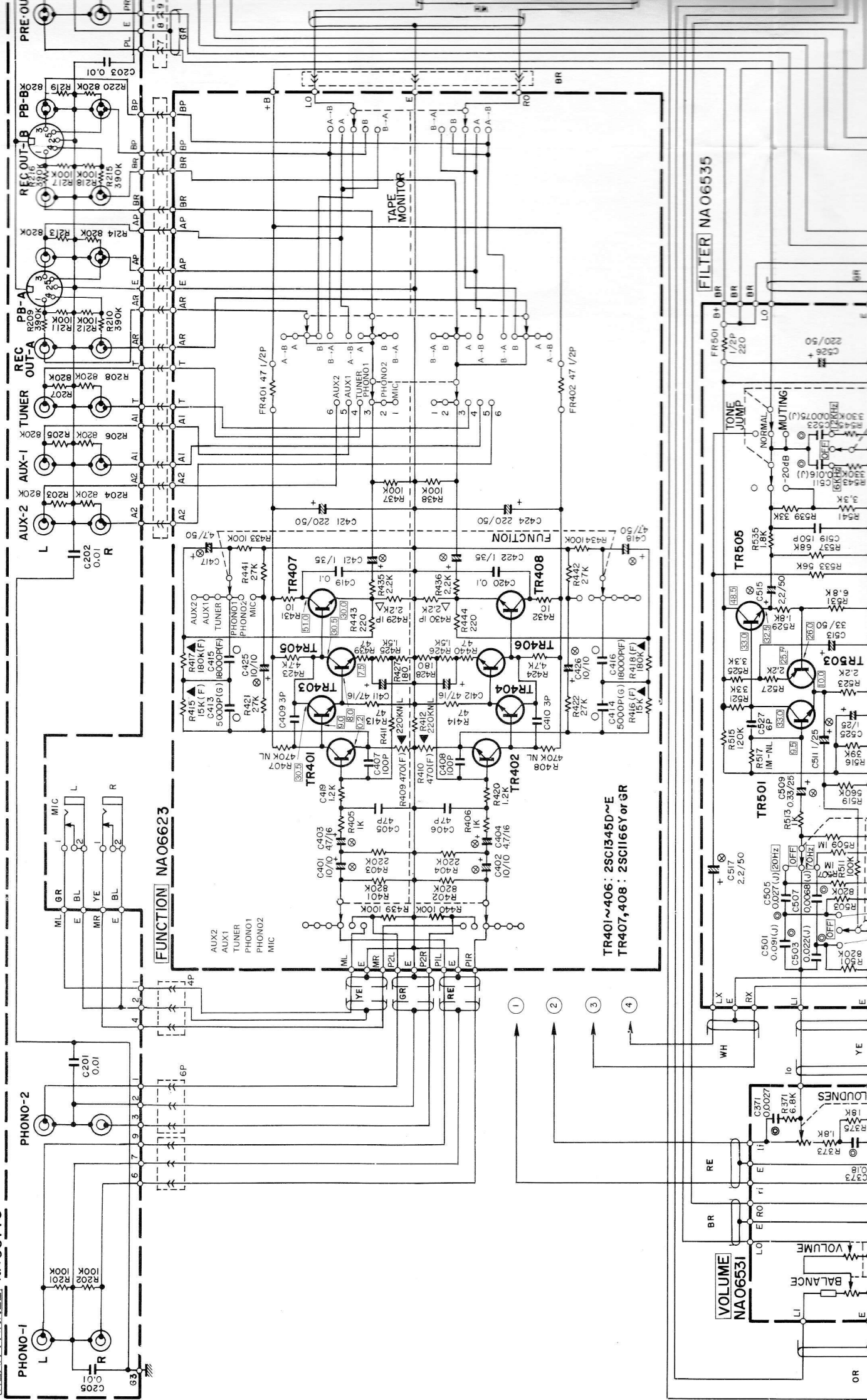
TR705, 707 : 2SC455C  
 TR706 : 2SA763WL4 or 5  
 TR708 : 2SA6820,Y  
 TR709 : 2SC455L6D

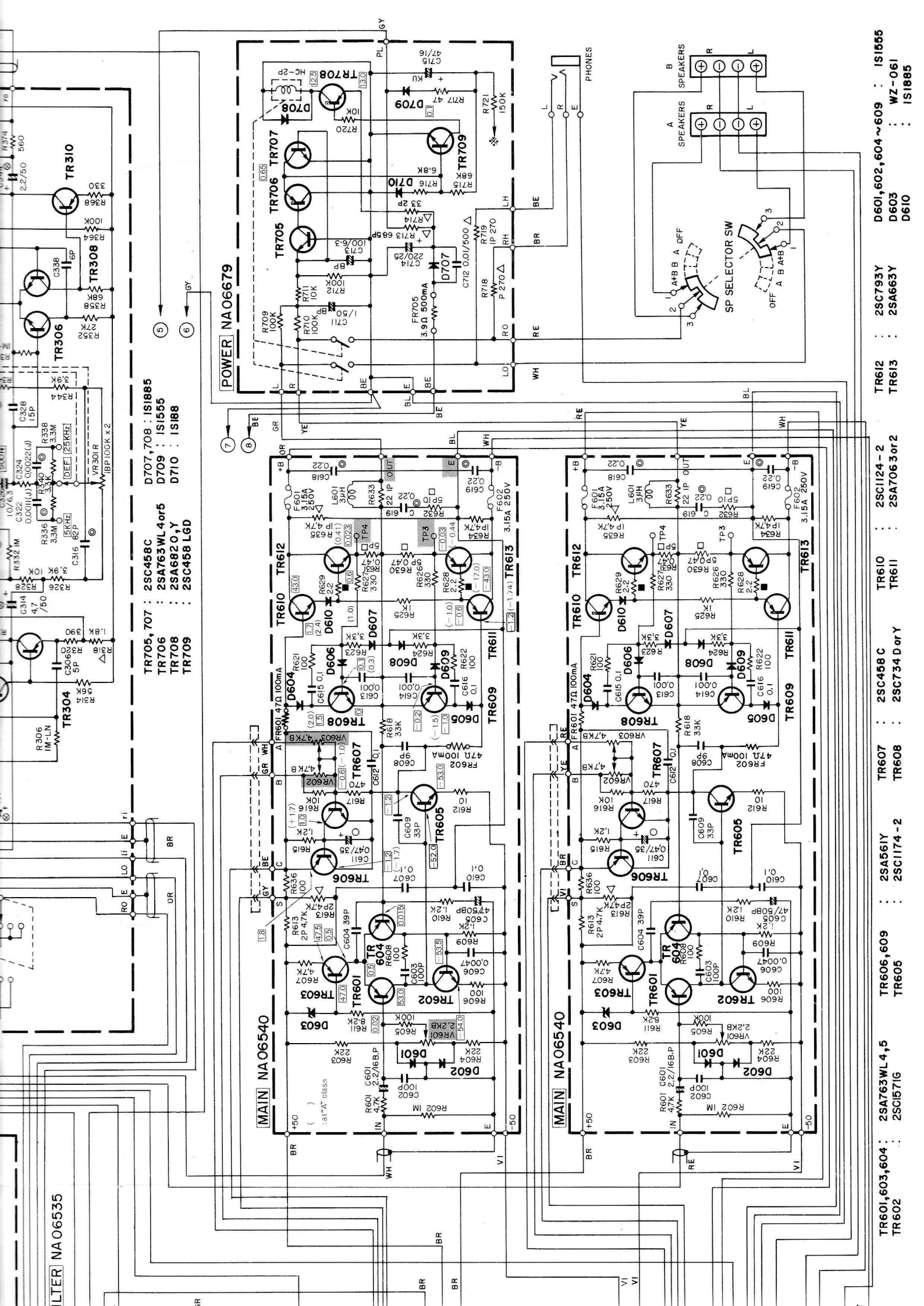
D707, 708 : IS1885  
 D709 : IS1555  
 D710 : IS188

LITER NA06535

# CA-800II OVERALL SCHEMATIC DIAGRAM

REAR PANNEL NA06778





**ALTER NA 06535**

- TR705, 707 : 2SC458C
- TR706 : 2SA763WL 4 or 5
- TR708 : 2SA6820, Y
- TR709 : 2SC458 LGD
- D707, 708 : 1S1885
- D709 : 1S1555
- D710 : 1S188

**POWER NA 06679**

**MAIN NA 06540**

**MAIN NA 06540**

- TR601, 603, 604 : 2SA763WL 4, 5
- TR602 : 2SC1571G
- TR605 : 2SA561Y
- TR606, 609 : 2SC1174 - 2
- TR607 : 2SC458 C
- TR608 : 2SC734 D or Y
- TR610 : 2SC1124 - 2
- TR611 : 2SA706 3 or 2
- TR612 : 2SC793Y
- TR613 : 2SA663Y
- TR614 : 2SC1124 - 2
- TR615 : 2SA706 3 or 2
- D601, 602, 604 ~ 609 : 1S1555
- D603 : 1S1885
- D610 : 1S1885



