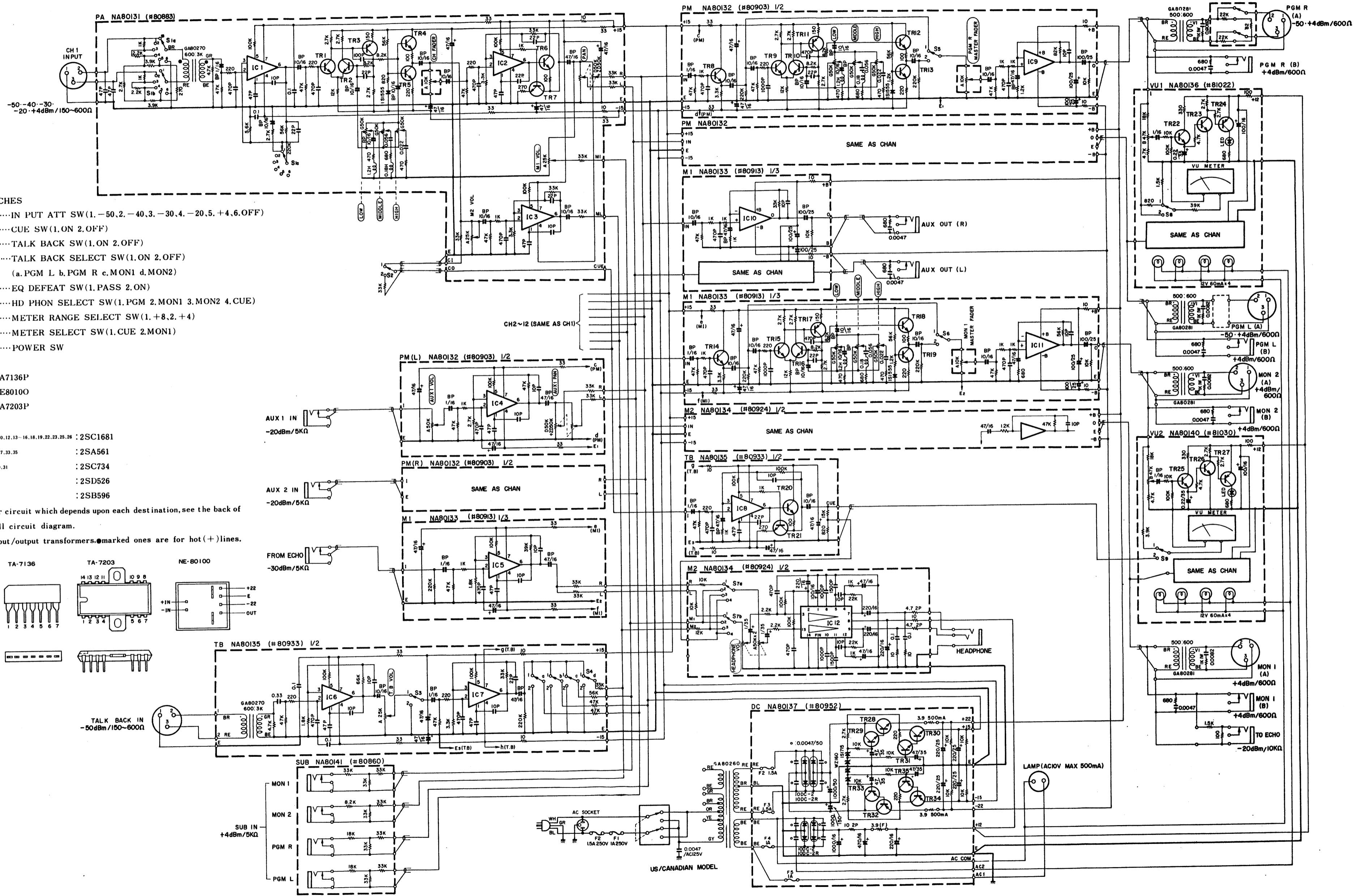


**PM-700 PAMIXR SCHEMATIC DIAGRAM**



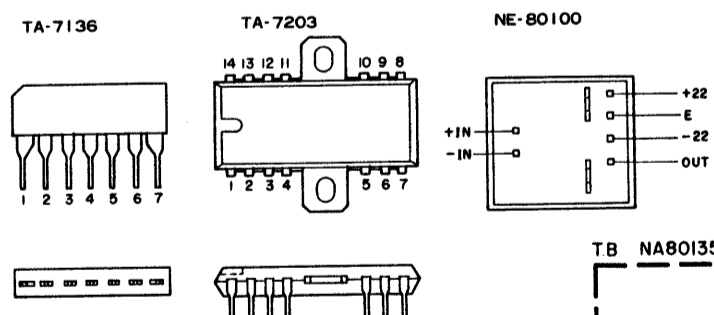
- NOTE) 1. SWITCHES**
- S<sub>1a,b,c</sub>.....IN PUT ATT SW (1. -50. 2. -40. 3. -30. 4. -20. 5. +4. 6. OFF)
  - S<sub>2</sub>.....CUE SW (1. ON 2. OFF)
  - S<sub>3</sub>.....TALK BACK SW (1. ON 2. OFF)
  - S<sub>4a,b,c,d</sub>.....TALK BACK SELECT SW (1. ON 2. OFF)  
(a. PGM L b. PGM R c. MON1 d. MON2)
  - S<sub>5,s</sub>.....EQ DEFEAT SW (1. PASS 2. ON)
  - S<sub>7a,b</sub>.....HD PHON SELECT SW (1. PGM 2. MON1 3. MON2 4. CUE)
  - S<sub>8</sub>.....METER RANGE SELECT SW (1. +8. 2. +4)
  - S<sub>9</sub>.....METER SELECT SW (1. CUE 2. MON1)
  - S<sub>10</sub>.....POWER SW

- 2. ICs**
- IC<sub>1-8</sub> : TA7136P
  - IC<sub>9-11</sub> : NE80100
  - IC<sub>12</sub> : TA7203P

- 3. TRs**
- TR<sub>1,2,4,5,8-10,12,13-16,18,19,22,23,25,26</sub> : 2SC1681
  - TR<sub>3,11,17,24,27,33,35</sub> : 2SA561
  - TR<sub>6,7,20,21,29,31</sub> : 2SC734
  - TR<sub>28,30</sub> : 2SD526
  - TR<sub>32,34</sub> : 2SB596

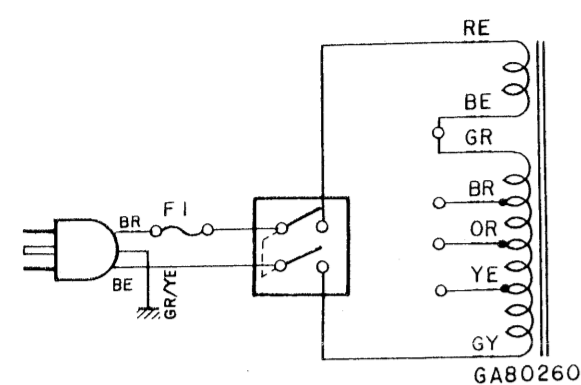
4. For power circuit which depends upon each destination, see the back of the overall circuit diagram.

5. As for input/output transformers, Ⓞ marked ones are for hot (+) lines.

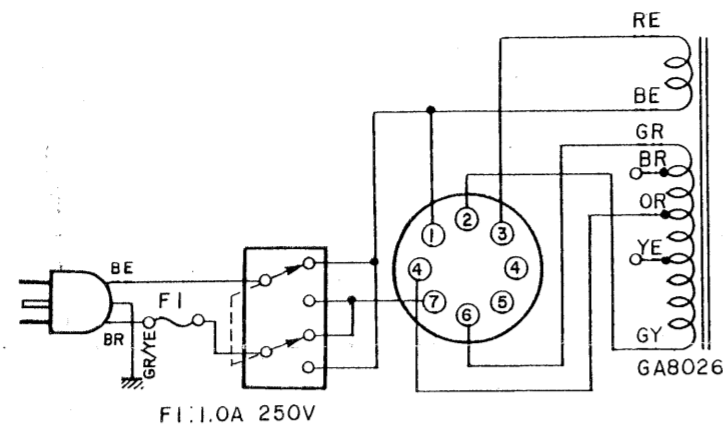


**POWER CIRUCIT ARRANGEMENTS**

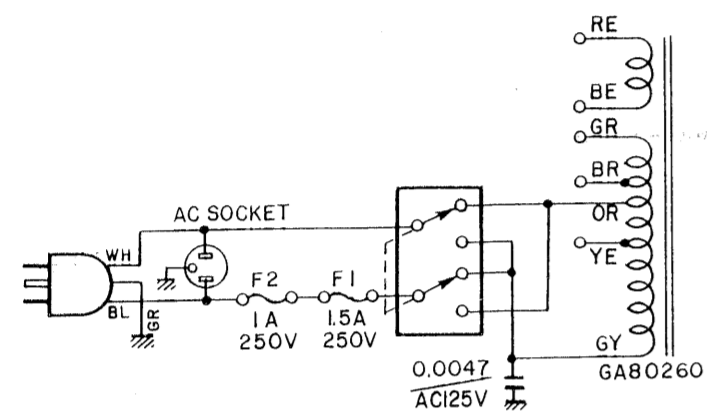
**FOR AUSTRALIAN MODEL**



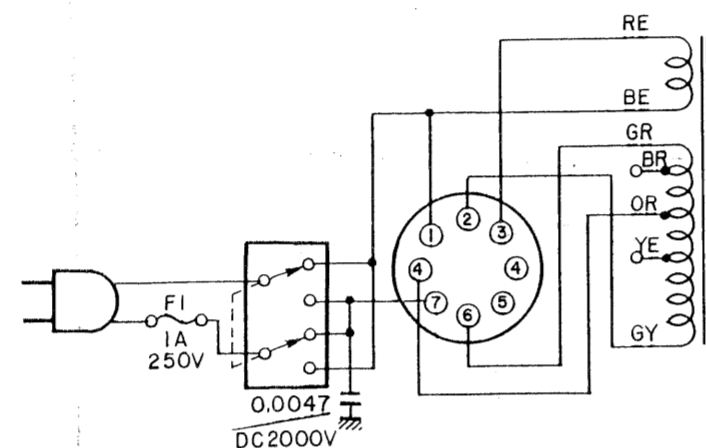
**FOR SOUTH AFRICAN MODEL**



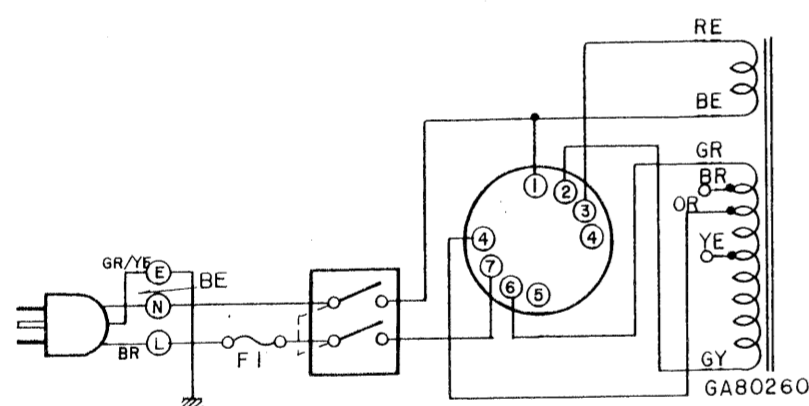
**FOR U.S./CANADIAN MODELS**



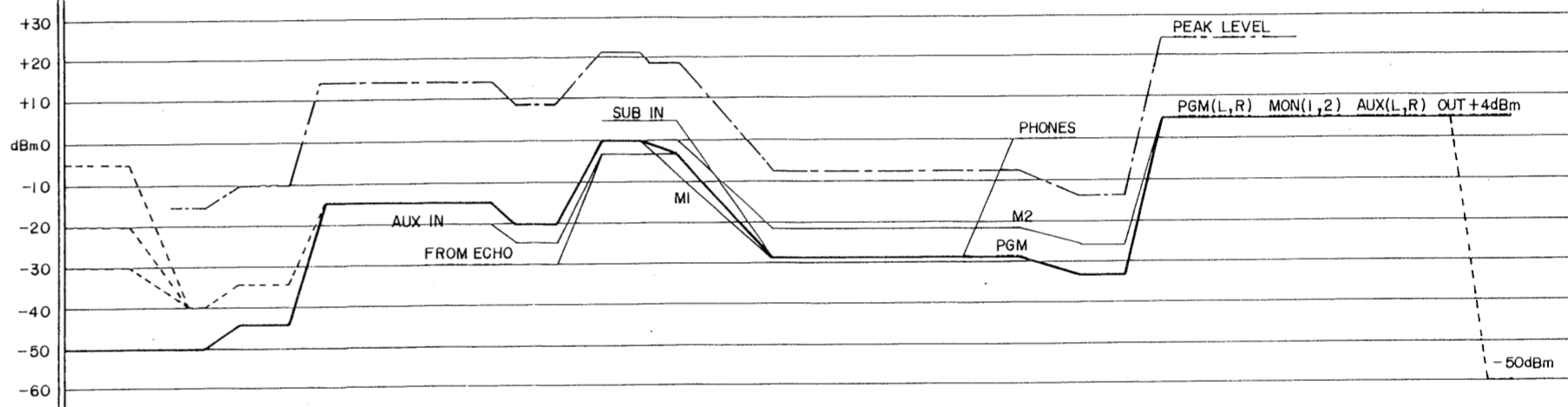
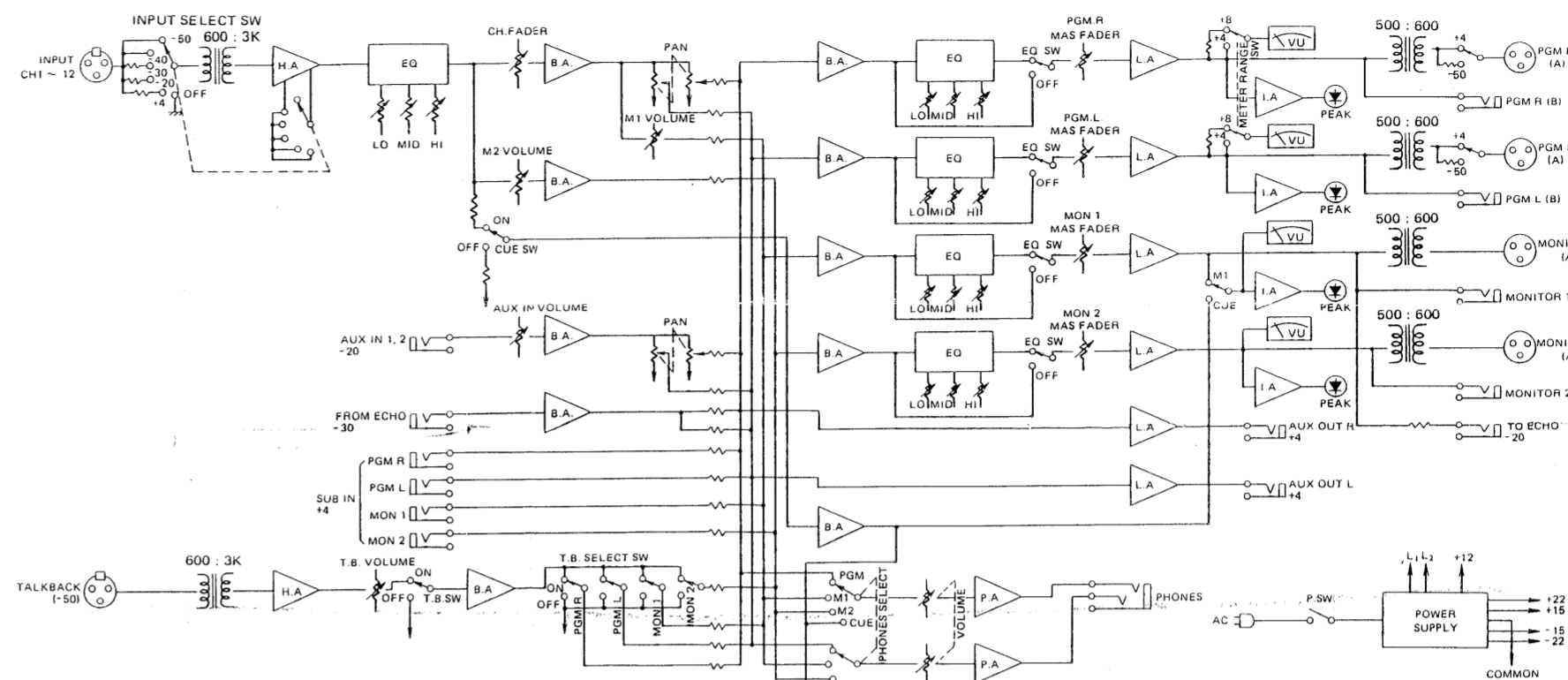
**FOR GENERAL MODEL**



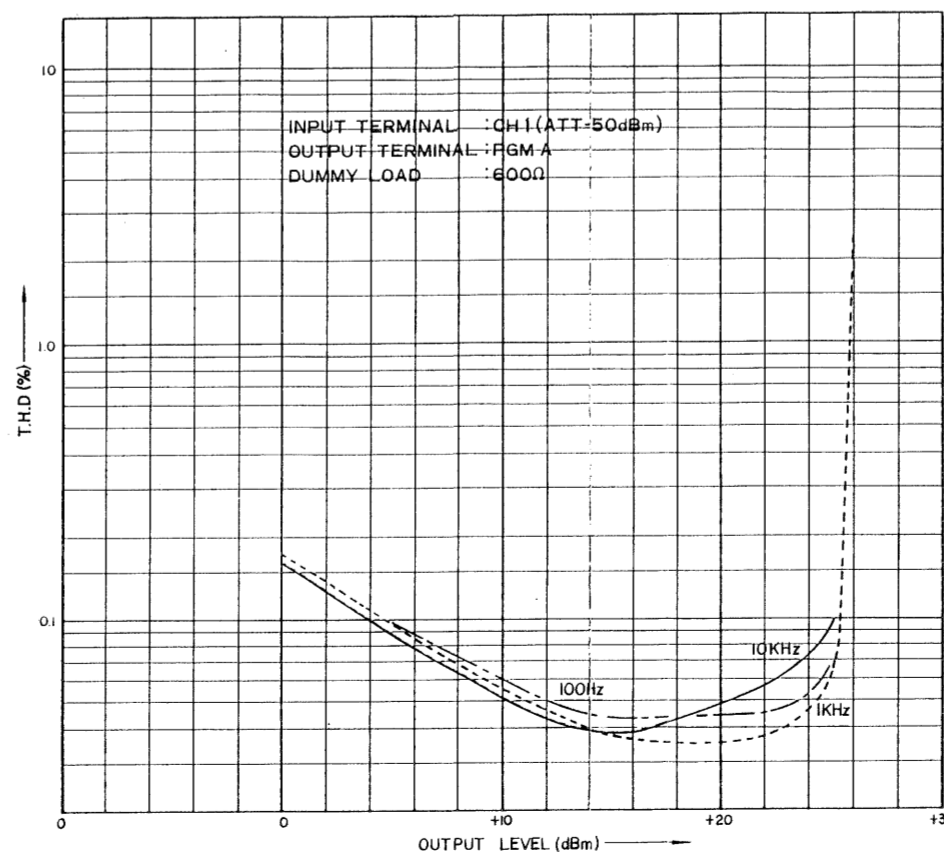
**FOR B.S./NORTH EUROPEAN MODELS**



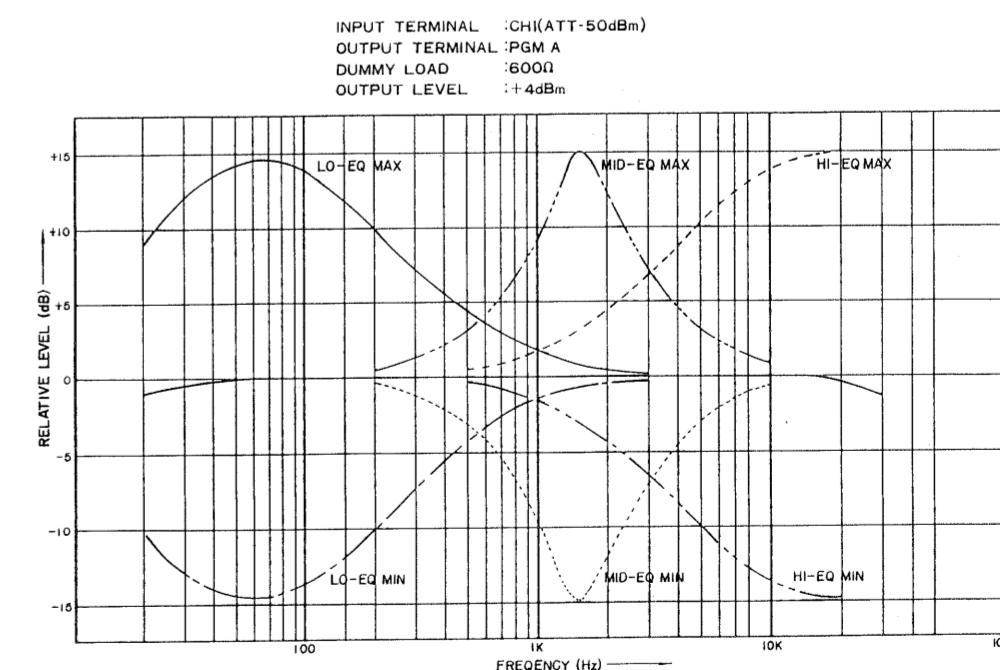
**BLOCK & LEVEL DIAGRAM**



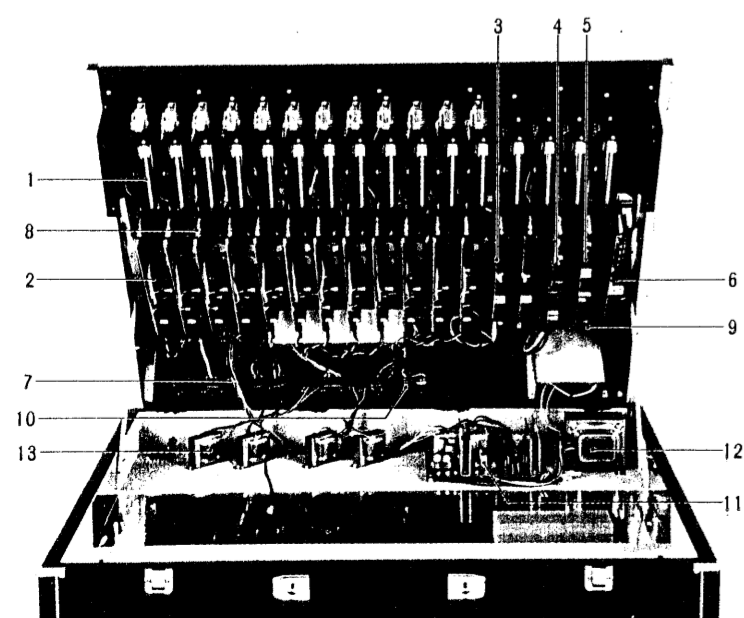
**TOTAL HARMONIC DISTORTION**



**TYPICAL FREQUENCY RESPONSE**



**Circuit Board Arrangement is Compornents.**



- 1. 401000HQ500020 Fader 75 m/m x 16
  - 2. 305400NA801310 PA Circuit Board x 2
  - 3. 305400NA801320 PM Circuit Board x 2
  - 4. 305400NA801330 M1 Circuit Board
  - 5. 305400NA801340 M2 Circuit Board
  - 6. 305400NA801350 TB Circuit Board
  - 7. 305400NA801420 OUT Circuit Board
  - 8. 305400NA801440 J2 Circuit Board
  - 9. 305400NA801430 J1 Circuit Board
  - 10. 305400NA801450 SW Circuit Board
  - 11. 305400NA801370 DC Circuit Board
  - 12. 401000GA802600 Power Transformer
  - 13. 401000GA802810 Output Transformer
- 305400NA801400 SUB Circuit Board
  - 305400NA801360 VU1 Circuit Board
  - 305400NA801400 VU2 Circuit Board
  - 401000Ji000390 (Big) VU Meter
  - 401000Ji000400 (Small) VU Meter
  - 401000MZ801650 LED Ass'y
  - 401000LB300150 Cannon Connector Socket XLR3-31
  - 401000LB300160 Cannon Connector Socket XLR3-32
  - 401000GA802700 Input Transformer

PM-700 PAMIXR SCHEMATIC DIAGRAM

NOTE) 1. SWITCHES

- S<sub>1a, b, c</sub>.....IN PUT ATT SW(1.-50.2.-40.3.-30.4.-20.5.+4.6.OFF)
- S<sub>2</sub>.....CUE SW(1.ON 2.OFF)
- S<sub>3</sub>.....TALK BACK SW(1.ON 2.OFF)
- S<sub>4a, b, c, d</sub>.....TALK BACK SELECT SW(1.ON 2.OFF)  
(a. PGM L b. PGM R c. MON1 d. MON2)
- S<sub>5, 6</sub>.....EQ DEFEAT SW(1.PASS 2.ON)
- S<sub>7a, b</sub>.....HD PHON SELECT SW(1.PGM 2.MON1 3.MON2 4.CUE)
- S<sub>8</sub>.....METER RANGE SELECT SW(1.+8.2.+4)
- S<sub>9</sub>.....METER SELECT SW(1.CUE 2.MON1)
- S<sub>10</sub>.....POWER SW

2. ICs

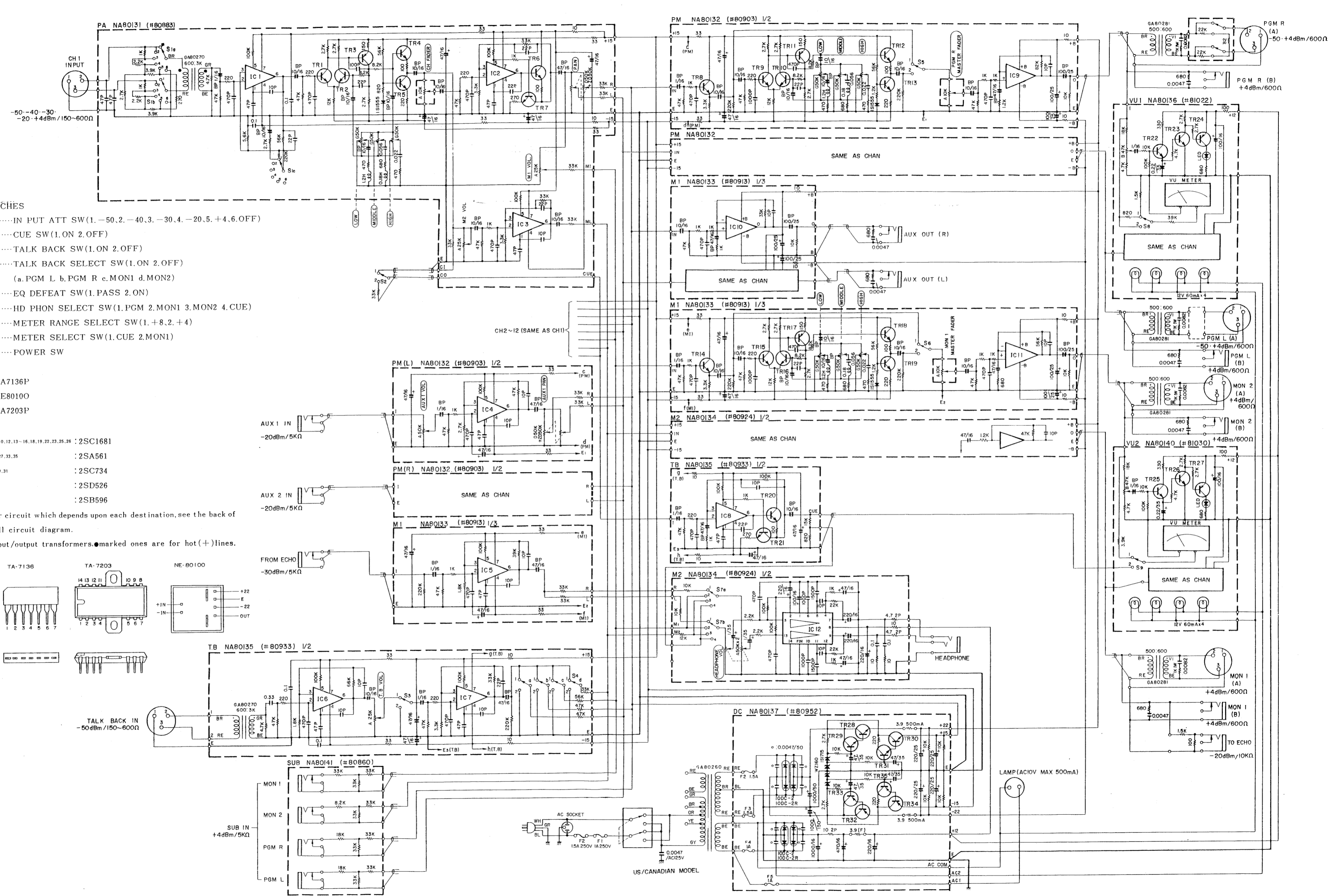
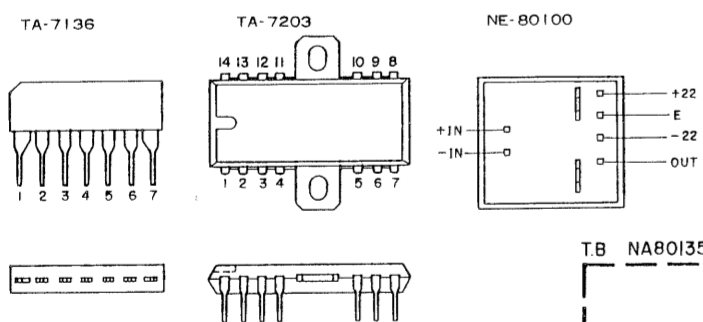
- IC<sub>1-8</sub> : TA7136P
- IC<sub>9-11</sub> : NE80100
- IC<sub>12</sub> : TA7203P

3. TRs

- TR<sub>1, 2, 4, 5, 8-10, 12, 13-16, 18, 19, 22, 23, 25, 26</sub> : 2SC1681
- TR<sub>3, 11, 17, 24, 27, 33, 35</sub> : 2SA561
- TR<sub>6, 7, 20, 21, 29, 31</sub> : 2SC734
- TR<sub>28, 30</sub> : 2SD526
- TR<sub>32, 34</sub> : 2SB596

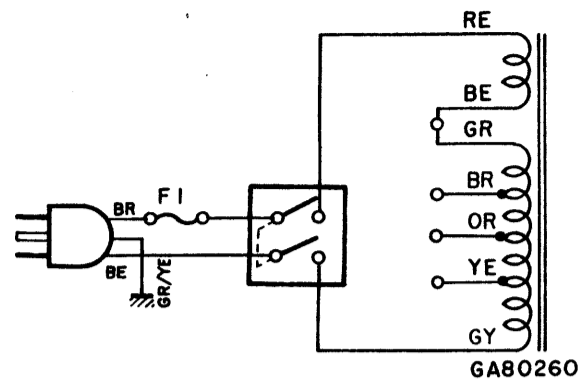
4. For power circuit which depends upon each destination, see the back of the overall circuit diagram.

5. As for input/output transformers, marked ones are for hot(+) lines.

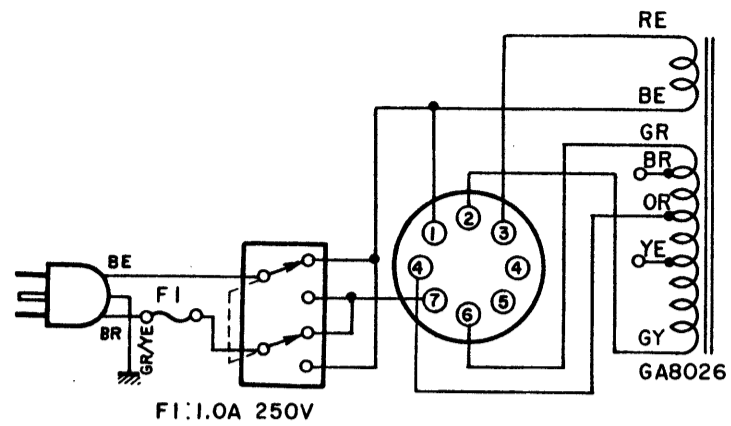


**POWER CIRCUIT ARRANGEMENTS**

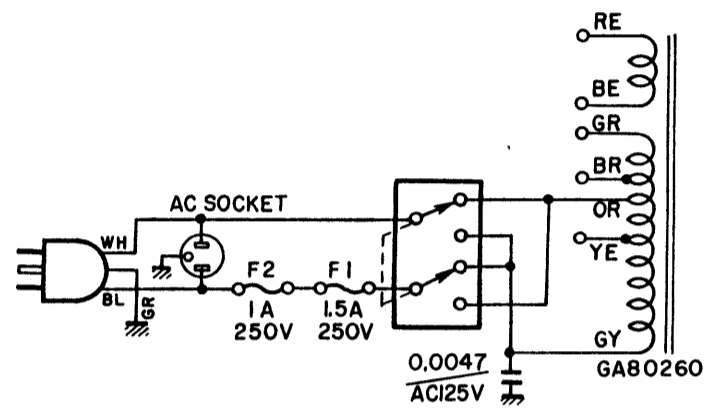
**FOR AUSTRALIAN MODEL**



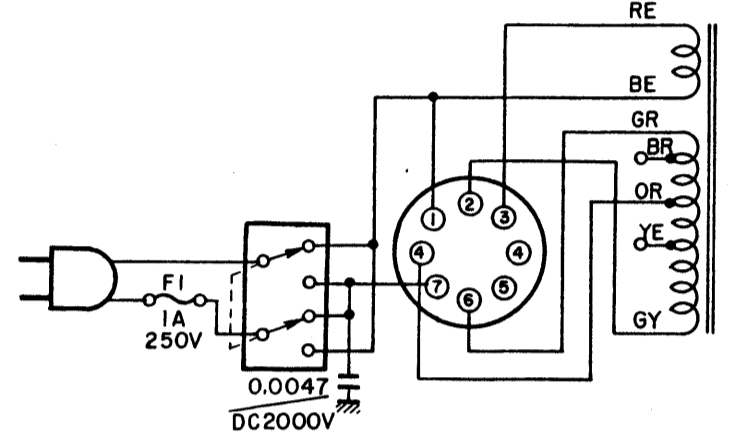
**FOR SOUTH AFRICAN MODEL**



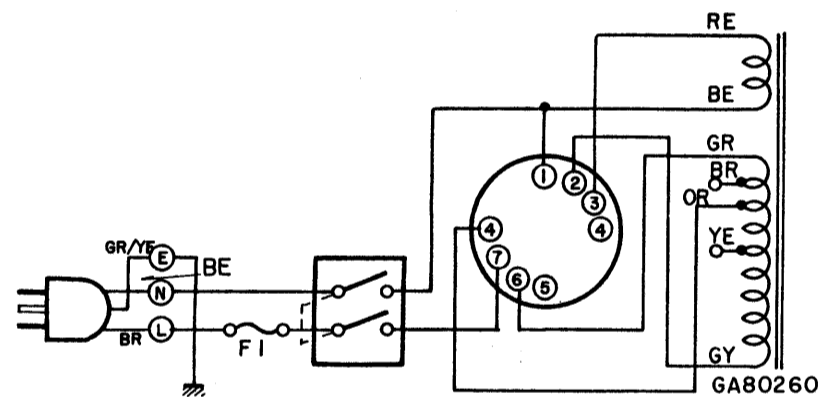
**FOR U.S./CANADIAN MODELS**



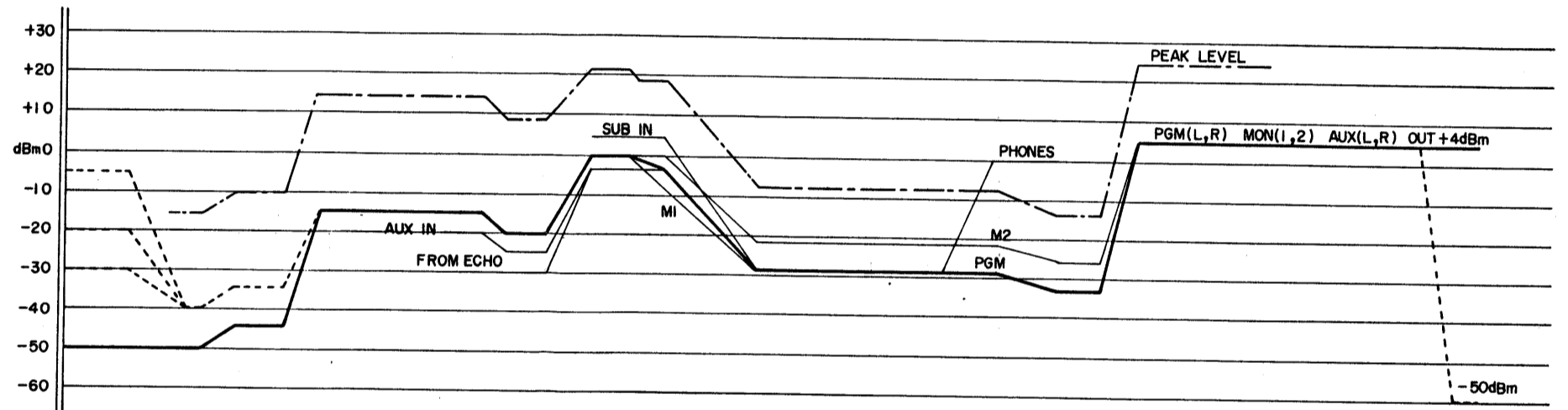
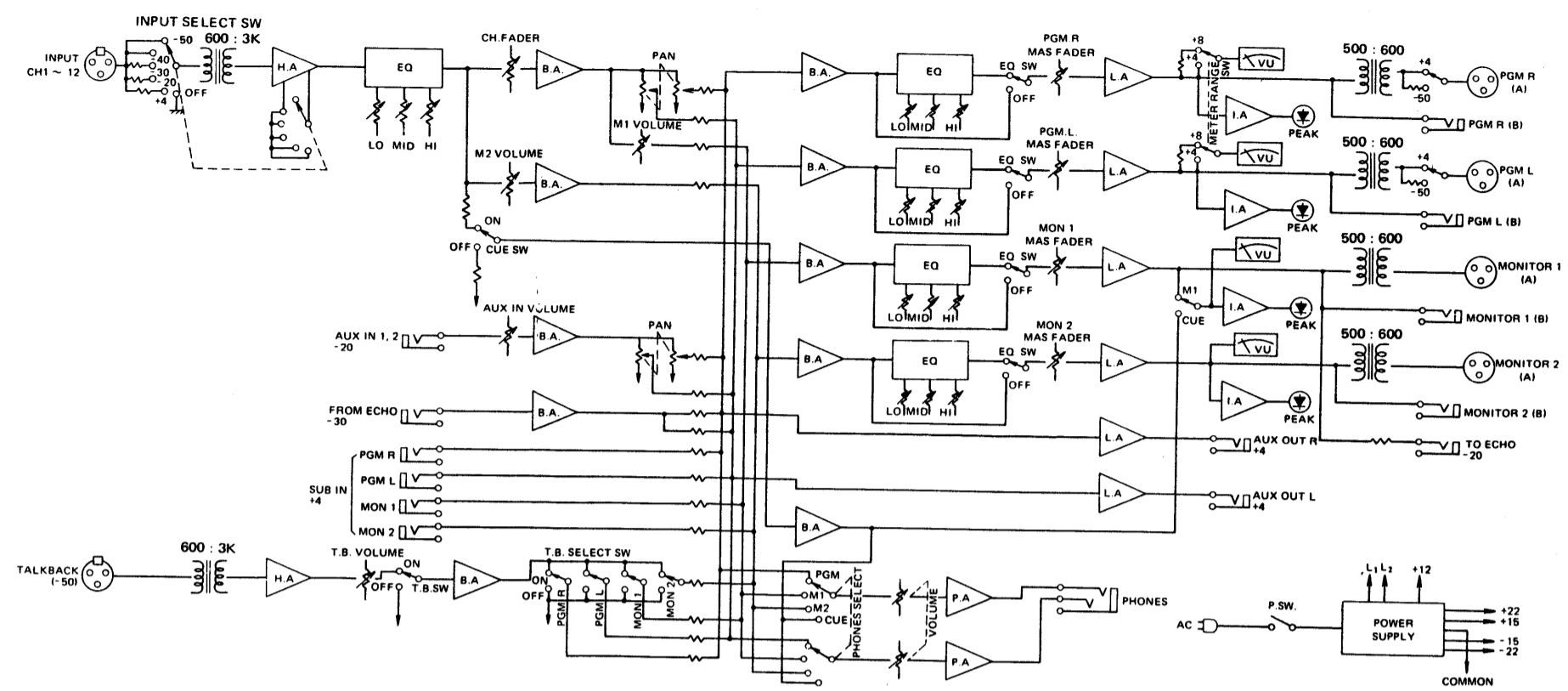
**FOR GENERAL MODEL**



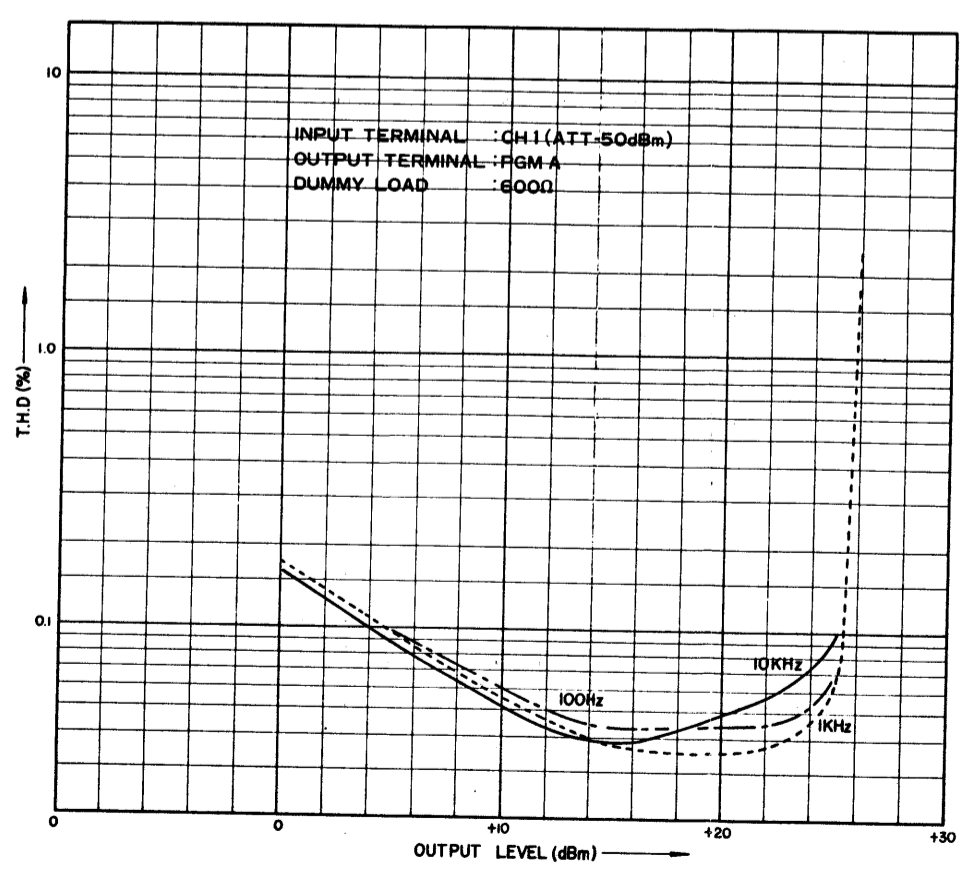
**FOR B.S./NORTH EUROPEAN MODELS**



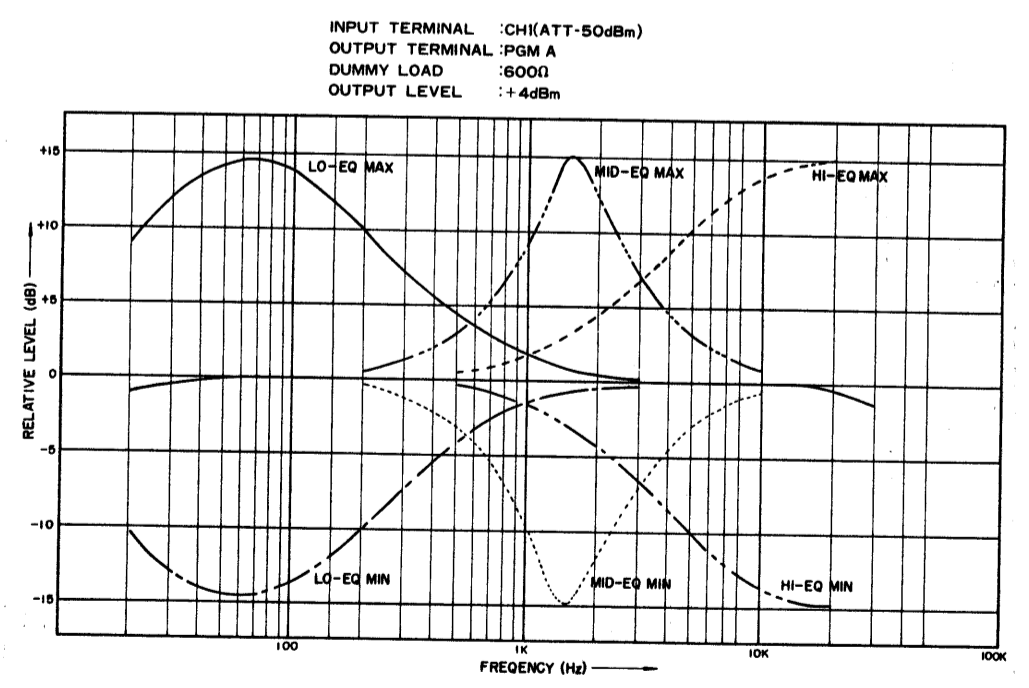
**BLOCK & LEVEL DIAGRAM**



**TOTAL HARMONIC DISTORTION**



**TYPICAL FREQUENCY RESPONSE**



**Circuit Board Arrangement is Components.**

1.	401000HQ500020	Fader 75 m/m x 16
2.	305400NA801310	PA Circuit Board x 12
3.	305400NA801320	PM Circuit Board x 2
4.	305400NA801330	M1 Circuit Board
5.	305400NA801340	M2 Circuit Board
6.	305400NA801350	TB Circuit Board
7.	305400NA801420	OUT Circuit Board
8.	305400NA801440	J2 Circuit Board
9.	305400NA801430	J1 Circuit Board
10.	305400NA801450	SW Circuit Board
11.	305400NA801370	DC Circuit Board
12.	401000GA802600	Power Transformer
13.	401000GA802810	Output Transformer
	305400NA801400	SUB Circuit Board
	305400NA801360	VU1 Circuit Board
	305400NA801400	VU2 Circuit Board
	401000J1000390	(Big) VU Meter
	401000J1000400	(Small) VU Meter
	401000MZ801650	LED Ass'y
	401000LB300150	Cannon Connector Socket XLR3-31
	401000LB300160	Cannon Connector Socket XLR3-32
	401000GA802700	Input Transformer