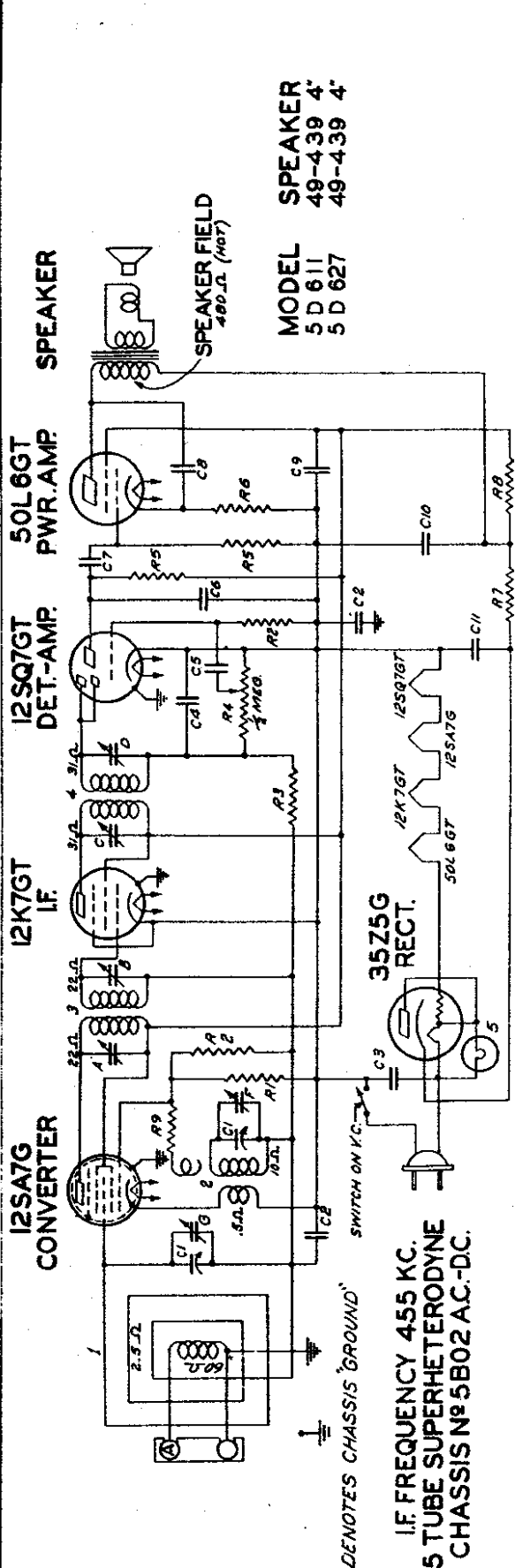


MODELS 5D611, 5D2611,
5D627, Ch. 5B02

ZENITH RADIO CORP.



SPEAKER
MODEL 5 D 611
5 D 627
SPEAKER 49-439 4"
SPEAKER 49-439 4"

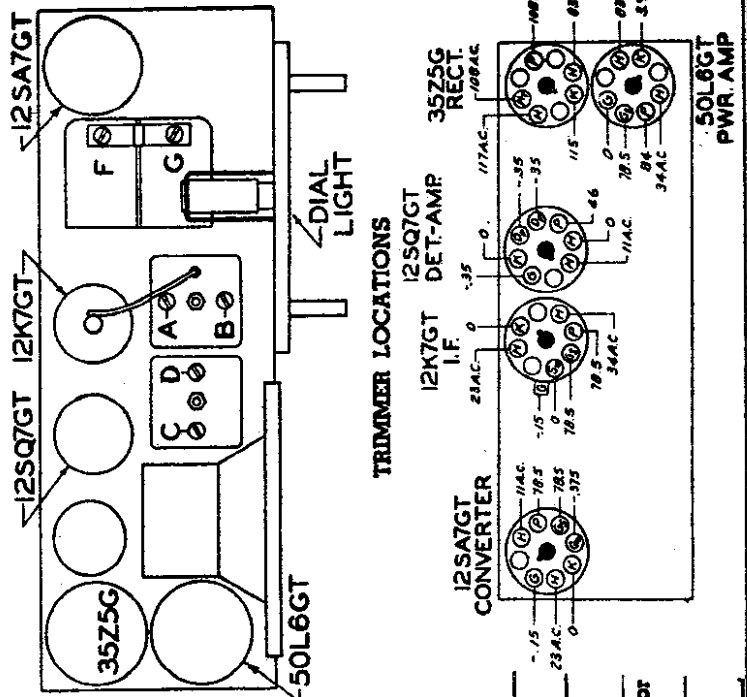
I.F. FREQUENCY 455 KC.
5 TUBE SUPERHETERODYNE
CHASSIS NO. 5B02 AC-DC.

DIAG. PART NO.	PART NO.	DESCRIPTION	DIAG. PART NO.	PART NO.	DESCRIPTION
C1	22-206	TWO-GANG VARIABLE	2	S 9450	OSC. COIL ASSEMBLY
C2	22-859	.05 MFD.	3	95-696	1ST I.F. TRANS.
C3	22-1071	.05 MFD.	4	95-794	2ND I.F. TRANS.
C4	22-953	.0005 MFD.	5	100-67	PILOT LIGHT 6.3 V. .15A.
C5	22-428	.002 MFD.	A		1ST I.F. TRANS. PRI.
C6	22-854	.0005 MFD.	B		1ST I.F. TRANS. SEC.
C7	22-243	.01 MFD.	C		2ND I.F. TRANS. PRI.
C8	22-1182	.01 MFD.	D		2ND I.F. TRANS. SEC.
C9	22-1182	.01 MFD.	E		BROADCAST OSC. (ON GANG)
C10	22-1186	30 MFD. ELECTROLYTIC	F		BROADCAST ANT. (ON GANG)
C11		30 MFD.	G		
R1	63-589	10 M. OHM			
R2	63-576	15 MEGOHM			
R3	63-600	2.2 MEGOHM			
R4	63-1112	VOLUME CONTROL			
R5	63-597	470 M. OHM			
R6	63-1171	75 OHM WIREWOUND			
R7	63-1172	100 OHM WIREWOUND			
R8	63-1173	1500 OHM			
R9	63-579	220 OHM			
					WAVEMAGNET ASSEMBLY

Stage Grains:

- Bc. and 455 Kc. I.F.
- Ant. to Conv. grid 7X at 1000 Kc.
- Conv. grid to I.F. grid 74X at 455 Kc.
- Overall audio 225X at .05 watt. 400 cycles.

- Volume control full on.
- Line voltage 117 A.C. or D.C.
- Power consumption 29 watts.
- Power output 1.3 watts.
- Tuning Ranges 540 Kc to 1620 Kc.



Operation	Connect Test Oscillator to	Dummy Antenna	Input Signal Frequency	Band	Set Dial At	Trimmers	Purpose
1	Converter Grid	.1 mfd.	455 Kc.	—	600 Kc.	A, B, C, D	Align I. F.
2	Single Turn Loop coupled loosely to	—	1500 Kc.	—	1500 Kc.	F	Set Oscillator to Scale
3	Wave Magnet	—	1500 Kc.	—	1500 Kc.	G	Adjust for Maximum