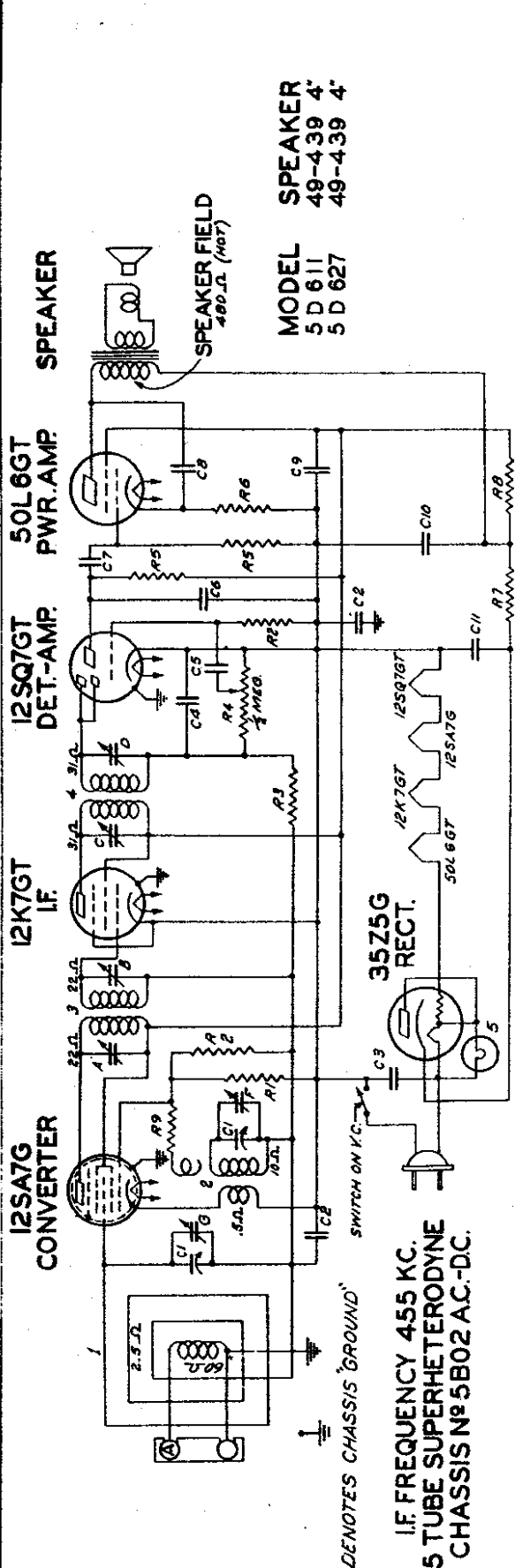


MODELS 5D611, 5D2611,
5D627, Ch. 5B02

ZENITH RADIO CORP.



SPEAKER
MODEL 5 D 611 49-439 4"
5 D 627 49-439 4"

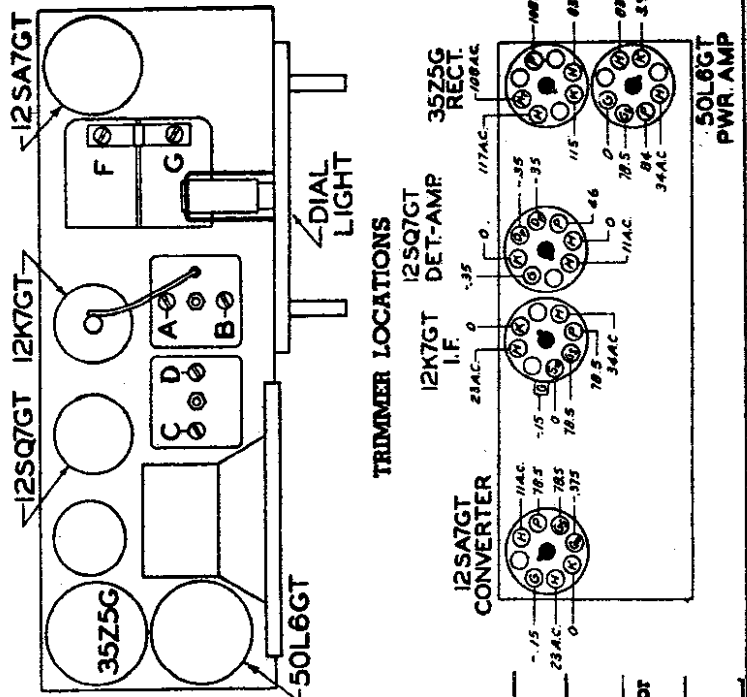
I.F. FREQUENCY 455 KC.
5 TUBE SUPERHETERODYNE
CHASSIS No 5B02 AC-DC.

| DIAG. PART NO. | PART NO. | DESCRIPTION | DIAG. PART NO. | PART NO. | DESCRIPTION |
|----------------|----------|----------------------|----------------|----------|--------------------------|
| C1 | 22-206 | TWO-GANG VARIABLE | 2 | S 9450 | OSC. COIL ASSEMBLY |
| C2 | 22-859 | .05 MFD. | 3 | 95-696 | 1ST I.F. TRANS. |
| C3 | 22-1071 | .05 MFD. | 4 | 95-794 | 2ND I.F. TRANS. |
| C4 | 22-953 | .0005 MFD. | 5 | 100-67 | PILOT LIGHT 6.3 V. .15A |
| C5 | 22-428 | .002 MFD. | A | | 1ST I.F. TRANS. PRI. |
| C6 | 22-854 | .0005 MFD. | B | | 1ST I.F. TRANS. SEC. |
| C7 | 22-243 | .01 MFD. | C | | 2ND I.F. TRANS. PRI. |
| C8 | 22-1182 | .01 MFD. | D | | 2ND I.F. TRANS. SEC. |
| C9 | 22-1182 | .01 MFD. | E | | BROADCAST OSC. (ON GANG) |
| C10 | 22-1186 | 30 MFD. ELECTROLYTIC | F | | BROADCAST ANT. (ON GANG) |
| C11 | 22-1186 | 30 MFD. | G | | WAVE-MAGNET ASSEMBLY |

Stage Grains:

- Bc. and 455 Kc. I.F.
- Ant. to Conv. grid 7X at 1000 Kc.
- Conv. grid to I.F. grid 74X at 455 Kc.
- Overall audio 225X at .05 watt. 400 cycles.

- Volume control full on.
- Line voltage 117 A.C. or D.C.
- Power consumption 29 watts.
- Power output 1.3 watts.
- Tuning Ranges 540 Kc to 1620 Kc.



| Operation | Connect Test Oscillator to | Dummy Antenna | Input Signal Frequency | Band | Set Dial At | Trimmers | Purpose |
|-----------|-------------------------------------|---------------|------------------------|------|-------------|------------|-------------------------|
| 1 | Converter Grid | .1 mfd. | 455 Kc. | — | 600 Kc. | A, B, C, D | Align I. F. |
| 2 | Single Turn Loop coupled loosely to | — | 1500 Kc. | — | 1500 Kc. | F | Set Oscillator to Scale |
| 3 | Wave Magnet | — | 1500 Kc. | — | 1500 Kc. | G | Adjust for Maximum |