

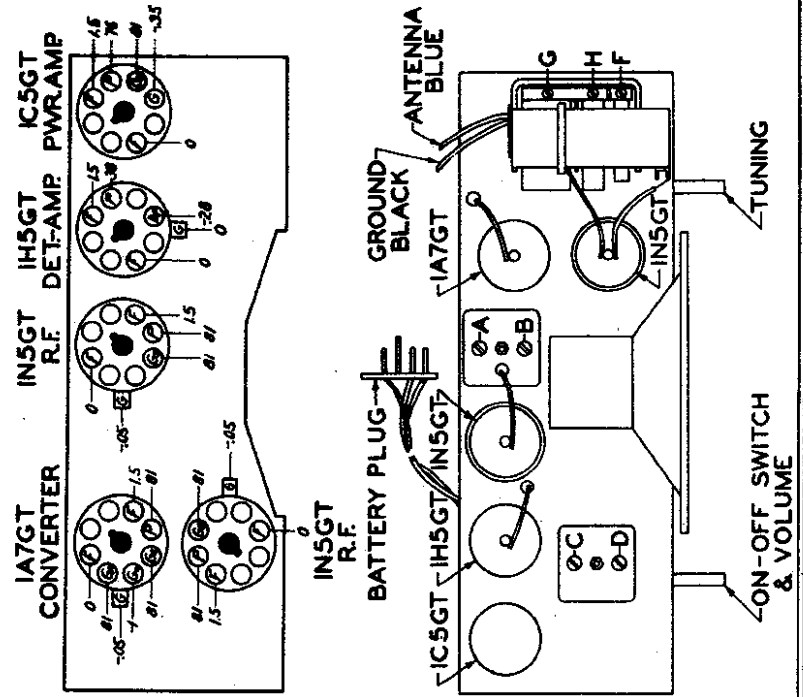
I.F. FREQUENCY 455 KC.
5 TUBE SUPERHETERODYNE
CHASSIS N^o 5B04-1½V.-SINGLE BAND

DIAG. PART NO.	DESCRIPTION	QTY	PART NO.	DESCRIPTION	DIAL NO.	PART NO.	DESCRIPTION
C1	22-10M THREE GANG VARIABLE	1	R5	45K	A	1A7GT	CONVERTER
C2	.05 MFD.	1	R6	45K	B	1N5GT	R.F.
C3	.001 MFD.	1	R7	45K	C	1N5GT	I.F.
C4	.001 MFD. ELECTROLYTIC	1	R8	45K	D	1H5GT	DET-AMP
C5	.001 MFD.	1	R9	45K		1C5GT	PWR-AMP
C6	.001 MFD.	1	R10	45K			
C7	.001 MFD.	1	R11	45K			
C8	.001 MFD.	1	R12	45K			
C9	.001 MFD.	1	R13	45K			
C10	.001 MFD.	1	R14	45K			
R1	500 OHM	1	R15	45K			
R2	500 OHM	1	R16	45K			
R3	100 OHM	1	R17	45K			
R4	100 OHM	1	R18	45K			

Slave Gains
Bc. and I.F.

Ant. to R.F. grid 10.7X at 1000 Kc.
R.F. grid to conv. grid 3.25X at 1000 Kc.
Conv. grid to I.F. grid 40X at 455 Kc.
Overall audio 366X at .05 watt, 400 cycles.

Volume control full on.
Battery Z28.
Power consumption 1.3 watts.
Power output .270 watts.
Tuning Range
540 Kc. to 1620 Kc.



Operation	Connect Test Oscillator to	Dummy Antenna	Input Signal Frequency	Band	Set Dial At	Adjust Trimmers	Purpose
1	Converter Grid	½ Mfd.	455 Kc.	Broadcast	600 Kc.	A, B, C, D	I. F. Alignment
2	Ant.—Grid.	200 Mmf.	1500 Kc.	Broadcast	1500 Kc.	F	Set Oscillator to Scale
3	"	200 Mmf.	1400 Kc.	Broadcast	1400 Kc.	H, G	Align R.F. & Ant.