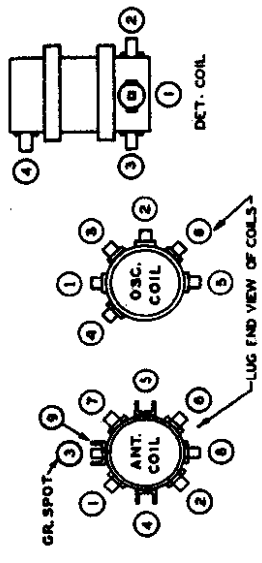


ANT. 5.5X AT 800 KC.
4.5X AT 800 KC.
60X FROM 600 KC. TO 455 KC.
90X FROM 455 KC. TO 400 KC.
15X AT 400 KC.
.050 WATT OUTPUT
3Q5GT PWR. AMP.
ILDS DET. AMP.
1N5GT I.F.
1A7G CONVERTER
1N5GT R.F.

BOTTOM VIEW OF TUBE SOCKETS.

ALL VOLTAGES MEASURED FROM COMMON RETURN TO POINTS INDICATED WITH A D.C. VACUUM TUBE VOLTMETER.



TUNING RANGE 540-1820 KC.
TUNING RANGE 1780-8750 KC.
TUNING RANGE 8450-16400 KC.
I.F. FREQUENCY 455 KC.

ALL RESISTORS 220% TOLERANCE UNLESS OTHERWISE SPECIFIED.

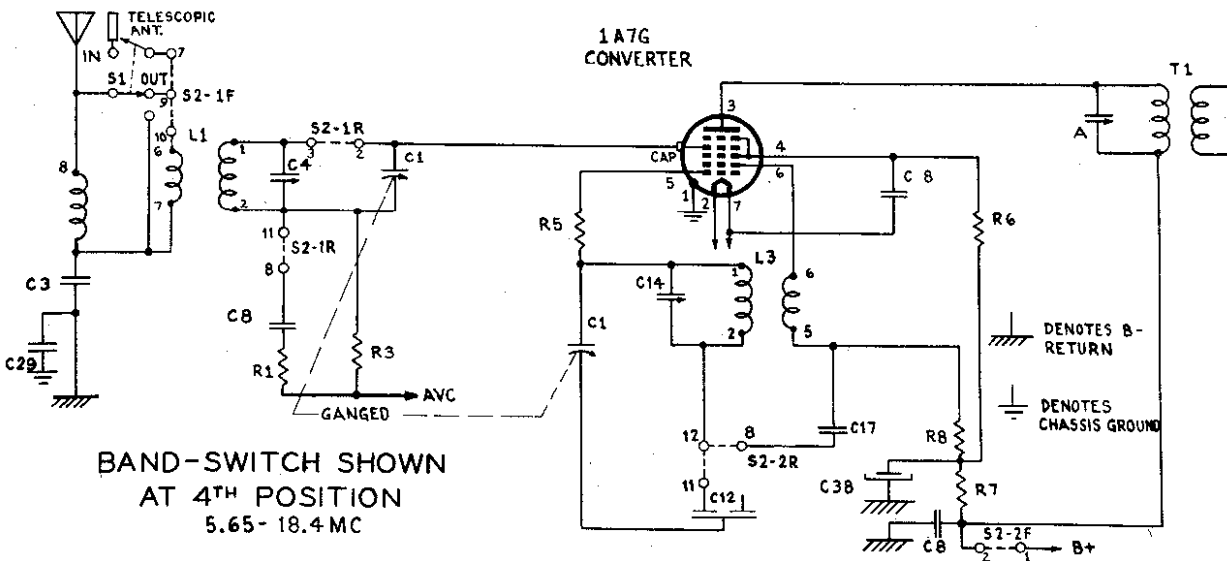
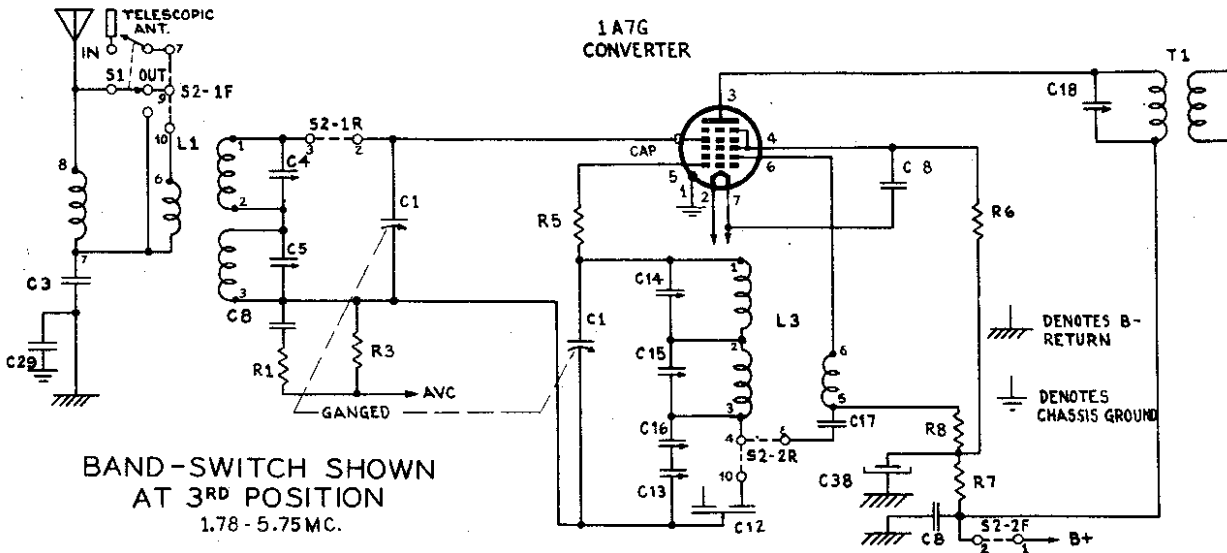
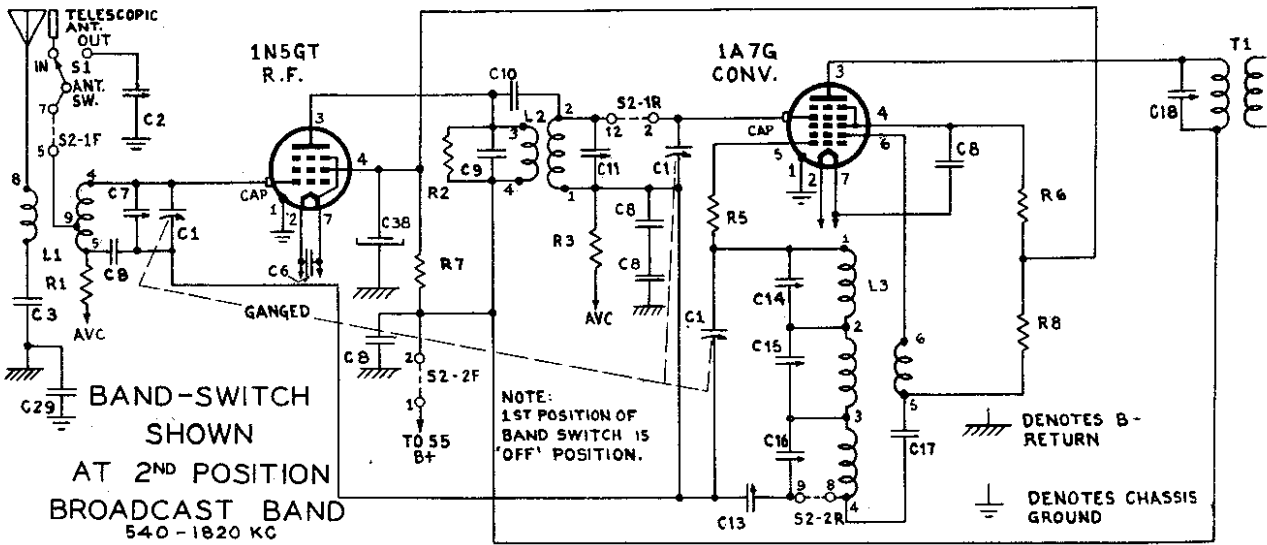
117V A.C.-D.C. 20 WATTS

CHANGEOVER SWITCH S5 SHOWN IN POSITION FOR A.C. OPERATION.

SOCKET END VIEW OF BATTERY RECEPTACLE

BATTERY PACK NO. Z-864

"clarified schematics"

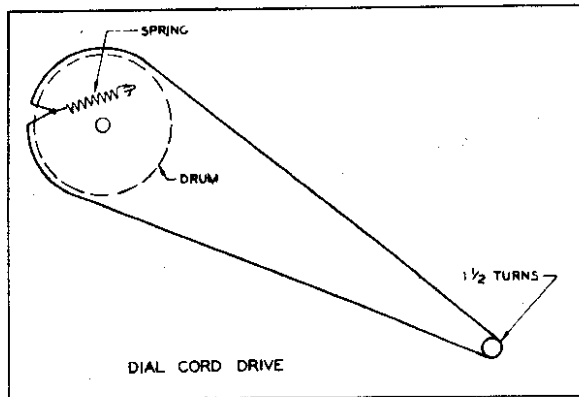


ZENITH RADIO CORP.

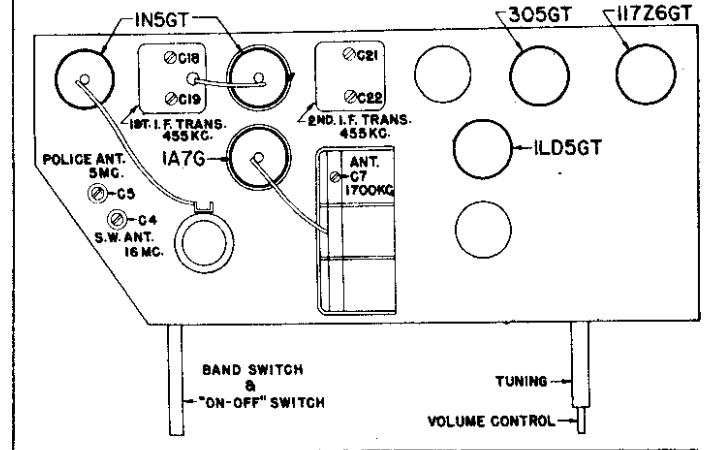
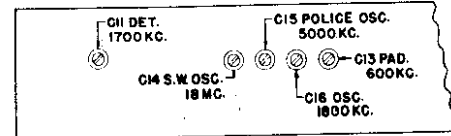
MODEL 6G038

ALIGNMENT PROCEDURE

Table with 7 columns: OPERATION, CONNECT OSCILLATOR TO, DUMMY ANTENNA, INPUT SIG. FREQUENCY, SET DIAL AT, TRIMMERS, PURPOSE. It lists 8 steps for aligning the radio, including setting the converter grid, adjusting oscillators to scale, and setting the rock gang.



DIAL CABLE DRAWING



TUBE TRIMMER LOCATION

Table with 4 columns: PART NO., REF. NO., DESCRIPTION, PRICE. It is a comprehensive parts list for the radio, categorized into sections like COILS & CHOKES, CONDENSERS, RESISTORS, and MISCELLANEOUS.

Table with 4 columns: PART NO., REF. NO., DESCRIPTION, PRICE. This section lists the prices for various tube trimmer locations and other components, including Radiogon Escutcheon & Knob Assemblies, knobs, and various screws and washers.

©John F. Rider