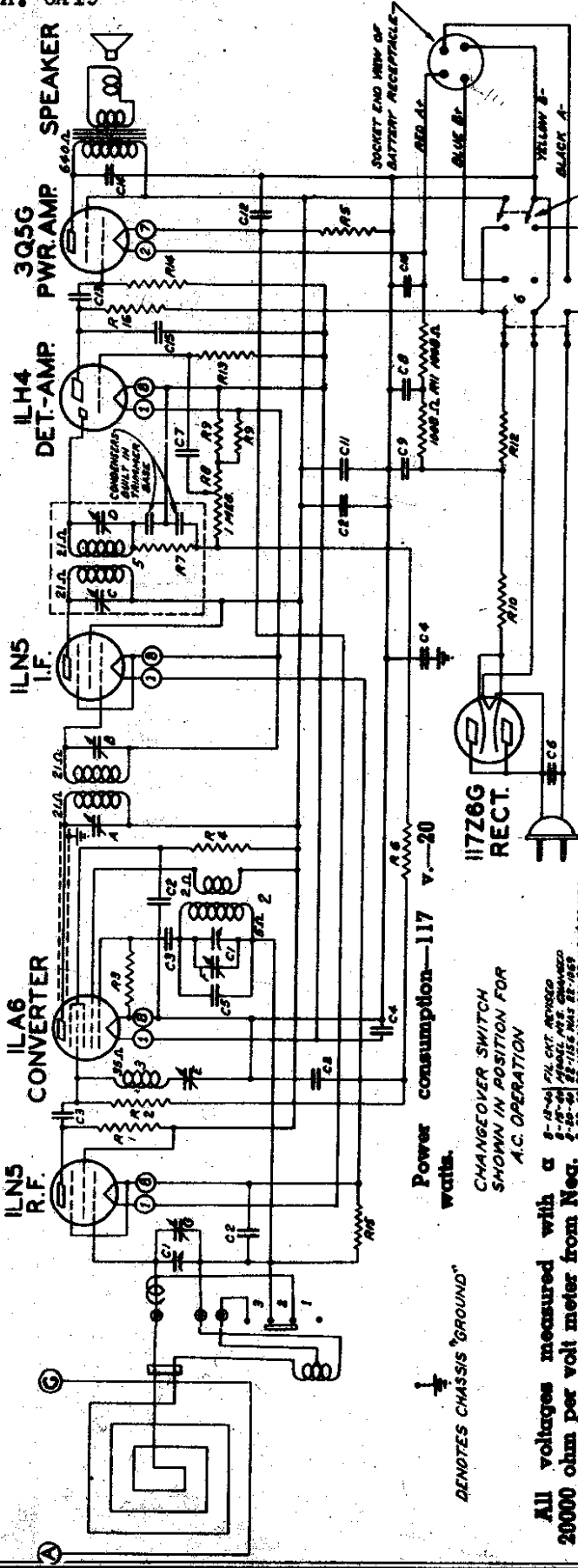


MODELS 6G501F, 6G501M,
6G501L, 6G505,
Ch. 6A19

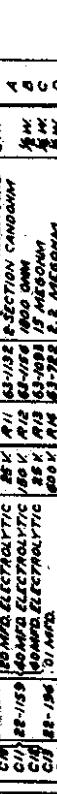
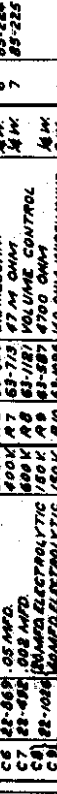
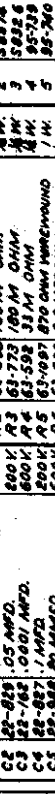
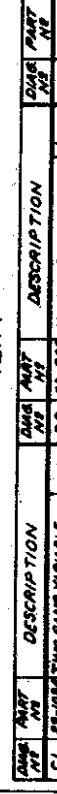
ZENITH RADIO CORP.



Power consumption—117 v.-20 watts.

CHANGEOVER SWITCH FOR A.C. OPERATION

All voltages measured with a 20000 ohm per volt meter from Neg. B to socket contact indicated.



Stage Gains:
 Ant. to R.F. grid—5 × at 1000 Kc.
 R.F. grid to conv. grid—6.5 × at 1000 Kc.
 Conv. grid to I.F. grid—49.1 × at 455 Kc.
 Overall audio—322 × at .05 watt, 400 cycles.
 Tuning Range—540 Kc. to 1570 Kc.

ALIGNMENT

I.F. ALIGNMENT CONVENTIONAL
 SEE SPECIAL SECTION VOL. VIII
 WAVETRAP (E)
 ADJUST FOR MINIMUM RESPONSE
 FEEDING 455 KC SIGNAL TO
 MIXER GRID
 TRIM OSC-ANT AT 1400 KC
 110V.A.C.-D.C.-BATTERY PACK
 UNIVERSAL PORTABLE
 I.F. FREQUENCY 455KC.

AMP. PART NO.	DESCRIPTION	OHMS	WATT	DESCRIPTION	OHMS	PART NO.	DESCRIPTION
R1	63-550 15M OHM	15M		WAVELENGTH-ASSEM.		S8894	WAVELENGTH-ASSEM.
C1	25-1000 1000 PFD.	1000				S8874	OSCILLATOR ASSEMBLY
C2	25-250 250 PFD.	250				S8875	WAVE TRAP ASSEMBLY
C3	25-162 162 PFD.	162				S8876	I.F. TRANSFORMER
C4	25-807 807 PFD.	807				S8877	I.F. TRANSFORMER
C5	25-369 369 PFD.	369				S8878	CONVERTER SWITCH
C6	25-264 264 PFD.	264				S8879	WAVELENGTH SWITCH
C7	25-492 492 PFD.	492				S8880	WAVELENGTH SWITCH
C8	25-100 100 PFD.	100					
C9	25-159 159 PFD.	159					
C10	25-186 186 PFD.	186					
C11	25-186 186 PFD.	186					
C12	25-186 186 PFD.	186					
C13	25-186 186 PFD.	186					
C14	25-186 186 PFD.	186					
C15	25-186 186 PFD.	186					
C16	25-186 186 PFD.	186					
R1	63-550 15M OHM	15M					
R2	63-550 15M OHM	15M					
R3	63-550 15M OHM	15M					
R4	63-550 15M OHM	15M					
R5	63-550 15M OHM	15M					
R6	63-550 15M OHM	15M					
R7	63-550 15M OHM	15M					
R8	63-550 15M OHM	15M					
R9	63-550 15M OHM	15M					
R10	63-550 15M OHM	15M					
R11	63-550 15M OHM	15M					
R12	63-550 15M OHM	15M					
R13	63-550 15M OHM	15M					
R14	63-550 15M OHM	15M					
R15	63-550 15M OHM	15M					
R16	63-550 15M OHM	15M					