

MODEL 6MH089,
DB47 HUDSON

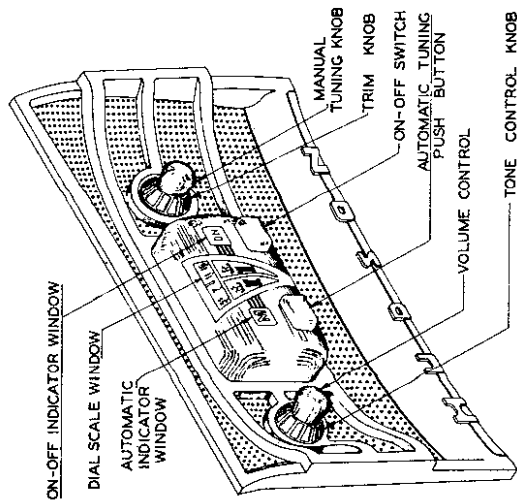
ZENITH RADIO CORP.

Automatic Tuning

There are five automatic tuning positions which may be adjusted to five desired stations. If these positions have not been previously adjusted proceed as follows:

1. Press the automatic tuning push button (on the left side) until Number 1 appears in the automatic indicator window.
2. Pull the manual tuning knob OUTWARD to engage the automatic mechanism.
3. Select the station desired and tune to its frequency by turning the tuning knob. Tune very carefully for clearest reception.

CAUTION: DO NOT ATTEMPT TO FORCE THE KNOB IN. The knob will automatically return to the "IN" position when the automatic tuning push button or the foot switch is operated.

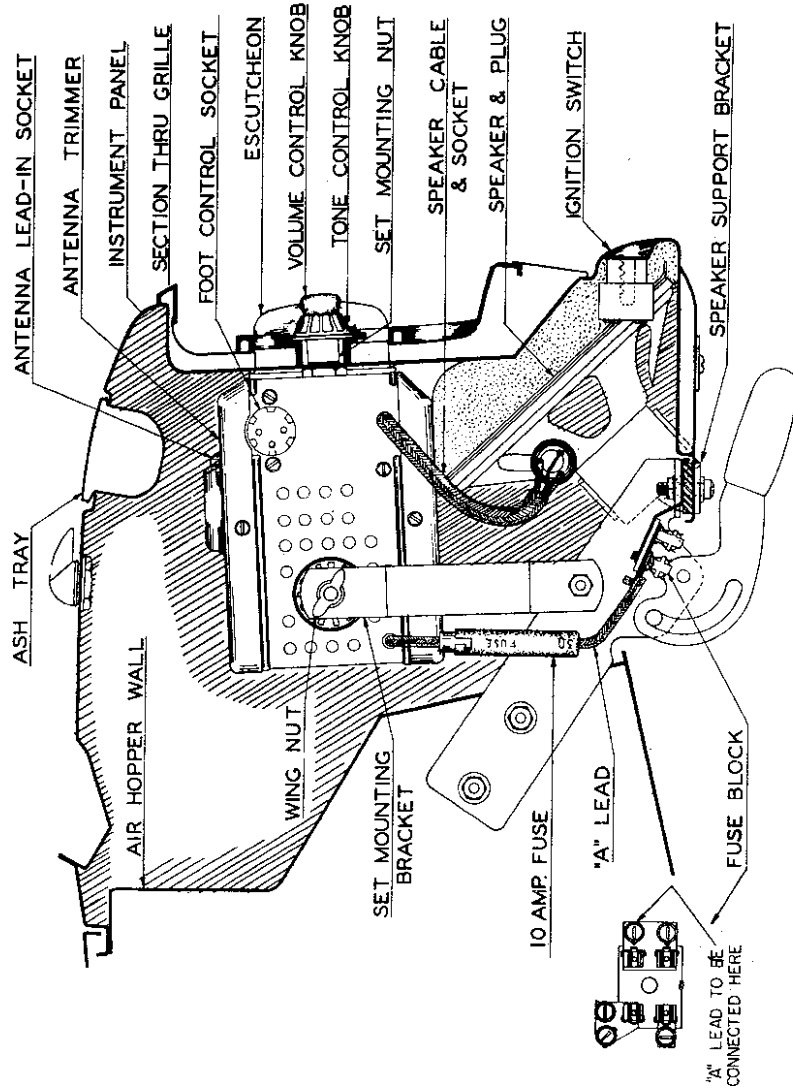


Operating Controls.

4. Press the automatic tuning push button, pull manual tuning knob outward, and tune in station desired for No. 2 position. Use the same procedure for positions No. 3, 4 and 5.

When the five automatic positions have been adjusted to the five desired stations as instructed, it is only necessary to press the AUTOMATIC button to return to MANUAL tuning, or to any one of the stations selected on the Automatic.

INSTALLATION INSTRUCTIONS



Mounting Details and Connections